

# TAMCO



## RESIDENTIAL PRODUCT GUIDE

---

Get lighting solutions from Tamlite Lighting & Fusion Lamps. Addvent has a range of bath fans & door chimes. RPP & Centaur provide electrical solutions for your home, and F4P has all the tools and chemicals you need.

**TAMLITE**  
LIGHTING

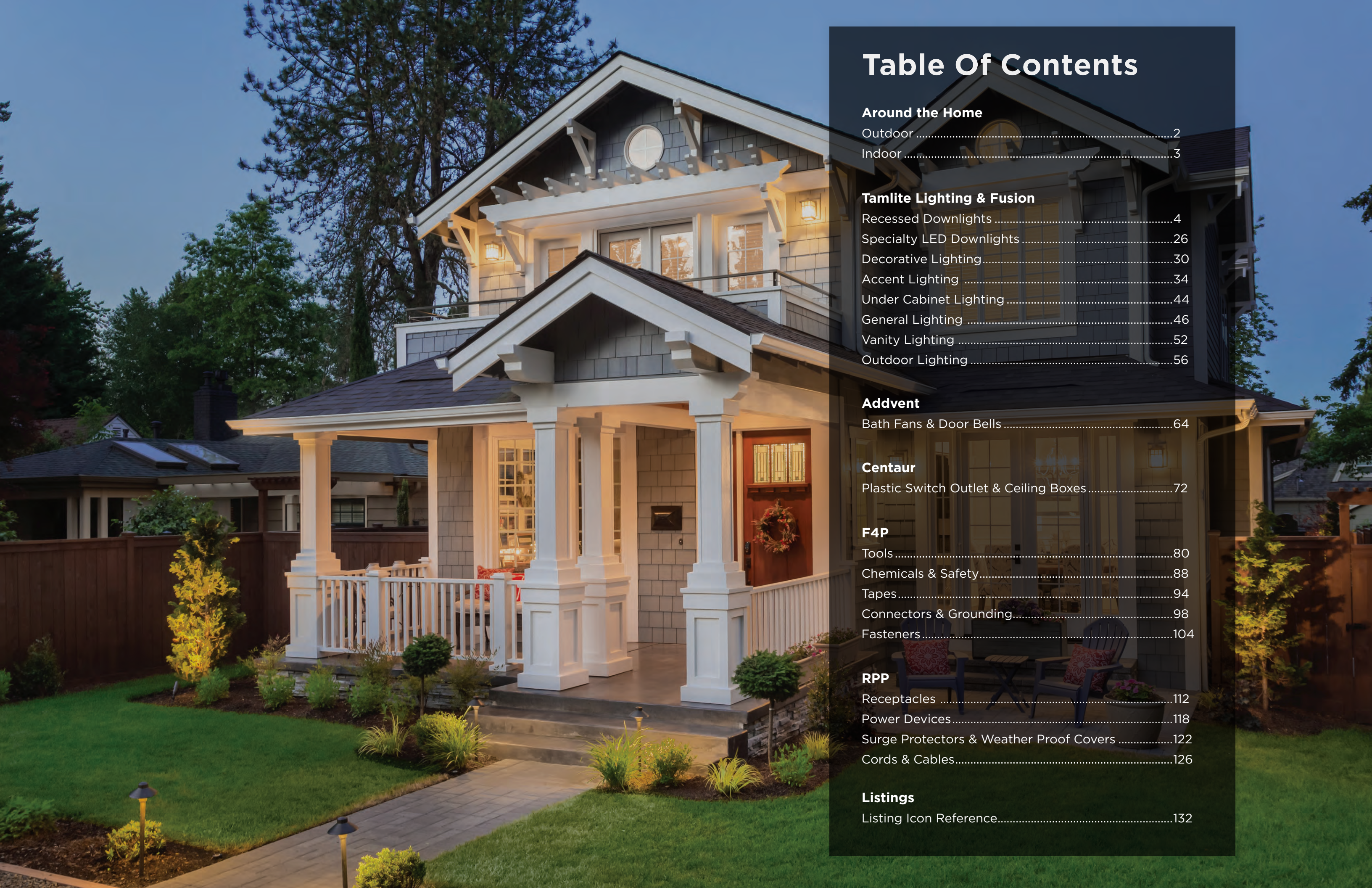
**FUSION**  
LAMPS

**ADDVENT**

 **CENTAUR**  
ELECTRICAL INSTALLATION

**F4P**  
FIRST FOR PERFORMANCE

**RPP**



# Table Of Contents

## Around the Home

Outdoor .....	2
Indoor .....	3

## TamLite Lighting & Fusion

Recessed Downlights .....	4
Specialty LED Downlights .....	26
Decorative Lighting .....	30
Accent Lighting .....	34
Under Cabinet Lighting .....	44
General Lighting .....	46
Vanity Lighting .....	52
Outdoor Lighting .....	56

## Addvent

Bath Fans & Door Bells .....	64
------------------------------	----

## Centaur

Plastic Switch Outlet & Ceiling Boxes .....	72
---	----

## F4P

Tools .....	80
Chemicals & Safety .....	88
Tapes .....	94
Connectors & Grounding .....	98
Fasteners .....	104

## RPP

Receptacles .....	112
Power Devices .....	118
Surge Protectors & Weather Proof Covers .....	122
Cords & Cables .....	126

## Listings

Listing Icon Reference .....	132
------------------------------	-----



## Around the home

These spaces illustrate where certain products can be implemented into your residential space, indoors and out.



### Outdoor

**TAMLITE LIGHTING**

A. Flood Lighting



**ADDVENT**

C. Door Chimes



**RPP**

E. Weatherproof Covers



**FUSION LAMPS**

B. Light Bulbs



**F4P**  
FIRST FOR PERFORMANCE

D. General Purpose Foam Sealant



### Indoor

**TAMLITE LIGHTING**

A. Recessed Lighting



**CENTAUR ELECTRICAL INSTALLATION**

C. Outlet Boxes



**FUSION LAMPS**

B. Light Bulbs



**F4P**  
FIRST FOR PERFORMANCE

D. Clear Silicone



**RPP**

E. Receptacles



# Residential Downlight

Suggested Products:

**A: ADPSBK** paired with  
**FLEDF7.5A19827C** (see page 30, 31)

**B: CLY4-5CCTA Series** (see page 6)

**TAMLITE** LIGHTING **FUSION** LAMPS



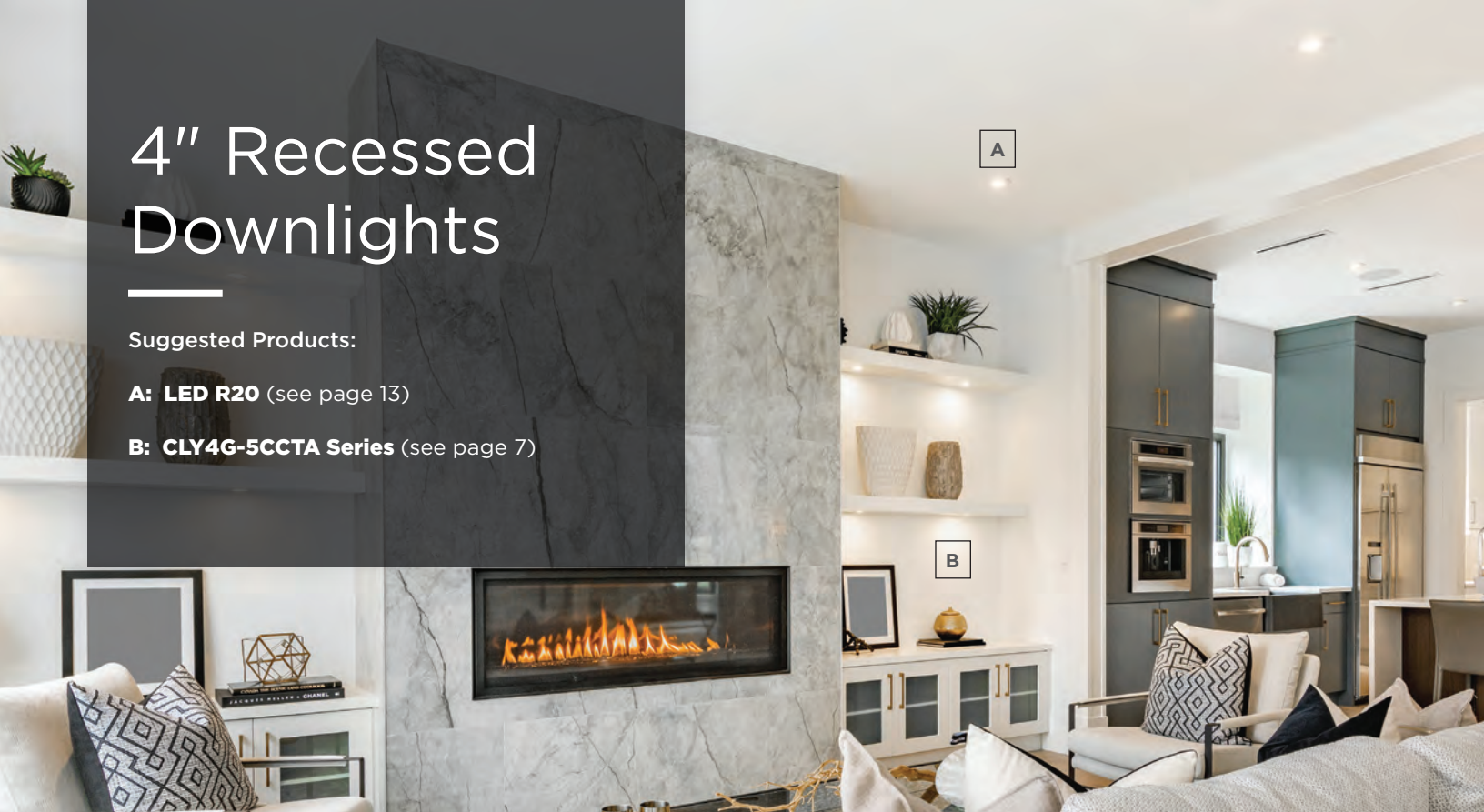
Downlighting is designed to blend into the architecture, creating light without a visible light source. This creates even illumination in a space without creating unnecessary glare.

# 4" Recessed Downlights

Suggested Products:

A: LED R20 (see page 13)

B: CLY4G-5CCTA Series (see page 7)



## CLY4-5CCTA/WH Series

The CLY series recessed LED panel light provides the most versatile, high-quality option for retrofit and new work applications.



EXAMPLE: CLY4-5CCTA/WH

SERIES	DESCRIPTION	CCT SELECTABLE	COLOR
CLY4-5CCTA/WH	4" LED PANEL LIGHT	27K/30K/35K/40K/50K	[ /WH ] : WHITE



## CLY4B-5CCTA/WH Series

The CLY series recessed LED panel light provides a highly versatile, high-quality option for retrofit and new work applications.



EXAMPLE: CLY4B-5CCTA/WH

SERIES	DESCRIPTION	CCT SELECTABLE	COLOR
CLY4B-5CCTA/WH	4" LED PANEL LIGHT, BAFFLE	27K/30K/35K/40K/50K	[ /WH ] : WHITE



## 4" RECESSED DOWNLIGHTS

TAMLITE LIGHTING

### CLY4G-5CCTA/WH Series

The CLY series recessed LED panel light provides a highly versatile, high-quality option for retrofit and new work applications.



EXAMPLE: CLY4G-5CCTA/WH

SERIES	DESCRIPTION	CCT SELECTABLE	COLOR
CLY4G-5CCTA/WH	GIMBAL LOW PROFILE LED DOWNLIGHT	27K/30K/35K/40K/50K	[ /WH ] : WHITE

### CLY4-CCTA Series

The 4" CLY series features an ultra low-profile design at a value contractors need. The detachable junction box allows for more freedom of installation during remodels and new construction.



EXAMPLE: CLY4-CCTA/WH

SERIES	SIZE	COLOR TEMP	COLOR
CLY	[ 4 ] : 4"	[ -CCTA ] : 3000K/4000K/5000K	[ /WH ] : WHITE

### CLY4B-CCTA Series

The 4" CLY baffle series features an ultra low-profile design at a value contractors need. The detachable junction box allows for more freedom of installation during remodels and new construction.



EXAMPLE: CLY4B-CCTA/WH

SERIES	SIZE	TYPE	COLOR TEMP	COLOR
CLY	[ 4 ] : 4"	[ B ] : BAFFLE	[ -CCTA ] : 3000K/4000K/5000K	[ /WH ] : WHITE



# 4" Recessed Downlights

Suggested Products:

**A: IC104AT Series** (see page 10)

**B: FLED4B10MED827C** (see page 33)

## 4" RECESSED DOWNLIGHTS



### CLY4 Series

The 4" CLY series features an ultra low-profile design at a value contractors need. The detachable junction box allows for more freedom of installation during remodels and new construction. Single color temperature.



EXAMPLE: CLY4-27K/WH

SERIES	SIZE	COLOR TEMP	COLOR
CLY	[ 4 ] : 4"	[ -27K ] : 80CRI 2700K [ -30K ] : 80CRI 3000K [ -40K ] : 80CRI 4000K [ -50K ] : 80CRI 5000K	[ /WH ] : WHITE [ /BK ] : BLACK [ /SN ] : SATIN [ /MO ] : MOCHA

### CLY4G Series

The 4" CLY gimbal series features an ultra low-profile design at a value contractors need. The detachable junction box allows for more freedom of installation during remodels and new construction. Single color temperature.



EXAMPLE: CLY4G-30K/WH

SERIES	SIZE	TYPE	COLOR TEMP	COLOR
CLY	[ 4 ] : 4"	[ G ] : GIMBAL	[ -30K ] : 80CRI 3000K [ -40K ] : 80CRI 4000K	[ /WH ] : WHITE [ /BK ] : BLACK

### TRR4RF-5CCTA Series

These LED Retrofit Kits are compatible with most 4" recessed cans. TRR4RF-CCTA is designed with a white baffle construction and comes with a dimmable LED driver. Three tension fin clips provided for installation. Suitable for IC and Non-IC housings.



EXAMPLE: TRR4RF-5CCTA

SERIES	DESCRIPTION	CCT SELECTABLE	COLOR
TRR4RF-5CCTA	4" LED RETROFIT	27K/30K/35K/40K/50K	WHITE

**ICRF Series**

The ICRF series LED Retrofit Kits are ideal for retrofits due to their fan clips allowing for easy installation. Single color temperature.

**Available in:**

- 4" or 5-6" varieties.
- 2700, 3000K, 4000K, and 5000K color temperatures.



**DRFG Series**

The DRFG series LED Gimbal Retrofit Kits fit into most housings for quick and easy retrofits with their E26 medium screw-base. Single color temperature.

**Available in:**

- 4" or 5-6" varieties.
- 3000K, 4000K color temperatures.
- White finish



**IC104AT Series**

The 4" IC-rated Airtight New Work Housing use 120V line voltage and is compatible with 50W R/PAR20 lamps.

**Configuration :**

4" Airtight New Work



**IC104RAT Series**

The 4" IC-rated Airtight Remodel Housing uses 120V line voltage and is compatible with 50W R/PAR20 and A19 lamps.

**Configuration :**

4" Airtight Remodel



**ROUGH4-HB Series**

The 4" rough-in plates are ideal for easier layout planning and new construction pre-wiring. It is made of durable steel (0.19) and fits up to 24" spaced studs. The ROUGH-HB Series Rough-In Plates come with hanger bars that include double-headed nails and holding screws for easy installation. Allows for CLY series driver mounting.



**ROUGH-HB Series**

The all-in-one 3", 4", and 6" rough-in plates are ideal for easier layout planning and new construction pre-wiring. It is made of durable steel (0.19) and fits up to 24" spaced studs. Rough-in plates come with double-headed nails and holding screws. Allows for CLY series driver mounting.



**ROUGH4 Series**

The 4" rough-in plates are ideal for easier layout planning and new construction pre-wiring. It is made of durable sheet metal (0.19), is 2' long, and fits up to 24" spaced studs. Our rough-in plate is powder coated to dull the edges, reducing the risk of getting cut or injured during the installation.



**ROUGH4-NP Series**

The 4" rough-in plates are ideal for easier layout planning and new construction pre-wiring. It is made of durable sheet metal (0.19), is 2' long, and fits up to 24" spaced studs.



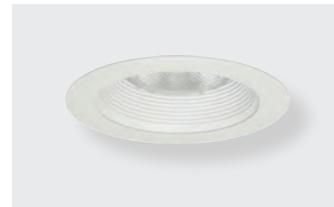
## AVAILABLE TRIMS



### TM4A Series

4" Full Cone Baffle Trims. Compatible with BR/PAR20 lamps.

Available in (Baffle/Ring): **BK/BK, WH/WH, SN/SN, BK/WH, MO/MO**



### TM24B-WH/WP Series

White Plastic Baffle/Ring. Compatible with BR/PAR20 lamps.

Available in (Baffle/Ring): **WH**



### TM445 Series

4" Square Gimbal Trims. Compatible with BR/PAR20 lamps.

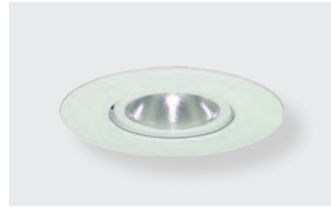
Available in: **WH, SN, BK, MO**



### TM24C Series

Reflector Trim.

Available in (Reflector/Ring): **BK/WH, CL/WH, WH/WH, BK/SN, GD/WH**



### TM28 Series

4" Adjustable Gimbal Trims. Compatible with BR/PAR20 lamps.

Available in: **WH, SN, MO**



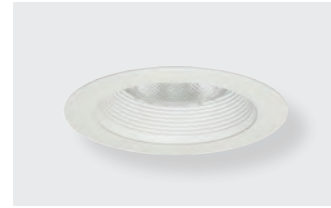
### CLY-LEDTRIM Series

\*Snap-on trim for CLY4 fixtures.

Available in: **SN, BK, MO**



\*CLY-LEDTRIM is not compatible with baffle or gimbal panel lights.



### TM24B Series

4" Baffle Trims. Compatible with BR/PAR20 lamps.

Available in: **BK/BK, WH/WH, SN/SN, BK/WH, MO/MO, BK/SN**



### LEDTRIM Series

Specifically designed for the ICRF and ICIJ series.

Available in: **SN, BK, MO**



**BK:** Black | **WH:** White | **SN:** Satin Nickel | **MO:** Mocha | **BR:** Bronze | **CL:** Clear Reflector | **GD:** GOLD

## EXTENSION CABLES



### CLY-CCTA Cable

**CLY-CCTA-EXT-20**  
20FT extension cord for CLY CCTA  
**STOCK #** 0542-2791

### CLY Cable

**CLY-EXT-20**  
20FT extension cord for CLY  
**STOCK #** 0542-2563



## RECOMMENDED LED LAMPS



FLED lamps are designed to perform and offer incredibly long life, high efficacy, and easy integration within your existing lighting fixtures.

### LED R20

**FLED7.5R20827**  
7.5W | R20 | DIM 827  
**STOCK #** 0446-0649

**FLED7.5R20830**  
7.5W | R20 | DIM 830  
**STOCK #** 0446-0652

**FLED7.5R20840**  
7.5W | R20 | DIM 840  
**STOCK #** 0446-0655

**FLED7.5R20850**  
7.5W | R20 | DIM 850  
**STOCK #** 0446-0658



**Available in:**  
2700K, 3000K, 4000K, and 5000K color temperatures.





# 5" Recessed Downlights

## Suggested Products:

### A: LED Ribbon Tapes

Available in: Cool White / Warm White / Cool & Warm White Multi-Color RGB & Multi-Color Chase Tape (see page 38)

### B: TRR56RF-5CCTA (see page 14)



## TRR56RF-5CCTA Series

These LED Retrofit Kits are compatible with most 5" and 6" recessed cans. The TRR56RF-5CCTA is designed with a white baffle construction and comes with a dimmable LED driver. Two torsion clips provided for installation. Suitable for IC and Non-IC housings.



EXAMPLE: TRR56RF-5CCTA

SERIES	DESCRIPTION	CCT SELECTABLE	FINISH
TRR56RF-5CCTA	5"/6" LED RETROFIT	27K/30K/35K/40K/50K	WHITE

## ICRF Series

The ICRF series LED Retrofit Kits are ideal for retrofits due to their fan clip allowing for easy installation. Single color.

### Available in:

- 4" or 5-6" varieties.
- 2700, 3000K, 4000K, and 5000K color temperatures.



## DRFG Series

The DRFG series LED Gimbal Retrofit Kits fit into most housings for quick and easy retrofits with their E26 medium screw-base. Single color.

### Available in:

- 4" or 5-6" varieties.
- 3000K, 4000K color temperatures.
- White finish



## 5" RECESSED DOWNLIGHTS



### IC205AT Series

The 5" IC-rated Airtight New Work Housing uses 120V line voltage and is compatible with 75W R/PAR30, 60W A19 lamps.

**Configuration :**  
5" Airtight New Work



### IC205RAT Series

The 5" IC-rated Airtight Remodel Housing uses 120V line voltage and is compatible with 75W R/PAR30, 60W A19 lamps.

**Configuration :**  
5" Airtight Remodel



## AVAILABLE TRIMS



### TM5A Series

5" Airtight Cone Baffle (Self Flanged). Compatible with BR/PAR30 lamps.

Available in (Baffle/Ring)  
**WH/WR, BK/WR, BK/BK, MO/MO, SN/SN**



### TM55B Series

5" Baffle Trims. Compatible with BR/PAR30 bulbs.

Available in (Baffle/Ring)  
**WH/WH, BK/BK, BK/SN, BK/WH**



### TM58 Series

5" Adjustable Flush Gimbals. Compatible with BR/PAR30 lamps.

Available in  
**WH, SN, MO**



### TM57 Series

5" Albalite Glass Shower Trim. Compatible with BR/PAR30 bulbs.

Available in (Reflector/Ring)  
**WH/WH**



### LEDTRIM Series

Specifically designed for the ICRF and ICIJ series.

Available in:  
**SN, BK, MO**



**BK:** Black | **WH:** White | **WR:** White Ring | **SN:** Satin Nickel | **MO:** Mocha | **BR:** Bronze | **CL:** Clear Reflector



## 5" Recessed Downlights

Suggested Products:

**A:** IC205RAT Series (see page 15)

**B:** LED A19 (see page 17)

## RECOMMENDED LED LAMPS



FLED lamps are designed to perform and offer incredibly long life, high efficacy, and easy integration within your existing lighting fixtures.

### LED BR30

**FL8.5BR3027**  
8.5W | BR30 | DIM 827  
**STOCK #** 0582-7413

**FL8.5BR3030**  
8.5W | BR30 | DIM 830  
**STOCK #** 0582-7416

**FL8.5BR3040**  
8.5W | BR30 | DIM 840  
**STOCK #** 0582-7419

**FL8.5BR3050**  
8.5W | BR30 | DIM 850  
**STOCK #** 0582-7422



### LED BR40

**FL15BR4027**  
15W | BR40 | DIM 827  
**STOCK #** 0583-8090

**FL15BR4030**  
15W | BR40 | DIM 830  
**STOCK #** 0583-8093

**FL15BR4040**  
15W | BR40 | DIM 840  
**STOCK #** 0583-8096

**FL15BR4050**  
15W | BR40 | DIM 850  
**STOCK #** 0583-8099



### LED A19

**FL9A19827**  
9W | A19 | DIM 827  
**STOCK #** 0582-4455

**FL9A19830**  
9W | A19 | DIM 830  
**STOCK #** 0582-4458

**FL9A19840**  
9W | A19 | DIM 840  
**STOCK #** 0582-4464

**FL9A19850**  
9W | A19 | DIM 850  
**STOCK #** 0582-4467



#### Available in:

2700K, 3000K, 4000K, and 5000K color temperatures.

# 6" Recessed Downlights

Suggested Products:

**A: CLY6-5CCTA/WH** (see page 18)

**B: LED BR30** (see page 25)



## CLY6-5CCTA/WH Series

The CLY series recessed LED panel light provides the most versatile, high-quality option for retrofit and new work applications.



EXAMPLE: CLY6-5CCTA/WH

SERIES	DESCRIPTION	CCT SELECTABLE	COLOR
CLY6-5CCTA/WH	6" LED PANEL LIGHT	27K/30K/35K/40K/50K	[ /WH ] : WHITE

## CLY6B-5CCTA/WH Series

The CLY series recessed LED panel light provides a highly versatile, high-quality option for retrofit and new work applications.



EXAMPLE: CLY6B-5CCTA/WH

SERIES	DESCRIPTION	CCT SELECTABLE	COLOR
CLY6B-5CCTA/WH	6" LED PANEL LIGHT BAFFLE	27K/30K/35K/40K/50K	[ /WH ] : WHITE

## 6" RECESSED DOWNLIGHTS



### CLY6G-5CCTA/WH Series

The CLY series recessed LED panel light provides a highly versatile, high-quality option for retrofit and new work applications.



EXAMPLE: CLY6G-5CCTA/WH

SERIES	DESCRIPTION	CCT SELECTABLE	COLOR
CLY6G-5CCTA/WH	GIMBAL LOW PROFILE LED DOWN LIGHT	27K/30K/35K/40K/50K	[ /WH ] : WHITE

### CLY6-CCTA Series

The 6" CLY series features an ultra low-profile design at a value contractors need. The detachable junction box allows for more freedom of installation during remodels and new construction.



EXAMPLE: CLY6-CCTA/WH

SERIES	SIZE	COLOR TEMP	COLOR
CLY	[ 6 ] : 6"	[ -CCTA ] : 3000K/4000K/5000K	[ /WH ] : WHITE



# 6" Recessed Downlights

Suggested Products:

**A:** IC206ATQ Series (see page 22)

**B:** FLEDF4B10CAND827C (see page 33)

## 6" RECESSED DOWNLIGHTS

### CLY6B-CCTA Series

The 6" CLY baffle series features an ultra low-profile design at a value contractors need. The detachable junction box allows for more freedom of installation during remodels and new construction.



EXAMPLE: CLY6B-CCTA/WH

SERIES	SIZE	TYPE	COLOR TEMP	COLOR
CLY	[ 6 ] : 6"	[ B ] : BAFFLE	[ -CCTA ] : 3000K/4000K/5000K	[ /WH ] : WHITE

### CLY6G-CCTA Series

The 6" CLY gimbal series features an ultra low-profile design at a value contractors need. The detachable junction box allows for more freedom of installation during remodels and new construction.



EXAMPLE: CLY6G-CCTA/WH

SERIES	SIZE	TYPE	COLOR TEMP	COLOR
CLY	[ 6 ] : 6"	[ G ] : GIMBAL	[ -CCTA ] : 3000K/4000K/5000K	[ /WH ] : WHITE

### CLY6 Series

The 6" CLY series features an ultra low-profile design at a value contractors need. The detachable junction box allows for more freedom of installation during remodels and new construction. Single color temperature.



EXAMPLE: CLY6-27/WH

SERIES	SIZE	COLOR TEMP	COLOR
CLY	[ 6 ] : 6"	[ -27 ] : 80CRI 2700K [ -30 ] : 80CRI 3000K [ -40 ] : 80CRI 4000K [ -50 ] : 80CRI 5000K	[ /WH ] : WHITE [ /BK ] : BLACK [ /SN ] : SATIN [ /MO ] : MOCHA

### ICRF Series

The ICRF series LED Retrofit Kits are ideal for retrofits because their fan clips allow for easy installation.

Available in:

- 4" or 5-6" varieties.
- 2700, 3000K, 4000K, and 5000K color temperatures.



### DRFG Series

The DRFG series LED Gimbal Retrofit Kits fit into most housings for quick and easy retrofits with their E26 medium screw-base.

Available in:

- 4" or 5-6" varieties.
- 3000K, 4000K color temperatures.
- White finish



## 6" RECESSED DOWNLIGHTS



### TRR56RF-5CCTA

These LED Retrofit Kits are compatible with most 5" and 6" recessed cans. The TRR56RF-5CCTA is designed with a white baffle construction and comes with a dimmable LED driver. Two torsion clips provided for installation. Suitable for IC and Non-IC housings.



EXAMPLE: TRR56RF-5CCTA

SERIES	DESCRIPTION	CCT SELECTABLE	FINISH
TRR56RF-5CCTA	5"/6" LED RETROFIT	27K/30K/35K/40K/50K	WHITE

### JBD6-CS Series

JBD6-CS is a color-selectable, most versatile LED surface mount disk light made for mounting to electrical junction boxes.



EXAMPLE: JBD6-CS

SERIES	SIZE	COLOR TEMP
JBD	[ 6 ] : 6"	[ CS ] : 27K/30K/35K/40K/50K

## 6" RECESSED DOWNLIGHTS



### ICL6ATQ Series

The 6" IC-rated Airtight LED Quick Connect New Work Housing uses 120/277V AC.



Faster installation/for use with TRR56RF.

### ICL6RATQ Series

6" IC Air-Tight Remodel Housing - LED Quick Connector for LED Retrofits using 120/277v applications.



## 6" RECESSED DOWNLIGHTS



### IC206ATQF Series

The 6" Floating Socket IC-rated Airtight New Work Housing uses 120V line voltage and is compatible with 90W BR40, 75W R/PAR30, 60W A19 lamps.



### IC206ATQ Series

The 6" IC-rated Airtight New Work Housing uses 120V line voltage and is compatible with 90W BR40, 75W R/PAR30 lamps, 60W A19 lamps.



### IC206RAT Series

The 6" IC-rated Airtight Remodel Housing uses 120V line voltage and is compatible with 75W A19 lamps.



## ROUGH-IN PLATES



### ROUGH-HB Series

The 3", 4", and 6" all-in-one rough-in plates are ideal for easier layout planning and new construction pre-wiring. It is made of durable steel (0.19) and fits up to 24" spaced studs. Rough-in plates come with double-headed nails and holding screws. Allows CLY series driver mounting.



### ROUGH6-HB Series

The 6" rough-in plates are ideal for easier layout planning and new construction pre-wiring. It is made of durable steel (0.19) and fits up to 24" spaced studs. The ROUGH-HB Series Rough-In Plates come with hanger bars that include double-headed nails and holding screws for easy installation. Allows CLY series driver mounting.



### ROUGH6 Series

The 6" rough-in plates are ideal for easier layout planning and new construction pre-wiring. It is made of durable sheet metal (0.19), is 2' long, and fits up to 24" spaced studs. Our rough-in plate is powder coated to dull the edges, reducing the risk of getting cut or injured during the installation.

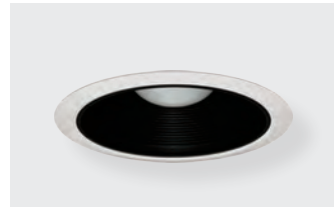


### ROUGH6-NP Series

The 6" rough-in plates are ideal for easier layout planning and new construction pre-wiring. It is made of durable sheet metal (0.19), is 2' long, and fits up to 24" spaced studs.



## AVAILABLE TRIMS



### TM102A Series

6" Airtight Cone Baffle (Self Flange/Pre-installed Gasket). Compatible with PAR30 & BR40 bulbs.

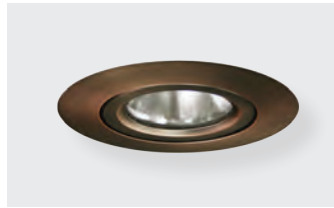
Available in (Baffle/Ring):  
**WH/WR, BK/BK, BK/WR, CL/WH, MO/MO, SN/SN**



### TM98E Series

6" Regressed White Eyeball. Compatible with BR/PAR30

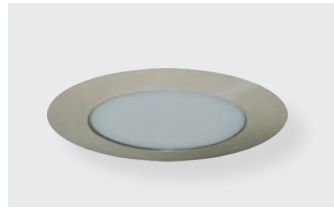
Available in (Baffle/Ring):  
**WH/WR, BK/WH**



### TM330 Series

6" Gimbal Ring. Compatible with BR40 & PAR38 bulbs.

Available in:  
**WH, SN, MO**



### TM15(P)

6" Albalite Glass Shower Trim. Compatible with A19 bulbs.

Available in:  
**WH, NR, MO, SN**



### TM4B Series

6" Baffle Trim (Metal ring on special finishes).

Available in (Baffle/Ring):  
**WH/WR, BK/WR, BK/SN, MO/MO**



### CLY-LEDTRIM Series

\*Snap-on trim for CLY4 & CLY6 fixtures.

Available in:  
**SN, BK, MO**



\*CLY-LEDTRIM is not compatible with baffle or gimbal panel lights.

### LEDTRIM Series

Specifically designed for the ICRF and ICIJ series.

Available in:  
**SN, BK, MO**



**BK:** Black | **WH:** White | **WR:** White Ring | **SN:** Satin Nickel | **MO:** Mocha | **CL:** Clear | **NR:** NO RING

## EXTENSION CABLES



### CLY-CCTA Cable

**CLY-CCTA-EXT-20**  
20FT extension cord for CLY CCTA  
**STOCK # 0542-2791**

### CLY Cable

**CLY-EXT-20**  
20FT extension cord for CLY  
**STOCK # 0542-2563**



## RECOMMENDED LED LAMPS



FLED lamps are designed to perform and offer incredibly long life, high efficacy, and easy integration within your existing lighting fixtures.

### LED BR30

**FL8.5BR3027**  
8.5W | BR30 | DIM 827  
**STOCK # 0582-7413**

**FL8.5BR3030**  
8.5W | BR30 | DIM 830  
**STOCK # 0582-7416**

**FL8.5BR3040**  
8.5W | BR30 | DIM 840  
**STOCK # 0582-7419**

**FL8.5BR3050**  
8.5W | BR30 | DIM 850  
**STOCK # 0582-7422**



### LED BR40

**FL15BR4027**  
15W | BR40 | DIM 827  
**STOCK # 0583-8090**

**FL15BR4030**  
15W | BR40 | DIM 830  
**STOCK # 0583-8093**

**FL15BR4040**  
15W | BR40 | DIM 840  
**STOCK # 0583-8096**

**FL15BR4050**  
15W | BR40 | DIM 850  
**STOCK # 0583-8099**



### LED A19

**FL9A19827**  
9W | A19 | DIM 827  
**STOCK # 0582-4455**

**FL9A19830**  
9W | A19 | DIM 830  
**STOCK # 0582-4458**

**FL9A19840**  
9W | A19 | DIM 840  
**STOCK # 0582-4464**

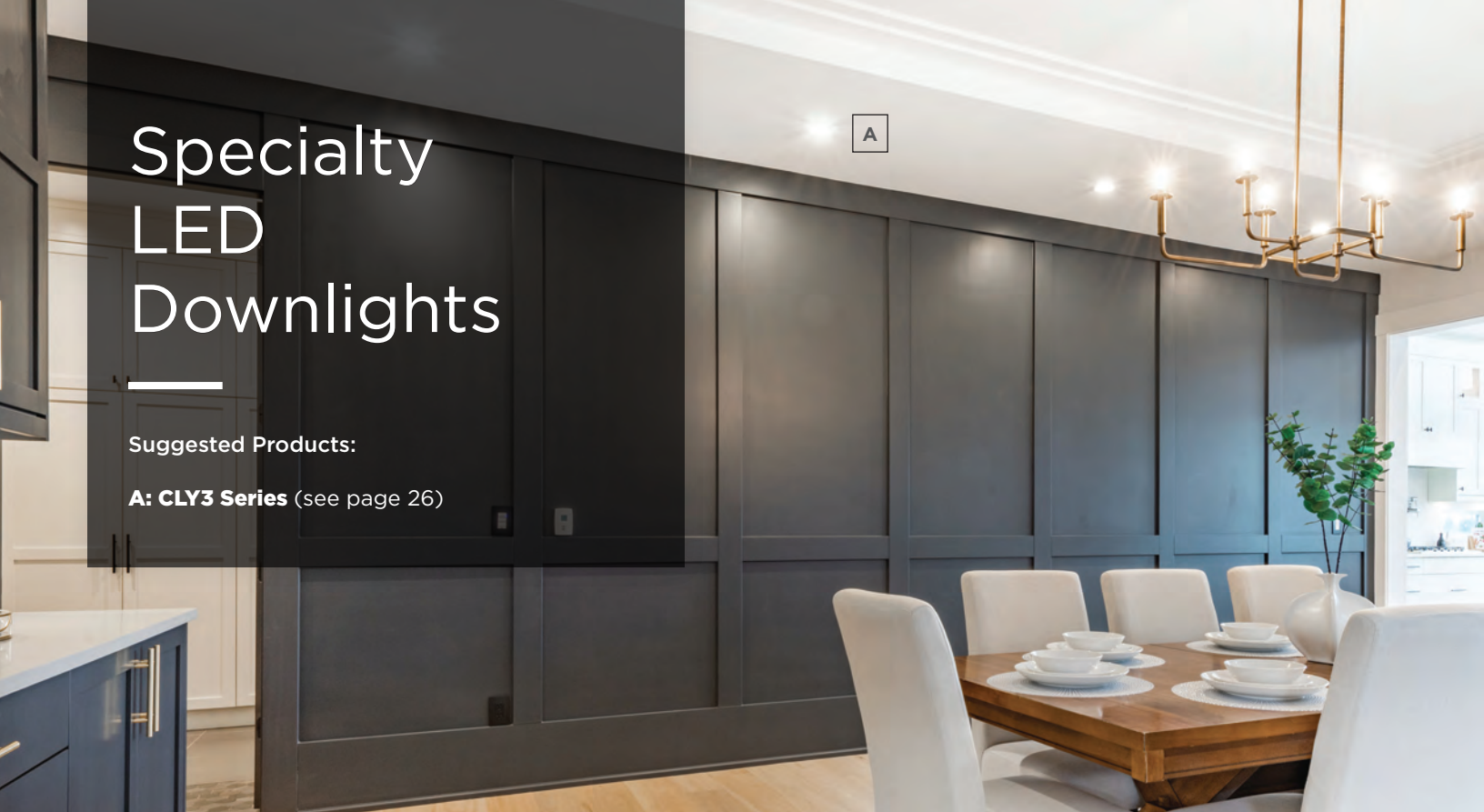
**FL9A19850**  
9W | A19 | DIM 850  
**STOCK # 0582-4467**



# Specialty LED Downlights

Suggested Products:

A: **CLY3 Series** (see page 26)



## CLY3 Series

The 3" CLY series features an ultra low-profile design at a value contractors need. The detachable junction box allows for more freedom of installation during remodels and new construction. Single color temperature.



EXAMPLE: CLY3-27K/WH

SERIES	SIZE	COLOR TEMP	COLOR
CLY	[ 3 ] : 3"	[ -27K ] : 80CRI 2700K [ -30K ] : 80CRI 3000K [ -40K ] : 80CRI 4000K [ -50K ] : 80CRI 5000K	[ /WH ] : WHITE

## SPECIALTY LED DOWNLIGHTS



## CLY3G Series

The 3" CLY gimbal series features an ultra low-profile design at a value contractors need. The detachable junction box allows for more freedom of installation during remodels and new construction. Single color temperature.



EXAMPLE: CLY3G-30K/WH

SERIES	SIZE	TYPE	COLOR TEMP	COLOR
CLY	[ 3 ] : 3"	[ G ] : GIMBAL	[ -30K ] : 80CRI 3000K [ -40K ] : 80CRI 4000K	[ /WH ] : WHITE [ /BK ] : BLACK

## CLY8-CCTA Series

The 8" CLY series features an ultra low-profile design at a value contractors need. The detachable junction box allows for more freedom of installation during remodels and new construction.



EXAMPLE: CLY8-CCTA/WH

SERIES	SIZE	COLOR TEMP	COLOR
CLY	[ 8 ] : 8"	[ -CCTA ] : 3000K/4000K/5000K	[ /WH ] : WHITE

## CLY8-5CCTA/WH Series

The 8" CLY series features an ultra low-profile design at a value contractors need. The detachable junction box allows for more freedom of installation during remodels and new construction. Single color. These fixtures are Energy Star rated.



EXAMPLE: CLY8-5CCTA/WH

SERIES	SIZE	COLOR TEMP	COLOR
CLY8-5CCTA/WH	8" LED PANEL LIGHT	2700K/3000K/3500K/4000K/5000K	[ /WH ] : WHITE

**CLY4SQB-5CCTA/WH Series**

The 4" CLY square baffle series features an ultra low-profile design at a value contractors need. The detachable junction box allows for more freedom of installation during remodels and new construction.



EXAMPLE: CLY4SQB-5CCTA/WH

SERIES	SIZE	CCT SELECTABLE	COLOR
CLY4SQB-5CCTA	4" SQUARE BAFFLE LOW PROFILE LED DOWNLIGHT	27K/30K/35K/40K/50K	[ /WH ] : WHITE

**CLY6SQB-5CCTA/WH Series**

The 6" CLY square baffle series features an ultra low-profile design at a value contractors need. The detachable junction box allows for more freedom of installation during remodels and new construction.



EXAMPLE: CLY6SQB-5CCTA/WH

SERIES	SIZE	CCT SELECTABLE	COLOR
CLY6SQB-5CCTA	6" SQUARE BAFFLE LOW PROFILE LED DOWNLIGHT	27K/30K/35K/40K/50K	[ /WH ] : WHITE

**CLY4SQ Series**

The 4" CLY square series features an ultra low-profile design at a value contractors need. The detachable junction box allows for more freedom of installation during remodels and new construction.



EXAMPLE: CLY4SQ-30K/WH

SERIES	SIZE	TYPE	COLOR TEMP	COLOR
CLY	[ 4 ] : 4"	[ SQ ] : SQUARE	2700K/3000K/3500K/4000K/5000K	[ /WH ] : WHITE

**CLY6SQ Series**

The 6" CLY square series features an ultra low-profile design at a value contractors need. The detachable junction box allows for more freedom of installation during remodels and new construction.



EXAMPLE: CLY6SQ-30K/WH

SERIES	SIZE	TYPE	COLOR TEMP	COLOR
CLY	[ 6 ] : 6"	[ SQ ] : SQUARE	2700K/3000K/3500K/4000K/5000K	[ /WH ] : WHITE



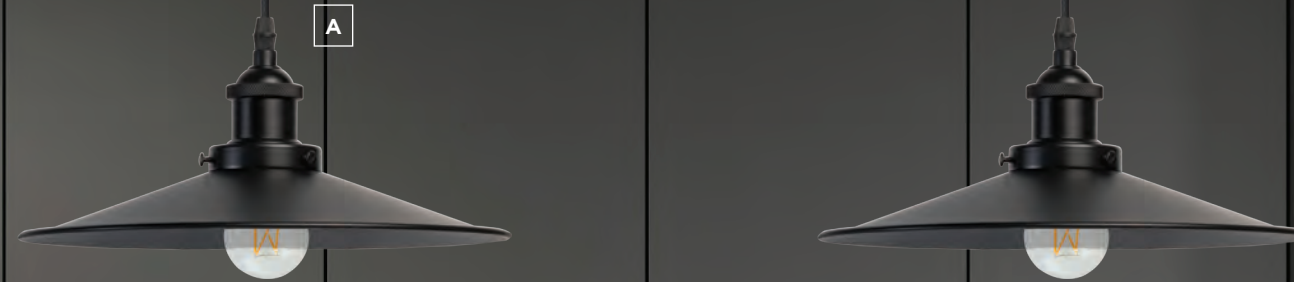
# Decorative Lighting

Suggested Products:

**A: ADPSBK** paired with **FLEDF4.9G25827C** (see page 32,33)

**TAMLITE**  
LIGHTING

**FUSION**  
LAMPS



Using light to create focal points in a room can be an effective way to bring life and excitement to a space.

Decorative pieces can be used to direct attention to furniture or art. Combining these with recessed spotlights can create museum-like exhibits for your pieces.

# Decorative Lighting

Suggested Products:

**A: ADP5BK Series** paired with **FLEDF4B10CAND827C** (see page 33)



## DECORATIVE LIGHTING

### ADP5BK

Adjustable Drop 5 Pendant



### ADOP8BK

Drop 8 Pendant Chandelier



### ADPSBK

Shallow Cone Pendant



### ADPCGB

Golden Bronze Pendant



### ADPIDBK

Industrial Wall Pendant



### ADSIDBK

Industrial Wall Sconce



### ADPEPB

Egg Pendant Light



### ADPGB

Golden Brass Pendant Light



## RECOMMENDED LED LAMPS

### LED FILAMENT Series

LED Filament lamps replicated the look and feel of traditional incandescent lamps while providing the energy savings of LED.

#### FLEDF4B10CAND827C

4W | B10 | DIM 827  
STOCK # 0316-2909



#### FLEDF5ST19724A

5W | ST19 | DIM 724  
STOCK # 0316-2918



#### FLEDF7.5A19827C

7.5W | A19 | DIM 827  
STOCK # 0316-2915



#### FLEDF4.9G25827C

4.9W | G25 | DIM 827  
STOCK # 0391-2471



#### FLEDF4B10MED827C

4W | B11 | DIM 827  
STOCK # 0527-7690



# Accent Lighting

Suggested Products:

**A:** TALRT Led Ribbon Tape (see page 37)

TAMLITE LIGHTING FUSION LAMPS

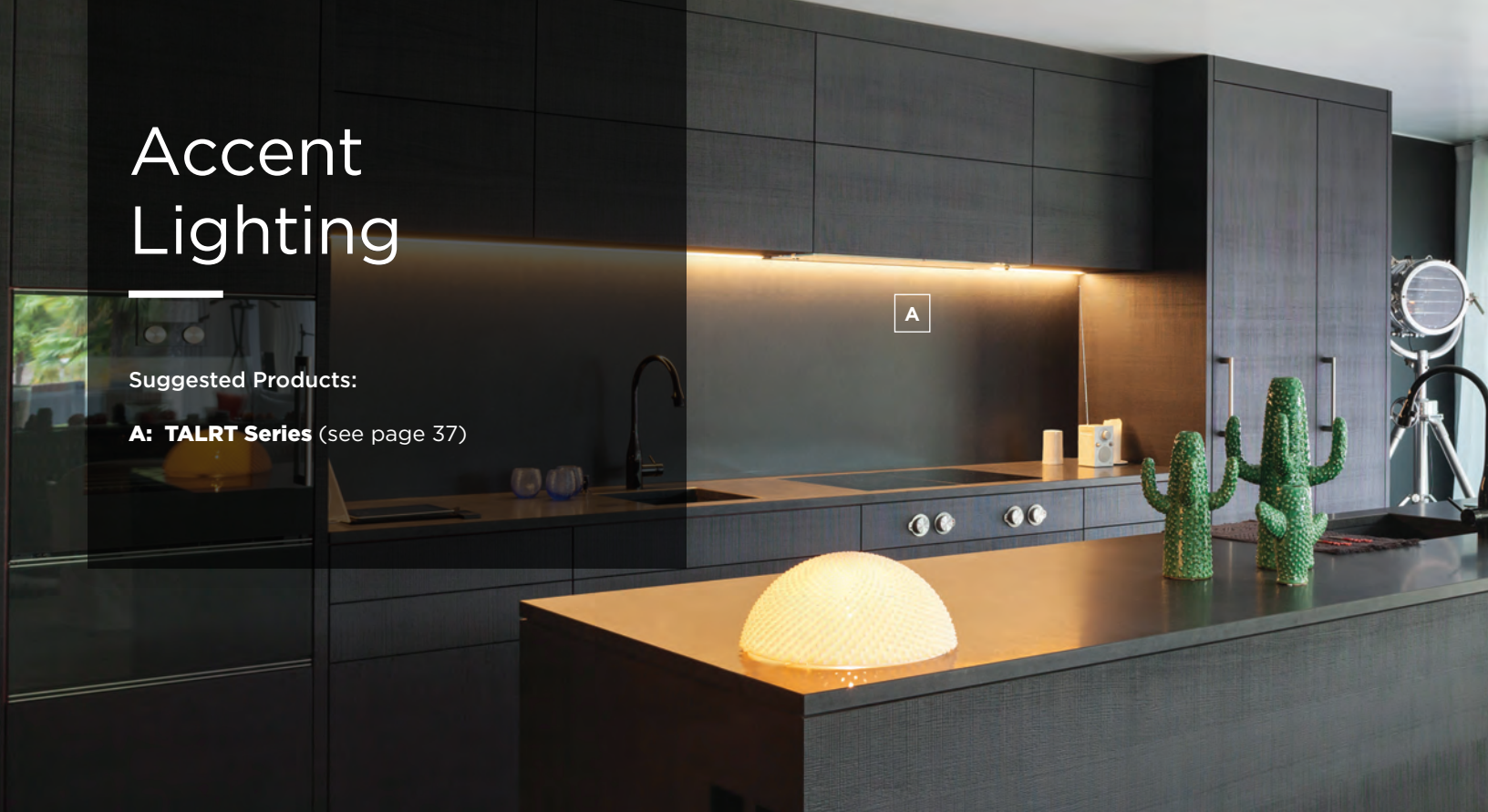
A

Where task lighting and general lighting provide functional light, accent light can add a modern touch and compliment designer finishes.

# Accent Lighting

Suggested Products:

**A: TALRT Series** (see page 37)



## TALRT Series

Packaged in a simple-to-use 12V 16' reel, the LED Ribbon Tape Kit easily installs under cabinets with the 3M 300MP adhesive and included mounting clips.



### TALRT LED Ribbon Tape Reels



Cool White | 6000K  
**TALRT16R-CWG2**



Warm White | 2700K  
**TALRT16R-WWG2**



Cool & Warm White  
3000-5000K  
**TALRT16R-CW/WWG2**



Multi-Color RGB  
**TALRT16R-RBG2**



Multi-Color Chase RGB  
**TALRT16R-CTG2**



## ACCENT LIGHTING



### TALRT LED Ribbon Tape Kits

The TALRT16KIT includes everything needed to bring color options to any job or installation. The 16' spool can be cut & spliced every 3 inches on clearly marked cut points to create custom lengths for your installation needs. Splice connectors included will allow you to add angles and jump gaps. Each kit also includes end caps and heat shrink tubes that will reseal the tape to maintain the integrity of the IP65 rating.



SERIES	COLOR TEMP	GENERATION
TALRT16KIT-	[ CW ] : COOL WHITE	[ G2 ] : Generation 2

SERIES	COLOR TEMP	GENERATION
TALRT16KIT-	[ WW ] : WHITE WHITE	[ G2 ] : Generation 2

SERIES	COLOR TEMP	GENERATION
TALRT16KIT-	[ CW/WW ] : COOL WHITE/WHITE WHITE	[ G2 ] : Generation 2

SERIES	COLOR TEMP	GENERATION
TALRT16KIT-	[ RGB ] : COLOR CHANGE	[ G2 ] : Generation 2

SERIES	COLOR TEMP	GENERATION
TALRT16KIT-	[ CT ] : CHASE TAPE	[ G2 ] : Generation 2

\*16' maximum run length per driver for 12 volt LED Ribbon Tape.



A

B

## Custom CSRT

Prevent technical issues by first contacting Tamlite Lighting with your exact job specifications. All we need are your desired LED Ribbon Tape and splice lengths, and we can custom build LED Ribbon Tape designed around your custom application. With pre-cut LED Ribbon Tape, there is no need for tools or adjustment on the job site. Simply install it, and you are ready to go. No measuring and no soldering.

Suggested Products:

**A:** CSRT-NW (see page 39)

**B:** TRRRRT-RGBNW (see page 40)

**CONTACT TAMLITE LIGHTING TODAY**

Email: [info@tamliteusa.com](mailto:info@tamliteusa.com)  
Customer Service: 772.878.4944

## ACCENT LIGHTING

TAMLITE  
LIGHTING

### CSRT Series

High-quality accent lighting in the quantities contractors need. Featuring electronic dimmable 24V drivers and splice connectors that give greater flexibility than traditional accent lighting. Contact the factory for a custom ribbon tape solution today.

#### Tape Color

**B:** Black Ribbon  
**W:** White Ribbon

#### Options

**BLANK:** Standard Lumen  
**HL:** High Lumen

#### Length

**100R:** 100 FT Reel



Warm White | 2700K  
**CSRT100RB-WW**  
**CSRT100RW-WW**



Neutral White | 4000K  
**CSRT100RB-NW**  
**CSRT100RW-NW**



Cool White | 5000K  
**CSRT100RB-CW**  
**CSRT100RW-CW**



HL Warm White | 2700K  
**CSRT100RB-WWHL**  
**CSRT100RW-WWHL**



HL Neutral White | 4000K  
**CSRT100RB-NWHL**  
**CSRT100RW-NWHL**



HL Cool White | 5000K  
**CSRT100RB-CWHL**  
**CSRT100RW-CWHL**

SERIES	LENGTH	COLOR	COLOR TEMP	OPTIONS
CSRT	[ 100R ] : 100 Ft. Reel	[ B ] : Black Ribbon	[ -WW ] : 27K Warm White	[ BLANK ] : No Options [ HL ] : High Lumens
		[ W ] : White Ribbon		

SERIES	LENGTH	COLOR	COLOR TEMP	OPTIONS
CSRT	[ 100R ] : 100 Ft. Reel	[ W ] : White Ribbon	[ -WW3K ] : 3K Warm White	[ BLANK ] : No Options [ HL ] : High Lumens

SERIES	LENGTH	COLOR	COLOR TEMP	OPTIONS
CSRT	[ 100R ] : 100 Ft. Reel	[ B ] : Black Ribbon	[ -NW ] : 4K Neutral White	[ BLANK ] : No Options [ HL ] : High Lumens
		[ W ] : White Ribbon		

SERIES	LENGTH	COLOR	COLOR TEMP	OPTIONS
CSRT	[ 100R ] : 100 Ft. Reel	[ B ] : Black Ribbon	[ -CW ] : 5K Cool White	[ BLANK ] : No Options [ HL ] : High Lumens
		[ W ] : White Ribbon		

## ACCENT LIGHTING



### TRRRT16KITRGBW (Wet/Dry)

The TRRRT16KIT includes everything needed to bring RGBW color options to any job or installation. The RGBW, color-changing, ribbon tape will allow you to create an ever-changing ambiance to suit any mood desired. This kit includes an RF remote and receiver that makes changing colors, setting levels, and creating color shifts easy and fun. The 16' spool can be cut & spliced every 4 inches on clearly marked cut points to create custom lengths for your installation needs. Splice connectors included will allow you to add angles and jump gaps.



**LED**

### TRRRT16KITRGBW (Wet/Dry) Ribbon Tape Reels



Multi-Color RGB | Warm White | 3000K  
**TRRRT16R-RGBWW**



Multi-Color RGB | Neutral White | 4000K  
**TRRRT16R-RGBNW**

SERIES	16 FT REEL	COLOR TEMP	LOCATION
TRRRT16KIT	[ -RGB ] : COLOR CHANGE	[ WW ] : 3000K [ NW ] : 4000K	[ BLANK ] : DRY IP20

SERIES	16 FT REEL	COLOR TEMP	LOCATION
TRRRT16KIT	[ -RGB ] : COLOR CHANGE	[ WW ] : 3000K [ NW ] : 4000K	[ -WET ] : WET IP65

Packaged in a simple-to-use 24V 16'

\*32' maximum run length per driver for 24 volt LED Ribbon Tape

## 24 VOLT DRIVERS



### 24 Volt LED Ribbon Tape Drivers

#### CSRT96EDD

24V 96W electronic dimmable driver



#### TRRRT70DWT

24V 70W electronic dimmable driver



## 12 & 24 VOLT DRIVERS



### TLVC Series

Low Voltage Driver and Dimmer switch integrated into one unit. The TLVC accepts 120v and converts it to 12 VDC or 24 VDC.



SERIES	WATTAGE	VOLTAGE
TLVC	60W	-12
TLVC	60W	-24

## ALUMINUM CHANNEL



### Aluminum Channel

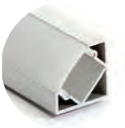
#### CSRTAL4RD

4' aluminum channel with a large milky lens to maximize light diffusion when mounted.



#### CSRTAL4CR

4' aluminum channel with a 45° angled milky lens for light diffusion in corners.



#### CSRTAL4SL

4' aluminum channel with slim milky lens for light diffusion of a flat surface.



#### TALRT4MC

4' plastic mounting channel without a lens for mounting on flat surfaces.



## CSRT CONNECTORS



### CSRT 24 Volt Connectors

#### CSRT21C

2" Connector Cable



#### CSRT61C

6" Connector Cable



#### CSRT121C

12" Connector Cable



#### CSRT241C

24" Connector Cable



#### CSRT4FT1C

4' Connector Cable



#### CSRT8FT1C

8' Connector Cable



#### CSRTB1C

Butt End Connector



## TALRT ACCESSORIES



### TALRT 12 Volt Accessories

**TALRT-2WAY**  
2 WAY  
SPLITTER



**TALRTMM**  
MALE TO MALE  
CONNECTOR



**TALRTBSC**  
BUTT SPLICE  
CONNECTOR



**TALRT2SC**  
2" SPLICE  
CONNECTOR



**TALRT6SC**  
6" SPLICE  
CONNECTOR



**TALRT12SC**  
12" SPLICE  
CONNECTOR



**TALRT24SC**  
24" SPLICE  
CONNECTOR



**TALRT8FTSC**  
8' SPLICE  
CONNECTOR



**TALRTCLIPS**  
RUBBER MOUNTING  
CLIPS FOR LED  
RIBBON TAPE



**TALRTSPLG**  
SEALING PACK  
4 HEAT SHRINK  
TUBES



**TALRT-RF-CTG2**  
RECEIVER/CONTROLLER  
FOR CTG2



**TALRT-RF-CW/WWG2**  
RECEIVER/CONTROLLER  
FOR CW/WWG2



**TALRT-RF-RGBG2**  
RECEIVER/CONTROLLER  
FOR RGBG2



**TALRT-RF-SCG2**  
RECEIVER/CONTROLLER  
FOR SINGLE COLOR  
CWG2 OR WWG2



**TALRTDRIVER**  
12V DC DRIVER



**TALRT-AMP**  
AMPLIFIER



## TRRRT ACCESSORIES



### TRRRT 24 Volt Accessories

**TRRRT-2WAY**  
2 WAY  
SPLITTER



**TRRRTBSC**  
BUTT  
SPLICE



**TRRRTBSC-WET**  
BUTT SPLICE  
CONNECTOR IP65  
**IP65**  
RATING



**TRRRT2SC**  
2" SPLICE  
CONNECTOR



**TRRRT6SC**  
6" SPLICE  
CONNECTOR



**TRRRT12SC**  
12" SPLICE  
CONNECTOR



**TRRRT24SC**  
24" SPLICE  
CONNECTOR



**TRRRT4FTSC**  
4' SPLICE  
CONNECTOR



**TRRRT8FTSC**  
8' SPLICE  
CONNECTOR



**TRRRT2SC-WET**  
2" SPLICE  
CONNECTOR  
IP65  
**IP65**  
RATING



**TRRRT6SC-WET**  
6" SPLICE  
CONNECTOR  
IP65  
**IP65**  
RATING



**TRRRT12SC-WET**  
12" SPLICE  
CONNECTOR  
IP65  
**IP65**  
RATING



**TRRRT24SC-WET**  
24" SPLICE  
CONNECTOR  
IP65  
**IP65**  
RATING



**TRRRT4FTSC-WET**  
4' SPLICE  
CONNECTOR  
IP65  
**IP65**  
RATING



**TRRRT8FTSC-WET**  
8' SPLICE  
CONNECTOR  
IP65  
**IP65**  
RATING



**TRRRT-RF**  
RECEIVER/  
CONTROLLER



**TRRRT-BT**  
BLUE TOOTH  
CONTROL



**TRRRT**  
TRRRT-ALEXA  
CONTROL



**TRRRT36WDRIVER**  
24V 36W DRIVER



**TRRRT70WDRIVER**  
24V 70W DRIVER



# Under Cabinet Lighting

## Suggested Products:

**A: TAUC Series** (see page 44)



## TAUC Series

The TAUC series of under cabinet lights combine modern technology with a simple and elegant design. The TAUC series gives a smooth light source to replicate fluorescent lighting. The TAUC fixtures are long-lasting and energy efficient.



EXAMPLE: TAUC08WH

SERIES	SIZE	COLOR FINISH
TAUC	[ 08 ] : 8" [ 11 ] : 11" [ 18 ] : 18" [ 22 ] : 22" [ 32 ] : 32"	[ WH ] : WHITE [ MO ] : MOCHA

TAUC 8" only available in white.

## TRRPL Series

The TRRPL puck lights are great for adding accent lighting to areas in your home or display shelves. More options available.



EXAMPLE: TRRPL-30K/WH

SERIES	SIZE	TEMPERATURE	HOUSING COLOR
TRRPL	3" DIAMETER	[ -30K ] : 3000K [ -40K ] : 4000K	[ /WH ] : WHITE



## UNDER CABINET LIGHTING



### TRRMUC Series

The TRRMUC under cabinet lights allow for a hidden installation while providing continuous linear light.



EXAMPLE: TRRMUC1205WH

SERIES	LENGTH	WATTAGE	COLOR	TEMPERATURE
TRRMUC	[ 12 ] : 12" [ 20 ] : 20" [ 40 ] : 40"	[ 05 ] : 5W [ 08 ] : 8W [ 15 ] : 15W	[ WH ] : WHITE	[ BLANK ] : 3000K [ -4K ] : 4000K

## ACCESSORIES



### TRRMUC Accessories

**TRRMUC-DS**  
DOUBLE SENSOR



**TRRMUC-CC**  
3 FOOT MALE TO MALE  
CONNECTOR CABLE



**TRRMUC-TD**  
TOUCH DIMMER



**TRRMUC-MS**  
MASTER SWITCH



**TRRMUC-FCC**  
FLAT CORNER  
CONNECTOR



**TRRMUC-AB**  
ADJUSTABLE BRACKET



**TRRMUC-BC**  
BUTT CONNECTOR



**TRRMUC-48WD**  
48W DRIVER



### TRRPL Accessories

**TRRPL-8WAY**  
8 WAY SPLITTER



**TRRPL-4WAY**  
4 WAY SPLITTER



**TRRPL-CCFM**  
3 FEET MALE TO  
FEMALE CONNECTOR



**TRRPL-36WD**  
36W DRIVER



**TRRPL-DIMMER**  
INLINE DIMMER





# General Lighting

Suggested Products:

A: **CWLED** (see page 49)

**TAMLITE** LIGHTING **FUSION** LAMPS

A

General lighting is primarily used in functional spaces. Improve the appearance and add utility to closets, laundry rooms, sheds, and garages.

# General Lighting

Suggested Products:

**A: WLSLED** (see page 48)



## STRIP LIGHTS



### WLSLED Series

The WLSLED series wraparounds clean and shallow fixture design make it ideal for general illumination in areas such as garages. The acrylic prismatic lens helps reduce glare while maximizing light output, ideal for low-hanging heights like garages or workshops. The LEDT version is designed to work with LED linear tubes.



EXAMPLE: WLSLED4-40D1P1L840

SERIES	LENGTH	BOARD LUMENS	LENS	No. OF DRIVERS	CRI	COLOR TEMP.	OPTION
WLSLED	4: 4'	40: 4000 lumens	BLANK: No lens P1: Prismatic lens	D1: 1 Driver	L8: >85 CRI	35: 3500K 40: 4000K 50: 5000K	BLANK: No Options EMERGENCY BACKUP: -EM

EXAMPLE: WLSLEDT4-18D2P1L840

SERIES	LENGTH	LAMP WATTAGE	LAMP QTY	LENS	LAMPS INCLUDED	CRI	COLOR TEMP.	OPTION
WLSLEDT	4: 4'	-18: 18W Lamps	D2: 2 Lamps	BLANK: No lens P1: Prismatic lens	BLANK: No lamps L: Lamps included	8: 82 CRI	40: 4000K 50: 5000K	BLANK: No Options EMERGENCY BACKUP: -EM

For more options please contact TamLite Lighting.

## STRIP LIGHTS



### SLNLED Series

The SLNLED narrow strip series is suitable for general purpose lighting in a wide variety of environment. The narrow profiles makes this fixture a great fit for residential applications.



EXAMPLE: SLNLED4-40D1O1L840

SERIES	LENGTH	BOARD LUMENS	No. OF DRIVERS	LENS	CRI	COLOR TEMP.	OPTION
SLNLED	4: 4'	40: 4000 lumens	D1: 1 Driver	BLANK: No Lens O1: With Frosted Lens	L8: >80 CRI	35: 3500K 40: 4000K 50: 5000K	EMERGENCY BACKUP: -EM

### CWLLED Series

The CWLLED Series corridor economy wraparound features this fixture utilizes a low brightness, extruded PC lens for dependable performance and good looks.



EXAMPLE: CWLLED4-32D1L850

SERIES	SIZE	LUMENS & NO. OF DRIVERS	CRI	COLOR TEMP.
CWLLED	2: 2'	[ -20D1 ] : 2300 Lumens	[ L8 ] : CRI±80	40: 4000K
	4: 4'	[ -32D1 ] : 4000 Lumens	[ L8 ] : CRI±80	50: 5000K

### SLWLED Series

The SLWLED striplight wide series is suitable for general purpose lighting such as garages and other residential applications. The LEDT version is designed to work with LED linear tubes.



EXAMPLE: SLWLED4-40D1O1L840

SERIES	LENGTH	LUMEN OUTPUT	No. OF DRIVERS	CRI	COLOR TEMP.	OPTION
SLWLED	4: 4'	40: 4000 lumens	D1: 1 Driver	L8: >80 CRI	35: 3500K 40: 4000K 50: 5000K	BLANK: No Option EMERGENCY BACKUP: -EM

EXAMPLE: SLWLEDT4-18D2L840

SERIES	LENGTH	LAMP WATTAGE	LAMP QTY	LAMPS INCLUDED	CRI	COLOR TEMP.	OPTION
SLWLEDT	4: 4'	-18: 18W Lamps	D2: 2 Lamps	L: Lamps Included	8: >82 CRI	40: 4000K 50: 5000K	BLANK: No Option EMERGENCY BACKUP: -EM



## General Lighting

Suggested Products:

A: **TALRT16KIT-CWWWG2** (see page 37)

## RECOMMENDED LED LAMPS

FUSION  
LAMPS

### LED T8 Bypass Tubes

The T8 LED bypass linear lamps provide the efficiency of fluorescent technology in recessed, surface-mounted, and specialty fixtures. The 50,000-hour lifetime of these lamps far outlast most fluorescent equivalents and provide savings on replacement labor and maintenance costs.

**FLED18T8/840/BYPASS**  
18W | T8 G13 4K 4FT BYPASS DLC  
**STOCK #** 0308-8614

**FLED15T8/840/BYPASS**  
15W | T8 G13 4K 4FT BYPASS DLC  
**STOCK #** 0386-7006

**FLED18T8/850/BYPASS**  
18W | T8 G13 5K 4FT BYPASS DLC  
**STOCK #** 0308-8617

**FLED15T8/850/BYPASS**  
15W | T8 G13 5K 4FT BYPASS DLC  
**STOCK #** 0386-7009

### LED T8 Bypass Tubes Color Selectable

The T8 LED bypass color selectable linear lamps provide the efficiency of fluorescent technology in recessed, surface-mounted, and specialty fixtures. The 50,000-hour lifetime of these lamps far outlast most fluorescent equivalents and provides savings on replacement labor and maintenance costs.

**FTL18T8/CS/DUAL**  
18W | T8 G13 CS(35K/4K/5K) 4FT DUAL  
**STOCK #** 0581-9718

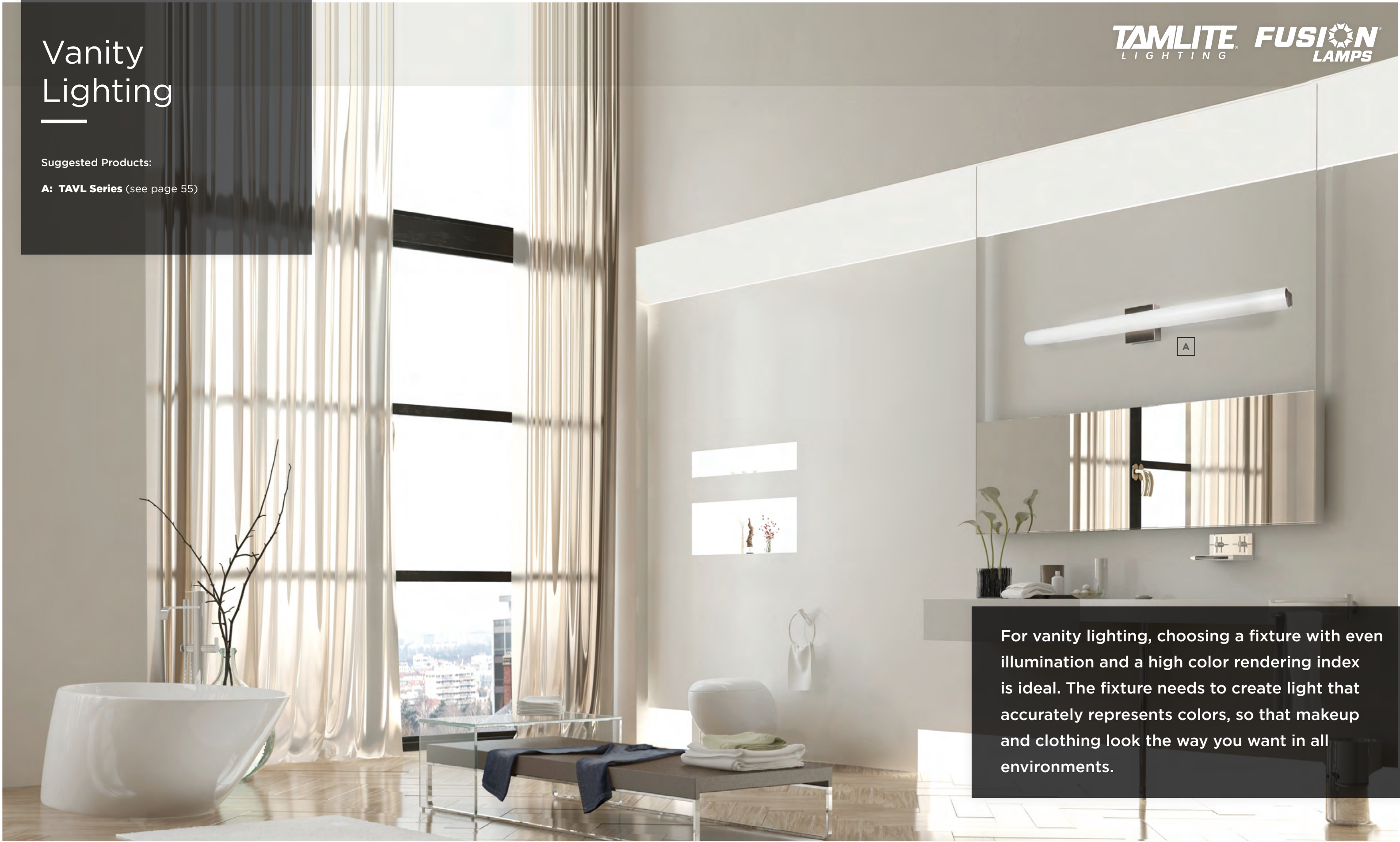


# Vanity Lighting

Suggested Products:

**A: TAVL Series** (see page 55)

**TAMLITE** LIGHTING **FUSION** LAMPS



For vanity lighting, choosing a fixture with even illumination and a high color rendering index is ideal. The fixture needs to create light that accurately represents colors, so that makeup and clothing look the way you want in all environments.



# Vanity Lighting

Suggested Products:

**A: TAVL Series** (see page 55)

## VANITY LIGHTING



### TAVL Series

The TAVL series combines modern technology with a simple and elegant design. By using LED as a light source, the TAVL fixtures are long-lasting and energy efficient.



EXAMPLE: TAVL24-3SN

SERIES	LENGTH	COLOR TEMP.	FINISH
TAVL	24: 24" 36: 36"	-3: 3000K -4: 4000K	SN: Satin Nickel

## RECOMMENDED LED LAMPS



### LED Filament Series

LED Filament lamps replicated the look and feel of traditional incandescent lamps while providing the energy savings of LED.

**FLEDF4.9G25827C**  
4.9W | G25 | DIM 827 CLEAR  
STOCK # 0391-2471



### LED A19

**FL9A19827**  
9W | A19 | DIM 827  
STOCK # 0582-4455

**FL9A19830**  
9W | A19 | DIM 830  
STOCK # 0582-4458

**FL9A19840**  
9W | A19 | DIM 840  
STOCK # 0582-4464

**FL9A19850**  
9W | A19 | DIM 850  
STOCK # 0582-4467



# Outdoor Lighting

Suggested Products:

**A: TATFLL Series** (see page 59)

**TAMLITE** LIGHTING **FUSION** LAMPS

Bring light and color to the outdoors. Make privacy walls, landscaping, and other accents the center focal point of your outdoor space. Floodlights can illuminate trees and shrubs, while security lights can provide protection to your home past dusk.



# Outdoor Lighting

Suggested Products:

**A: TCOFLRGBW Series** (see page 60)

## FLOOD LIGHTS



### TABFL Series

The TABFL bullet flood offers a knuckle mounting system & a 30-degree beam for your lighting applications. Add this fixture to your landscape range for a clean discreet look.



EXAMPLE: TABFL5015BZK

SERIES	COLOR TEMP.	WATTAGE	FINISH	MOUNTING	VOLTAGE
TABFL	[ 30 ] : 3000K [ 50 ] : 5000K	[ 15 ] : 15 Watts [ 28 ] : 28 Watts [ 42 ] : 42 Watts	[ BZ ] : Bronze	[ K ] : 1/2" Knuckle	[ BLANK ] : 120-277V

### TATFLL Series

The TATFLL series flood light is a versatile unit that can be adjusted for any application. Ideal as an uplight or for landscape lighting, the TATFLL series is IP65 rated to stand up to the harshest of outdoor environments.



EXAMPLE: TATFLL3015BZK

SERIES	COLOR TEMP.	LAMP WATTAGE	FINISH	MOUNTING
TATFLL	[ 30 ] : 3000K [ 40 ] : 4000K [ 50 ] : 5000K	[ 15 ] : 15 watts [ 30 ] : 30 watts [ 50 ] : 50 watts	[ BZ ] : Bronze [ WH ] : White	[ BLANK ] : Yoke Mount [ K ] : 1/2" Knuckle Mount

### CHRG Series

Electrify your flood application with the versatile field adjustable wattage/color selectable CHRG floods. With this knuckle/yoke flood going up to 80 watts as well as the option to field adjust wattage, color temp, and a photocell, you can charge into any job knowing you have what you need with the CHRG series.



EXAMPLE: CHRG25WSCSBZ

SERIES	SIZE	WATTAGE	COLOR TEMP	BODY COLOR	MOUNTING
CHRG	[ 25 ] : 25w,15w,10w [ 60 ] : 60w,50w,30w [ 80 ] : 80w,60w,40w	[ WS ] : Wattage Selectable	[ CS ] : Color Selectable	[ BZ ] : Bronze	[ BLANK ] : Yoke [ K ] : Knuckle

## FLOOD LIGHTS



### TCOFLRGBW572BK-60

This dimmable, 72W RGBW Flood offers 16 different colors with 4 modes. It is the perfect fixture for residential and commercial applications. Tuya app compatible.



EXAMPLE: TCOFLRGBW572-60

SERIES	COLOR	COLOR TEMP	WATTAGE	FINISH	BEAM ANGLE
TCOFLRGBW	[ RGBW ] : RGBW	[ 5 ] : 5K White Lumens	[ 72 ] : 72W	[ BK ] : Black	[ -60 ] : 60°

### TCOFLRGBW

This dimmable, 30W RGBW Flood offers 16 different colors with 4 modes. It is the perfect fixture for residential and commercial applications. Tuya app compatible.



EXAMPLE: TCOFLRGBW530BK-60

SERIES	COLOR	COLOR TEMP	WATTAGE	FINISH	BEAM ANGLE
TCOFL	[ RGBW ] : RGBW	[ 5 ] : 5K White Lumens	[ 30 ] : 30W	[ BK ] : Black	[ -60 ] : 60°

## ACCENT LIGHTING



### TASLL Series

Designed for maintenance-free illumination of outdoor spaces, this easy-to-install LED steplight is ideal for residential accent lighting in places like stairways and walkways.



Available in:

- 3000K color temperature.
- **SS**: Stainless Steel | **BK**: Black



SERIES	FACEPLATES	COLOR
TASLL	[ 3 ] : Amount of Faceplates	[ SS ] : Stainless Steel* [ BK ] : Black

Color matching standard screws included. Fixtures are not rated for coastal areas.  
\*Stainless steel color is a finish not actual stainless steel.

## WALL MOUNT



### MWPWSCS Series

The MWP field adjustable mini wallpack is a versatile wall pack packed with a 3in1 field adjustable switch. The fixture is wattage and color selectable. The fixture also comes with a photocell control with a switch to turn on/off in the field.



EXAMPLE: MWPWSCS

SERIES	COLOR TEMP	WATTAGE
MWP	[ WS ] : 30W,20W,10W	[ CS ] : 3K,4K,5K

### COWS Series

The COWS has a slim body with a variety of different style covers to create different light effects for various needs. Face plates sold separately.



EXAMPLE: COWS3015BZ

SERIES	COLOR TEMP	WATTAGE	FINISH
COWS	[ 30 ] : 3000K [ 40 ] : 4000K [ 50 ] : 5000K	[ 15 ] : 15 Watts	[ BZ ] : Bronze [ WH ] : White

### Cows Series Face Plates



**COWSP01**  
Available in:  
**White & Bronze**



**COWSP02**  
Available in:  
**White & Bronze**



**COWSP03**  
Available in:  
**White & Bronze**



**COWSP04**  
Available in:  
**White**



## SECURITY LIGHTS



### CMS2 Series

The CMS2 series of security lights provide an energy-efficient way to provide safety and security to your home.



EXAMPLE: CMS2BZ

SERIES	NO. OF HEADS	COLOR
CMS	[ 2 ] : 2 Heads	[ BZ ] : Bronze [ WH ] : White

### CMS2180 Series

The CMS2180 series of security lights provide an energy-efficient way to provide safety and security to your home.



EXAMPLE: CMS2180BZ

SERIES	NO. OF HEADS	DETECTION	COLOR
CMS	[ 2 ] : 2 Heads	[ 180 ] : 180°	[ BZ ] : Bronze [ WH ] : White

### TRRMSCS Series

The TRRMSC2180 series of security lights provide an energy-efficient way to provide safety and security to your home.



EXAMPLE: TRRMSCS2180BZ

SERIES	NO. OF HEADS	DETECTION	COLOR
TRRMSCS	[ 2 ] : 2 Heads	[ 180 ] : 180°	[ BZ ] : Bronze [ WH ] : White

## RECOMMENDED LED LAMPS



### LED PAR38 Lamps

FLED PAR38 LED Lamps are designed to perform and provide accented and focused light that integrates into your existing fixtures.

#### FL13PAR38927

13W | PAR38 LED

STOCK # 0591-9828

#### FL13PAR38930

13W | PAR38 LED

STOCK # 0591-9831

#### FL13PAR38940

13W | PAR38 LED

STOCK # 0591-9834

#### FL13PAR38950

13W | PAR38 LED

STOCK # 0591-9837



#### Available in:

2700K, 3000K, 4000K, and 5000K color temperatures.



### LED Long Neck PAR30 Lamps

FLED Long Neck PAR30 LED Lamps are designed to perform and provide accented and focused light that integrates into your existing fixtures.

#### FL8PAR30LN927

8W | PAR38 LED

STOCK # 0591-9813

#### FL8PAR30LN930

8W | PAR38 LED

STOCK # 0591-9819

#### FL8PAR30LN940

8W | PAR38 LED

STOCK # 0591-9822

#### FL8PAR30LN950

8W | PAR38 LED

STOCK # 0591-9825



#### Available in:

2700K, 3000K, 4000K, and 5000K color temperatures.



# Bath Fans & Door Bells

Suggested Products:

A: **ABFQ80** (see page 68)

**ADDVENT**

A

Addvent has a wide range of bath fan options to choose from. From quiet to fans with integrated lights, find the perfect one that suits your bathroom space.



## Bath Fans & Door Bells

Suggested Products:

A: **DB1-2WH** (see page 71)

## BATH FANS



### Bath Fans

Addvent offers a variety of bath fans designed to exhaust air quietly and efficiently.



PART#	STOCK CODE	DESCRIPTION
ABF50	0355-7844	50 CFM BATH VENT FAN 120V 3.5 SONES
ABF70	0355-7856	70 CFM BATH FAN 120V 3.5 SONES
ABF80	0579-8853	80 CFM BATH FAN 120V 0.6 SONES
ABF100	0355-7838	100 CFM BATH FAN 120V 2 SONES
ABFCFMA-50100	0554-6232	CFM ADJ BATHFAN 50-100CFM 1.6

### Bath Fan with Light

Addvent offers a variety of ventilation bath fans with lights.



PART#	STOCK CODE	DESCRIPTION
ABF50L	0355-7850	50 CFM BATH FAN W/LIGHT 120V 3.5
ABF70L	0355-7859	70 CFM BATH FAN W/LIGHT 120V 3.5
ABF80L	0579-8856	80 CFM BATH FANW/ LIGHT 120V 0.6
ABF100L	0355-7841	100 CFM BATH FAN W/ LIGHT 120V 2

### Bath Fan with Light

Addvent offers a variety of ventilation bath fans with lights.



PART#	STOCK CODE	DESCRIPTION
ABF80R	0355-7862	80 CFM RECESSED BATH FAN 6" TRIM

### Bath Fan Motor and Grille

The ABF series bath fans are high-performance bath fans designed to exhaust air quietly and efficiently.



PART#	STOCK CODE	DESCRIPTION
ABF50M	0355-7853	50 CFM BATH FAN MOTOR & GRILLE
ABF70M	0554-6199	70 CFM BATH FAN MOTOR & GRILLE

**50 CFM Contractor Pack**

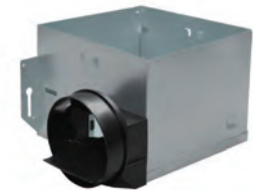
Addvent offers a variety of bath fans designed to exhaust air quietly and efficiently.



PART#	STOCK CODE	DESCRIPTION
ABF50LM	0606-9009	BATH FAN W/LGT MOTOR & GRILLE

**4" Housing Duct**

Addvent offers a variety of bath fans designed to exhaust air quietly and efficiently.



PART#	STOCK CODE	DESCRIPTION
ABF50LH	0606-9000	BATH FAN HOUSING 4" DUCT

**Quiet Bath Fans**

Addvent offers a variety of bath fans designed to exhaust air quietly and efficiently.



PART#	STOCK CODE	DESCRIPTION
ABFQ80	0355-7886	80 CFM ULTRA-QUIET BATH FAN 120V
ABFQ110	0355-7880	110 CFM ULTRA-QUIET BATH FAN
ABFQCFMA-80140	0554-6229	QUIET CFM ADJ BATHFAN 80-140 CFM

**Quiet Bath Fans with Light**

Addvent offers a variety of bath fans designed to exhaust air quietly and efficiently.



PART#	STOCK CODE	DESCRIPTION
ABFQ80L	0355-7889	80 CFM ULTRA-QUIET BATH FAN W/LI
ABFQ110L	0355-7883	110 CFM ULTRA-QUIET BATH FAN W/L

**Motor Retrofit**

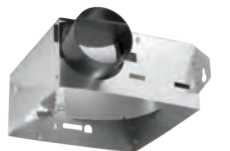
The ABF series is retrofitted for BROAN/NUTONE.



PART#	STOCK CODE	DESCRIPTION
ABF50-RF	0554-6226	50CFM RETROFIT FOR BROAN/NUTONE
ABF70-RF	0554-6445	70CFM RETROFIT FOR BROAN/NUTONE

**Bath Fans Housing**

Bath fan housings for new work and remodel applications.



PART#	STOCK CODE	DESCRIPTION
ABF50H	0355-7847	50 CFM BATH FAN HOUSING
ABF70H	0554-6202	70 CFM BATH FAN HOUSING 4" DUCT

**Bath Accessories**

Addvent retrofit clips pack of 4.



PART#	STOCK CODE	DESCRIPTION
ABFRF CLIPS	0554-6196	ADDVENT RETROFIT CLIPS 4 PK

**Bath Accessories**

Fire damper for ABFQ80 and ABFQ110



PART#	STOCK CODE	DESCRIPTION
ABFFD11	0554-6223	FIRE DAMPER FOR ABFQ80 & ABFQ110

**Double Gang Door Bell Chime Kit**

Never miss a visitor with our versatile single or double gang door chime kits. The Included hardwired push buttons are UL listed, and each kit includes a 10VA transformer.



PART#	STOCK CODE	DESCRIPTION
DB3-2WH	0355-7895	BUILDER CHIME KIT DOUBLE GANG

**Single Gang Door Bell Chime Kit**

Never miss a visitor with our versatile single or double gang door chime kits. The Included hardwired push buttons are UL listed, and each kit includes a 10VA transformer.



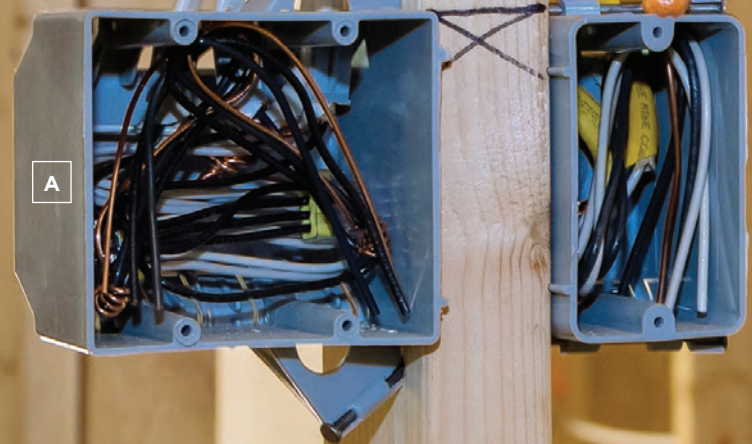
PART#	STOCK CODE	DESCRIPTION
DB1-2WH	0355-7892	BUILDER CHIME KIT SINGLE GANG

# Plastic Switch, Outlet & Ceiling Boxes

Suggested Products:

**A: PSB232** (see page 75)

**B: PSB118** (see page 75)



Switch and outlet boxes can be used in the new construction of a home and provide safe and efficient wire management for electrical switches.



# Plastic Switch, Outlet & Ceiling Boxes

Suggested Products:

A: CM-FSB-NBH (see page 78)

## PLASTIC SWITCH, OUTLET & CEILING BOXES



### New Work - Switch and Outlet Boxes

#### Features

- Knockouts for easy cable entry
- Pre-installed nails for quick installation
- Galvanized nails defend against rust
- ETL listed & 2-hour fire rated



PART#	STOCK CODE	GANG	SIZE	CLAMPS	CARTON QTY.	HEIGHT	WIDTH	DEPTH
PSB118	0583-1769	1	18 CU. IN.	4	100	3.700"	2.250"	2.875"
PSB120	0583-1772	1	20 CU. IN.	4	100	3.700"	2.250"	3.125"
PSB122	0583-1775	1	22 CU. IN.	4	100	3.700"	2.250"	3.500"

#### Features

- Wire clamp for secure installation
- Pre-installed nails for quick installation
- Galvanized nails defend against rust
- ETL listed & 2-hour fire rated



PART#	STOCK CODE	GANG	SIZE	CLAMPS	CARTON QTY.	HEIGHT	WIDTH	DEPTH
PSB232	0583-1778	2	32 CU. IN.	8	50	3.700"	3.940"	3.060"

#### Features

- Wire clamp for secure installation
- Pre-installed nails for quick installation
- Galvanized nails defend against rust
- ETL listed & 2-hour fire rated
- Includes "B" bracket for metal stud installation



PART#	STOCK CODE	GANG	SIZE	CLAMPS	CARTON QTY.	HEIGHT	WIDTH	DEPTH
PSB344	0583-1781	3	44 CU. IN.	12	30	2.687"	3.750"	2.625"

#### Features

- Wire clamp for secure installation
- Pre-installed nails for quick installation
- Galvanized nails defend against rust
- ETL listed & 2-hour fire rated
- Includes "B" bracket for metal stud installation



PART#	STOCK CODE	GANG	SIZE	CLAMPS	CARTON QTY.	HEIGHT	WIDTH	DEPTH
PSB455	0583-1784	4	55 CU. IN.	16	25	2.500"	3.700"	7.600"

**New Work - Ceiling Boxes**

**Features**

- Wire clamp for secure installation
- Pre-installed nails for quick installation
- Galvanized nails defend against rust
- ETL listed & 2-hour fire rated
- Rated for 50lbs fixture



PART#	STOCK CODE	GANG	SIZE	CLAMPS	CARTON QTY.	HEIGHT	WIDTH	DEPTH
PSBR20	0583-1787	3/0 - 4/0	20 CU. IN.	6	75	4.000"	4.000"	2.300"

**Features**

- Wire clamp for secure installation
- Pre-installed nails for quick installation
- Bar hanger included
- ETL listed & 2-hour fire rated
- Rated for 50lbs fixture



PART#	STOCK CODE	GANG	SIZE	CLAMPS	CARTON QTY.	HEIGHT	WIDTH	DEPTH
PSBR20-BHA	0583-3704	3/0 - 4/0	20 CU. IN.	6	75	4.000"	18.25" - 26.75"	2.300"

**Old Work - Switch and Outlet Boxes**

**Features**

- Swing clip for fast installation in existing drywall
- Wire clamp for secure installation
- ETL listed & 2-hour fire rated



PART#	STOCK CODE	GANG	SIZE	CLAMPS	CARTON QTY.	HEIGHT	WIDTH	DEPTH
PSB114-OW	0583-1703	1	14 CU. IN.	4	50	3.125"	2.250"	2.750"
PSB120-OW	0583-1706	1	20 CU. IN.	4	50	3.850"	2.400"	3.600"
PSB225-OW	0583-1709	2	25 CU. IN.	6	30	3.125"	4.000"	2.875"
PSB355-OW	0583-1712	3	55 CU. IN.	6	6	3.720"	6.000"	3.630"
PSB468-OW	0583-1715	4	68 CU. IN.	8	6	3.750"	7.750"	3.560"

**Old Work - Ceiling Boxes**

**Features**

- Swing clip for fast installation in existing drywall
- Wire clamp for secure installation
- ETL listed & 2-hour fire rated
- Rated for up to 6 lbs fixture



PART#	STOCK CODE	GANG	SIZE	CLAMPS	CARTON QTY.	HEIGHT	WIDTH	DEPTH
PSBR18-OW	0583-3698	3/0 - 4/0	18 CU. IN.	4	30	4.380"	4.380"	2.680"



**4" Ceiling Fan and Light Fixture Support Box with Brace Kit**

**Features**

- For new construction applications
- Easy-to-use slide select™ feature for choosing #8 and #10 screw holes
- Protective metal cover eliminates debris or damage to wiring
- Energy-saving round design with side knockouts
- 70 lbs max. ceiling fan weight
- 150 lbs max. light fixture weight



PART#	STOCK CODE	CARTON QTY.	DEPTH	WIDTH
CM-FS4PB-NBH	0262-8045	12	1-1/2"	4"
CM-FSB-NBH	0262-8051	12	1-1/2"	4"
CM-FSDB-NBH	0280-8834	12	2-1/8"	4"

**4" Ceiling Fan and Light Fixture Support Box with Bracket Kit**

**Features**

- For remodeling applications
- Easy-to-use slide select™ feature for choosing #8 and #10 screw holes
- Greater holding power featuring
- 12 total gripping teeth
- Easy glide twin lead screw for fast installation
- Easy grip hex bar
- 70 lbs max. ceiling fan weight
- 150 lbs max. light fixture weight



PART#	STOCK CODE	CARTON QTY.	DEPTH	WIDTH
CM-FSB-OBH	0262-8054	12	1-1/2"	4"
CM-FSDB-OBH	0288-0495	12	2-1/8"	4"

**4" Ceiling Fan and Light Fixture Support Box with Plastic Cover**

**Features**

- For new construction and remodeling applications
- One-sided 3.5" long stud mount with removable joist holding tabs
- Protective plastic cover eliminates debris or damage to wiring
- Energy saving round design
- 70 lbs Max. ceiling fan weight
- 210 lbs max. light fixture weight



PART#	STOCK CODE	CARTON QTY.	CU. IN.	WIDTH
CM-FSLPB	0309-3714	12	12"	4"

**4" Ceiling Fan and Light Fixture Support Box**

**Features**

- For new construction and remodeling applications
- Self-clamping wire entry clamps
- Round fixture boxes offer an optional front-mounted grounding screw
- Max. ceiling fan weight 70 lbs
- Max. light fixture weight 210 lbs



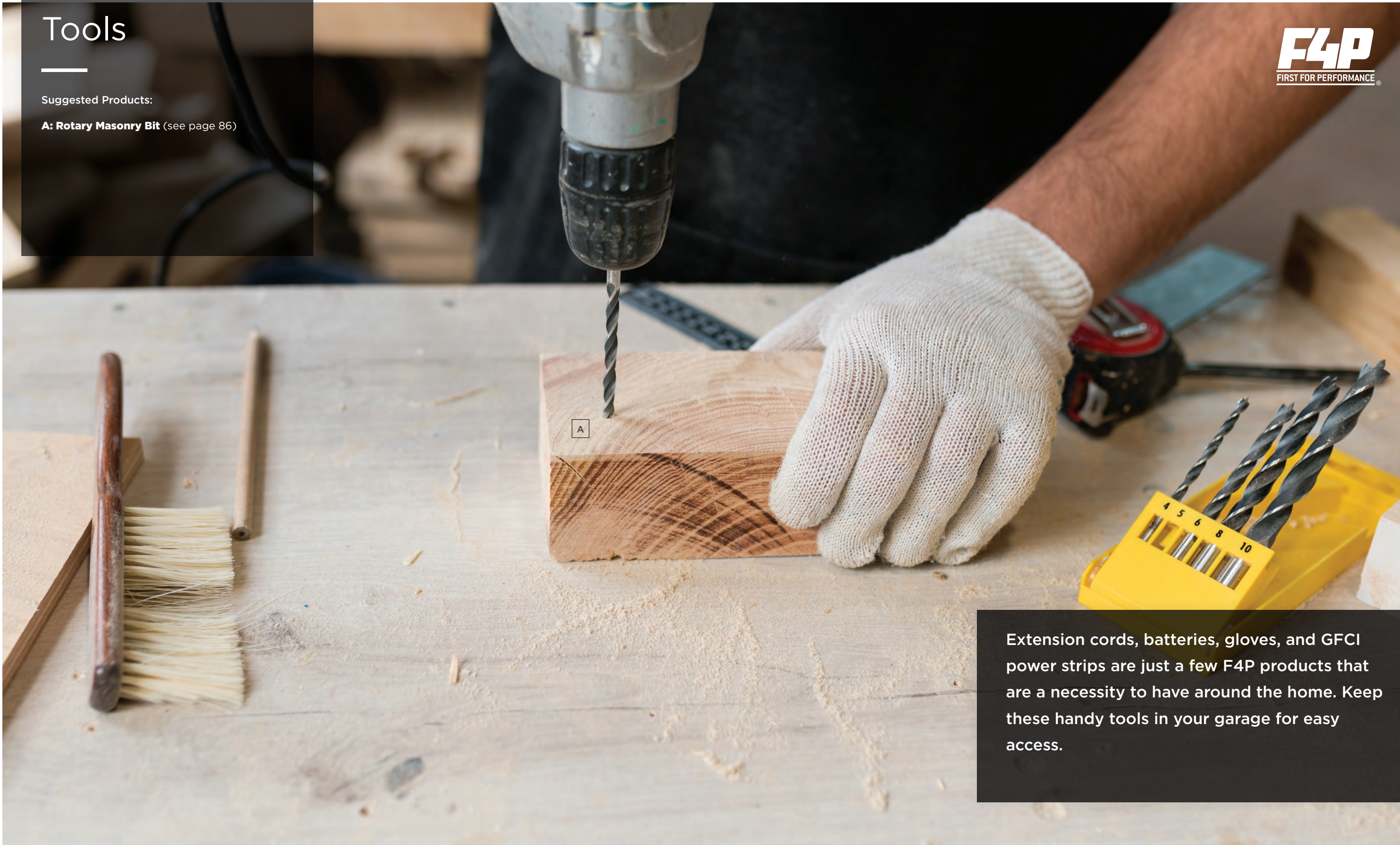
PART#	STOCK CODE	CARTON QTY.	CU. IN.	WIDTH
CM-FSSB-XL	0542-5347	20	16"	4"

# Tools

Suggested Products:

**A: Rotary Masonry Bit** (see page 86)

**F4P**  
FIRST FOR PERFORMANCE®



Extension cords, batteries, gloves, and GFCI power strips are just a few F4P products that are a necessity to have around the home. Keep these handy tools in your garage for easy access.



# Tools

Suggested Products:

A: WH HI VIS 100LE (see page 83)

## TOOLS



### Bucket

With a sturdy handle and stackable design, this durable 5-gallon bucket is easy to store, easy to move, and easily one of the best buckets available for your next project. Lid sold separately.



PART#	STOCK CODE	DESCRIPTION
F4P LID	0557-9628	LID FOR 5 GALLON BUCKET
F4P BUCKET	0557-9625	F4P 5 GALLON BUCKET

### Gas Can

Stock up today on these 5 gallon gas cans. These cans have a vapor locking quick-flow spout and internal flame mitigation device.



PART#	STOCK CODE	DESCRIPTION
F4P-GAS-5GAL	0550-6443	5 GALLON GAS CAN W/QUICK FLOW SPOUT

### Portable GFCI Power Strip

Take the power on the go with the Portable GFCI Power Strip. The GFCI circuit breaker and built-in cord wrap, dust covers, and 6' 14/3 cord make this the ideal power strip for any work site.



PART#	STOCK CODE	DESCRIPTION
F4P PS4-6	0338-6640	4 OUTLET GFCI POWER STRIP 6FT

### Extension Cords

F4P extension cords are offered in a variety of options to choose from.



PART#	STOCK CODE	DESCRIPTION
F4P TT25	0315-1077	12/3 SJTW LE TRIPLE TAP FAN EXT CORD
F4P TT50	0327-7146	50FT 12/3 SJTW LE TRIP TAP CORD
WH HI VIS 50LE	0264-0969	50FT EXTENSION CORD 12/3 W/LIGHTED END
WH HI VIS 100LE	0264-0972	100FT EXTENSION CORD 12/3 W/LIGHTED END
F4P 14/3-25LE	0327-7272	25FT 14/3 SJTW LIT-END EXT CORD
F4P 14/3-50LE	0327-7266	50FT 14/3 SJTW LIT-END EXT CORD
F4P 14/3-100LE	0327-7269	100FT 14/3 SJTW LIT-END EXT CORD



**Drywall Saw**

The heavy-duty F4P Drywall Saw is ideal for use on softwood, drywall, and plasterboard. The ergonomically designed rubber handle combines constructional strength with soft grip for the ultimate user comfort, combined with a fully hardened 6" carbon steel blade for maximum durability.



PART#	STOCK CODE	DESCRIPTION
F4P DWS	0305-7549	DRYWALL SAW 150MM

**Folding Utility Knife**

The F4P dual-position folding utility knife breathes new life into "box cutters". This heavy-duty stainless steel and aluminum knife has two locking positions and folds up for ultimate portability.



PART#	STOCK CODE	DESCRIPTION
F4P UFK	0304-7655	FOLDING UTILITY KNIFE 2 POSITION

**Batteries**

F4P Alkaline Batteries are rated with a 10-year shelf life and offer long-lasting and reliable performance for both high and low drain devices.



PART#	STOCK CODE	DESCRIPTION
F4P AL-AA	0485-6289	F4P AA BATTERY
F4P AL-AAA	0485-6292	F4P AAA BATTERY
F4P AL-9V	0485-6193	F4P 9V BATTERY
F4P AL-C	0485-6295	F4P C BATTERY
F4P AL-D	0485-6298	F4P D BATTERY

**Light Spandex Nylon Nitrile Glove**

Light and breathable with nitrile grip coating.



PART#	STOCK CODE	DESCRIPTION
F4P GLV-4131-S	0330-8028	LIGHT GLOVE SPAN+NITRILE SMALL
F4P GLV-4131-M	0330-8031	LIGHT GLOVE SPAN+NITRILE MED
F4P GLV-4131-L	0330-8034	LIGHT GLOVE SPAN+NITRILE LARGE
F4P GLV-4131-XL	0330-8037	LIGHT GLOVE SPAN+NITRILE X-LRG



**Bluetooth Job Site Speaker**

The F4P Bluetooth Job Site Speaker is the perfect entertainment tool to add some excitement to those long days on the job. Use either the clip or the strong magnet for ideal placement, while the IP67 rating protects components in the harshest environments. Up to 8 hours of play time per charge and phone call management add convenience to premium sound quality, allowing you to take great sounds wherever you go.



PART#	STOCK CODE	DESCRIPTION
F4P BTSPK-B	0492-3438	PORTABLE BLUETOOTH SPEAKER - BLACK
F4P BTSPK-O	0492-3444	PORTABLE BLUETOOTH SPEAKER - ORANGE

**High-Speed, Steel Step Bits**

F4P's range of high-speed, steel step bits suit every size. The titanium coating greatly improves durability for extended life compared to the black oxide finish of other brands. Other features include a split tip, eliminating the need for a pilot hole, a two-flute design for better control, and a size etched on each step to remove the guesswork.



PART#	STOCK CODE	DESCRIPTION
F4P DB1	0256-1619	F4P 1/8" - 1/2" 13 STEPS 1/4 HEX SHANK
F4P DB2	0256-1622	F4P 3/16" X 1/2" 6 STEPS 1/4" HEX SHANK
F4P DB3	0256-1625	F4P 1/4" - 3/4" 9 STEPS 3/8" HEX SHANK
F4P DB4	0256-1628	F4P 3/16" X 7/8" 12 STEPS 3/8" SHANK
F4P DB5	0256-1634	F4P 7/16" X 1 1/8" 10 STEPS 3/8" HEX SHANK
F4P DB6	0256-1631	F4P 1/4" X 1 3/8" 10 STEPS 3/8" HEX SHANK

**High-Speed Drill Bits**

High-speed drill bits are capable of speedier drilling and are made to last. They're equally suitable for heavy drillers who work in fabrication and general-purpose drilling in wood or metal.



PART#	STOCK CODE	DESCRIPTION
TP87186	0240-6861	DRILL & TAP COMBO - TUBE PACK 6/32
TP87188	0240-6864	DRILL & TAP COMBO - TUBE PACK 8/32
TP87194	0240-6873	DRILL & TAP COMBO - TUBE PACK 1/4-20



**Rotary Masonry Bit**

High-speed drill bits are capable of speedier drilling and are made to last. They're equally suitable for heavy drillers who work in fabrication and general-purpose drilling in wood or metal.



PART#	STOCK CODE	DESCRIPTION
TP3918	0549-8763	ROTARY STRAIGHT SHANK MASONRY DRILL - TUBE PACK 3/16 X 3
TP9706	0243-0348	ROTARY STRAIGHT SHANK MASONRY DRILL - TUBE PACK 3/16 X 3-12
TP9708	0243-0351	ROTARY STRAIGHT SHANK MASONRY DRILL - TUBE PACK 1/4 X 4
TP9852	0240-6879	ROTARY STRAIGHT SHANK MASONRY DRILL - TUBE PACK 1/4 X 6
TP9712	0240-6882	ROTARY STRAIGHT SHANK MASONRY DRILL - TUBE PACK 5/16 X 4
TP9714	0243-0354	ROTARY STRAIGHT SHANK MASONRY DRILL - TUBE PACK 3/8 X 6
TP9720	0255-8220	ROTARY STRAIGHT SHANK MASONRY DRILL - TUBE PACK 1/2 X 6

**135° High-Speed Drill Bit**

High-speed drill bits are capable of speedier drilling and are made to last. They're equally suitable for heavy drillers who work in fabrication and general-purpose drilling in wood or metal.



PART#	STOCK CODE	DESCRIPTION
TPHSD135-18	0243-0330	135 DEGREE HIGH SPEED DRILL - TUBE PACK - 3 PER 1/8
TPHSD135-316	0243-0333	135 DEGREE HIGH SPEED DRILL - TUBE PACK - 2 PER 3/16
TPHSD135-14	0243-0336	135 DEGREE HIGH SPEED DRILL - TUBE PACK - 2 PER
TPHSD135-516	0243-0339	135 DEGREE HIGH SPEED DRILL - TUBE PACK
TPHSD135-716	0563-4270	7/16 HS DRILL BIT TUBE PACK 1 PACK
TPHSD135-38	0243-0342	135 Degree High Speed Drill - Tube Pack 40245
TPHSD135-12	0243-0345	135 Degree High Speed Drill - Tube Pack 40180

**Phillips Bit Tip**

F4P stocks a wide variety of high-quality drill bits to get the job done.



PART#	STOCK CODE	DESCRIPTION
250PB2	0211-9155	PHILLIPS BIT TIP - 10 PER BOX #2 X 1
TP302P	0243-0318	PHILLIPS INSERT BIT TIP - TUBE PACK #2 X 2
TP362P	0243-0327	PHILLIPS INSERT BIT TIP - TUBE PACK #2 X 6



**Magnetic Hex Driver**

Hex Drivers are great for any hex head screw or nut. Contains a strong magnet for maximum holding power.



PART#	STOCK CODE	DESCRIPTION
TPMSHL14	0243-0312	MAGNETIC HEX CHUCK - TUBE PACK 1/4 X 2-9/16
TPMSHL14-6	0253-1979	MAGNETIC HEX CHUCK - TUBE PACK 1/4 X 6
TPMSHL516	0243-0357	MAGNETIC HEX CHUCK - TUBE PACK 5/16 X 2-9/16
TPMSHL516-4	0243-0315	MAGNETIC HEX CHUCK - TUBE PACK 5/16 X 4
TPMSHL516-6	0446-0856	MAGNETIC HEX CHUCK - TUBE PACK 5/16 X 6
TPMSHL38	0243-0360	MAGNETIC HEX CHUCK - TUBE PACK 3/8 X 2-9/16

# Chemicals & Safety

Suggested Products:

**A: F4P FOAM** (see page 92)

**F4P**  
FIRST FOR PERFORMANCE®

A

F4P's line of sealants and caulking help maintain your home where a reliable seal is needed. Wall mountable first aid kits are handy to hang in the garage or have with you on the go in case of emergency.



## Chemicals & Safety

Suggested Products:

**A: F4P SILICONE C** (see page 91)

## CHEMICALS



### Rust Crusher

F4P Rust Crusher is a fast-acting product that quickly loosens rust while penetrating grease and dirt. A transparent, non-staining oil, light film displaces moisture and acts as a corrosion preventative. Jet stream sprays up to two feet for safe, accurate application. It is a one-coat rust and corrosion preventive compound. Pleasant vanilla scent.



PART#	STOCK CODE	DESCRIPTION
F4P RUST CRUSHER	0339-6807	PENETRATING OIL HIGH DIELECTRIC

### Residential Grade Fire Caulk

F4P Fireblock-X is a noncombustible caulking compound used to fill the annular space around vents, pipes, ducts, cables, and wires at ceiling and floor level in non-rated one and two-family residential construction. Fireblock-X is designed to seal penetrations to resume the integrity of fire blocks within concealed stud wall cavities and prevent the free passage of draft, flame, smoke, and toxic gases.



PART#	STOCK CODE	DESCRIPTION
F4P FIRE BLOCK	0250-8648	F4P RECTORSEAL RS 136- FIRE BLOCK UL APPROVED

### Silicone Clear

Our general-purpose clear silicone is fully waterproof, weatherproof, and won't crack, crumble, or dry out.



PART#	STOCK CODE	DESCRIPTION
F4P SILICONE C	0292-9644	F4P 10FL OZ SILICONE CLEAR

### Silicone Caulk White

Our paintable multi-purpose white silicone caulk is fully waterproof, weatherproof, and won't crack, crumble, or dry out.



PART#	STOCK CODE	DESCRIPTION
F4P SILICONE W	0380-7585	WHITE PAINTABLE LATEX CAULK 10.1 OZ

## CHEMICALS



### Silicone Can

F4P's Silicone Can Sealant makes any job quick and easy. 10 oz.



PART#	STOCK CODE	DESCRIPTION
F4P SILICONE CAN	0544-3788	10FL OZ SILICONE CLEAR

### General Purpose Foam Sealant

F4P's General Purpose Expanding Foam is a ready-to-use polyurethane straw-dispensed foam formulated for filling, insulating, and sealing gaps, cracks, and openings in the interior and exterior of buildings. The multi-purpose formula creates a durable, airtight, and waterproof seal that stops air infiltration, provides high insulation value, and saves time and energy. It has excellent adhesion to most building surfaces, including wood, glass, metal, masonry, and plastic.



PART#	STOCK CODE	DESCRIPTION
F4P FOAM	0307-6110	GENERAL PURPOSE EXPANDING FOAM 12 OZ

### 9" Dripless Caulk Gun

Avoid the mess and waste that standard caulk guns cause with the F4P Dripless Caulk Gun. The tip cutter and sealant puncture tool ensure you have everything you need to keep on caulking.



PART#	STOCK CODE	DESCRIPTION
F4P CAULKGUN	0309-1443	DRIPLESS CAULK GUN WITH CUTTER

## SAFETY GEAR



### Hand Sanitizer

Our hand sanitizers are sold in 2oz and 8oz size options. Perfect to keep around the house or on the go.



PART#	STOCK CODE	DESCRIPTION
F4P SANITIZER-S	0546-7764	HAND SANITIZER 2 OZ
F4P SANITIZER-L	0546-7761	HAND SANITIZER 8 OZ

### F4P Wall Mounted First Aid Kit

Packed with the essentials, these wall-mountable first aid kits are great for your garage workshop.



PART#	STOCK CODE	DESCRIPTION
F4P FAK100	0544-1472	FIRST AID KIT 100PC
F4P FAK228	0544-1478	FIRST AID KIT 228PC



# Tapes

Suggested Products:

**A: F4P TBL** (see page 97)

**F4P**  
FIRST FOR PERFORMANCE®

A

Electrical, packing, and duct tape are just a few of the necessary tapes to have on hand for securing electrical wires or sealing up cardboard boxes for year-round storage.



A

# Tapes

Suggested Products:

A: **F4P PT200** (see page 97)

## TAPES



### Utility Grade Duct Tape

F4P duct tape is made in the USA and is a uniquely soft, high-strength, high-tack adhesive that readily flows across rough and textured surfaces. The improved adhesive is even stronger than ever, providing 20% more shear strength (holding power) than before - perfect for hanging poly sheeting and other demanding applications.



PART#	STOCK CODE	DESCRIPTION
F4P DUCT TAPE	0012-0946	F4P 2" X 60 YARDS DUCT TAPE

### Packing Tape

F4P PT200 Packing tape is perfect to have on hand for general use or to be used to seal up cartons or boxes for shipment.



PART#	STOCK CODE	DESCRIPTION
F4P PT200	0318-8604	2" X 110 YD PREMIUM PACKING TAPE

### Vinyl Electrical Tape

Used to insulate electrical wires and other materials that conduct electricity, F4P's vinyl electrical tape has ultra-tough adhesion capabilities, stands up to the harshest conditions, and is specially designed to protect and insulate with ease.



PART#	STOCK CODE	DESCRIPTION
F4P TBK	0278-9838	F4P ELECTRICAL PVC TAPE 0.007"X3/4"X66' BLK
F4P TBL	0278-9841	F4P ELECTRICAL PVC TAPE 0.007"X3/4"X66' BLU
F4P TBN	0278-9844	F4P ELECTRICAL PVC TAPE 0.007"X3/4"X66' BRN
F4P TGN	0278-9847	F4P ELECTRICAL PVC TAPE 0.007"X3/4"X66' GRN
F4P TGY	0278-9850	F4P ELECTRICAL PVC TAPE 0.007"X3/4"X66' GRY
F4P TOR	0278-9853	F4P ELECTRICAL PVC TAPE 0.007"X3/4"X66' ORN
F4P TPL	0278-9856	F4P ELECTRICAL PVC TAPE 0.007"X3/4"X66' PUR
F4P TRD	0278-9859	F4P ELECTRICAL PVC TAPE 0.007"X3/4"X66' RED
F4P TWH	0278-9862	F4P ELECTRICAL PVC TAPE 0.007"X3/4"X66' WHT
F4P TYW	0278-9865	F4P ELECTRICAL PVC TAPE 0.007"X3/4"X66' YEL

# Connectors & Grounding

Suggested Products:

**A: Slim Wire Nut** (see page 101)

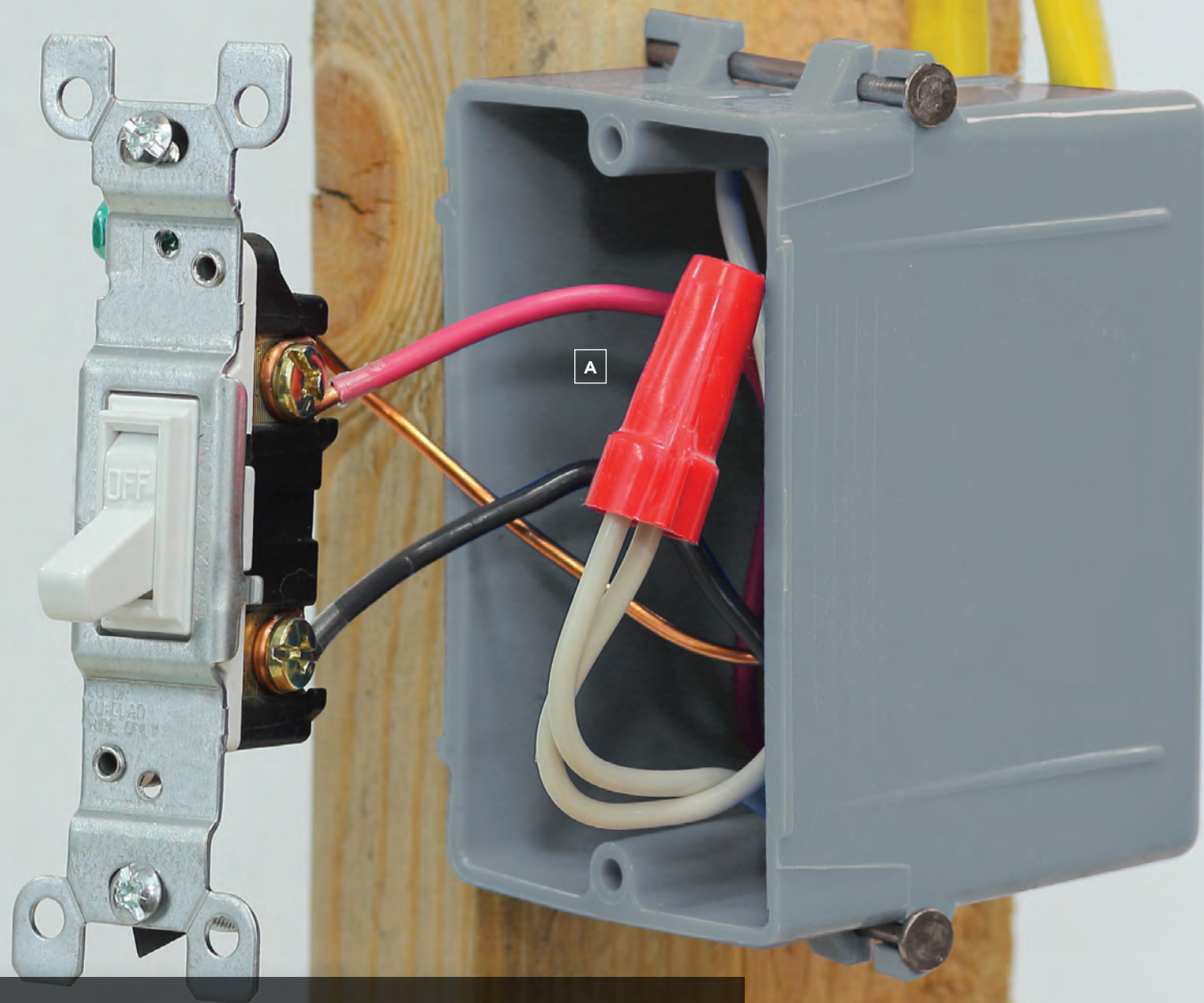
**B: Small Wire Nut** (see page 101)



A

B

F4P Wire Nuts come in a variety of different options to choose from. They're available in several different packaging options for added convenience, including bulk bags, small boxes, large and small jars, and even small count bags.



# Connectors & Grounding

Suggested Products:

**A: N 2000** (see page 101)

## CONNECTORS & GROUNDING



### Slim Wire Nut Box

Our wide variety of slim wire connectors are all UL and CSA listed, RoHS and CQC compliant, and made from high-temperature thermoplastic (resistant up to 221°F). Rated for a maximum of 600 volts for building wire and 1000 volts in fixtures and signs.



PART#	STOCK CODE	DESCRIPTION
N 1000	0214-8096	SLIM JIM WING NUT YELLOW IN 100 BOX
N 2000	0214-8102	SLIM JIM WING NUT RED IN 100 BOX

### Wing Nut Box

Our wide variety of wing wire connectors are all UL and CSA listed, RoHS and CQC compliant, and made from high-temperature thermoplastic (resistant up to 221°F). Rated for a maximum of 600 volts for building wire and 1000 volts in fixtures and signs.



PART#	STOCK CODE	DESCRIPTION
P 1100	0012-2128	WING YELLOW - 100 BOX
P 1200	0012-2134	WING TAN - 100 BOX
P 1300	0012-2140	WING RED - 100 BOX
P 1500	0012-2146	WING GRAY - 50 BOX
P 1700	0012-2152	WING BLUE - 50 BOX
P 9900	0012-2158	WING GREEN - 100 BOX

### Small Wire Nut Box

Our wide variety of small wire connectors are all UL and CSA listed, RoHS and CQC compliant, and made from high-temperature thermoplastic (resistant up to 221°F). Rated for a maximum of 600 volts for building wire and 1000 volts in fixtures and signs.



PART#	STOCK CODE	DESCRIPTION
P 1000	0012-2098	WIRE GRAY SMALL - 100 BOX
P 2000	0012-2104	WIRE BLUE SMALL - 100 BOX
P 3000	0012-2110	WIRE ORANGE SMALL - 100 BOX
P 4000	0012-2116	WIRE YELLOW - 100 BOX
P 6000	0012-2122	WIRE RED - 100 BOX



**Small Wire Connector Bag**

Our wide variety of small wire connectors are all UL and CSA listed, RoHS and CQC compliant, and made from high-temperature thermoplastic (resistant up to 221°F). Rated for a maximum of 600 volts for building wire and 1000 volts in fixtures and signs.



PART#	STOCK CODE	DESCRIPTION
F4P H1004	0301-5348	SMALL HANGHOLE BAG OF 12 SMALL BLUE WIRE NUTS
F4P H2004	0301-5351	SMALL HANGHOLE BAG OF 12 SMALL GRAY WIRE NUTS
F4P H3004	0301-5354	SMALL HANGHOLE BAG OF 12 ORANGE WIRE NUTS
F4P H4004	0301-5357	SMALL HANGHOLE BAG OF 12 YELLOW WIRE NUTS
F4P H6004	0301-5360	SMALL HANGHOLE BAG OF 12 RED WIRE NUTS

**Small Wing Connector Bag**

Our wide variety of small wing wire connectors are all UL and CSA listed, RoHS and CQC compliant, and made from high-temperature thermoplastic (resistant up to 221°F). Rated for a maximum of 600 volts for building wire and 1000 volts in fixtures and signs.



PART#	STOCK CODE	DESCRIPTION
F4P H1104	0301-5363	SMALL HANGHOLE BAG OF 12 YELLOW WING NUTS
F4P H1204	0301-5366	SMALL HANGHOLE BAG OF 12 TAN WING NUTS
F4P H1304	0301-5369	SMALL HANGHOLE BAG OF 12 RED WING NUTS
F4P H1504	0301-5372	SMALL HANGHOLE BAG OF 6 GRAY WING NUTS
F4P H1704	0301-5375	SMALL HANGHOLE BAG OF 6 LARGE BLUE WING NUTS
F4P H9904	0301-5381	SMALL HANGHOLE BAG OF 12 GREEN GROUNDING WING

**Slim Wire Connector Bag**

Our high-temperature wire connectors are all UL and CSA listed, RoHS and CQC compliant, and made from high-temperature thermoplastic (resistant up to 302°F). . Rated for a maximum of 600 volts for building wire and 1000 volts in fixtures and signs.



PART#	STOCK CODE	DESCRIPTION
F4P HN1004	0301-5384	SMALL HANGHOLE BAG OF 12 YELLOW SLIM JIM WIRE NUTS
F4P HN2004	0301-5387	SMALL HANGHOLE BAG OF 12 RED SLIM JIM WIRE NUTS



**Small Jar Wire Nuts**

Our wide variety of small wire connectors are all UL and CSA listed, RoHS and CQC compliant, and made from high-temperature thermoplastic (resistant up to 221°F). Rated for a maximum of 600 volts for building wire and 1000 volts in fixtures and signs.



PART#	STOCK CODE	DESCRIPTION
F4P S1003	0301-5336	SMALL JAR OF 500 SMALL GRAY WIRE NUTS
F4P S2003	0301-5339	SMALL JAR OF 400 SMALL BLUE WIRE NUTS
F4P S3003	0301-5306	SMALL JAR 300 ORANGE WIRE NUTS
F4P S4003	0301-5309	SMALL JAR OF 150 YELLOW WIRE NUTS
F4P S6003	0301-5312	SMALL JAR OF 100 RED WIRE NUTS

**Small Jar Wing Nuts**

Our wide variety of small wing wire connectors are all UL and CSA listed, RoHS and CQC compliant, and made from high-temperature thermoplastic (resistant up to 221°F). Rated for a maximum of 600 volts for building wire and 1000 volts in fixtures and signs.



PART#	STOCK CODE	DESCRIPTION
F4P S1103	0301-5315	SMALL JAR 200 YELLOW WING NUT
F4P S1203	0301-5318	SMALL JAR 175 TAN WING NUT
F4P S1303	0301-5321	SMALL JAR 120 RED WING NUT
F4P S1503	0301-5324	SMALL JAR OF 50 LARGE GRAY WING NUTS
F4P S1703	0301-5327	SMALL JAR 50 BIG BLUE WING NUT
F4P S9903	0301-5330	SMALL JAR 150 GREEN WING NUT

# Fasteners

Suggested Products:

A: **CESDSKIT** (see page 108)

**F4P**  
FIRST FOR PERFORMANCE®

A

F4P offers a variety of fasteners which include anchors, screws, tackle box kits, mounting pads, and zip ties. Never be without the hardware you need to finish the job.



# Fasteners

Suggested Products:

**A: Drywall Screw** (see page 108)

## FASTENERS



### Metal Self-Drilling Drywall Anchor

Also known as "Zip-it" anchors, these self-drilling anchors create their own holes in drywall without tearing, eliminating the need for pilot holes.



PART#	STOCK CODE	DESCRIPTION
CES2346J	0211-0146	100 METAL ZIP IT ANCHOR

### Nylon Self-Drilling Drywall Anchor

Also known as "Zip-it" anchors, these self-drilling anchors create their own holes in drywall without tearing, eliminating the need for pilot holes.



PART#	STOCK CODE	DESCRIPTION
CES2345J	0211-0143	100 NYLON ZIP IT ANCHOR

### Junior Nylon Self-Drilling Drywall Anchor

Also known as "Zip-it" anchors, these self-drilling anchors create their own holes in drywall without tearing, eliminating the need for pilot holes.



PART#	STOCK CODE	DESCRIPTION
CES2350J	0211-0149	100 JR. NYLON ZIP IT ANCHOR

### Junior Metal Self-Drilling Drywall Anchor

Also known as "Zip-it" anchors, these self-drilling anchors create their own holes in drywall without tearing, eliminating the need for pilot holes.

PART#	STOCK CODE	DESCRIPTION
CES2351J	0211-0152	100 JR. METAL ZIP IT ANCHOR

### Plastic Anchor

Also known as a knotting anchor, these conical plug anchors are used for light to medium duty applications. In hollow building materials, the plug knots underneath the surface as the screw is tightened further into the plug.



PART#	STOCK CODE	DESCRIPTION
CES8559J	0211-0197	100 BLUE CONICAL PLASTIC ANCHOR 4-6 X 3/4
CES8569J	0211-0200	100 BLUE CONICAL PLASTIC ANCHOR 8-10 X 7/8
CES8579J	0211-0203	100 BLUE CONICAL PLASTIC ANCHOR 10-12 X 1
CES8589J	0211-0206	100 BLUE CONICAL PLASTIC ANCHOR 14-16 X 1-1/2

## FASTENERS



### Drywall Screw

Sharp angled threads provide excellent holding power and cut into plywood and particleboard without splitting. Screws have a Phillips drive and are threaded at least two-thirds of their length.



PART#	STOCK CODE	DESCRIPTION
CES1DSJ	0210-9693	100 BUGLE PHILLIP COARSE DRYWALL SCREW BLACK 6 X 1
CES18DSJ	0210-9696	100 BUGLE PHILLIP COARSE DRYWALL SCREW BLACK 6 X 1-1/8
CES114DSJ	0210-9699	100 BUGLE PHILLIP COARSE DRYWALL SCREW BLACK 6 X 1-1/4
CES158DSJ	0210-9702	100 BUGLE PHILLIP COARSE DRYWALL SCREW BLACK 6 X 1-5/8
CES2DSJ	0210-9705	100 BUGLE PHILLIP COARSE DRYWALL SCREW BLACK 6 X 2
CES214DSJ	0210-9708	100 BUGLE PHILLIP COARSE DRYWALL SCREW BLACK 8 X 2-1/4
CES212DSJ	0210-9711	100 BUGLE PHILLIP COARSE DRYWALL SCREW BLACK 8 X 2-1/2
CES3DSJ	0210-9714	100 BUGLE PHILLIP COARSE DRYWALL SCREW BLACK 8 X 3

### Hex Masonry Screw

Commonly referred to as "Tapcons", these blue-coated steel fasteners are designed to easily anchor into concrete, brick, and block. They feature a hex head with a slot driver for added flexibility.



PART#	STOCK CODE	DESCRIPTION
CES3802J	0222-6513	100 HEX HEAD MASONRY SCREW (TAPPER) 3/16 X 1-1/4
CES3803J	0250-0359	100 HEX HEAD MASONRY SCREW (TAPPER) 3/16 X 1-3/4
CES3804J	0262-3362	100 HEX HEAD MASONRY SCREW (TAPPER) 3/16 X 2-1/4
CES3805J	0262-3365	100 HEX HEAD MASONRY SCREW (TAPPER) 3/16 X 2-3/4
CES3808J	0240-2124	100 HEX HEAD MASONRY SCREW (TAPPER) 3/16 X 4
CES3902J	0211-0302	100 HEX HEAD MASONRY SCREW (TAPPER) 1/4 X 1-1/4
CES3903J	0211-0305	100 HEX HEAD MASONRY SCREW (TAPPER) 1/4 X 1-3/4
CES3904J	0211-0308	100 HEX HEAD MASONRY SCREW (TAPPER) 1/4 X 2-1/4
CES3905J	0242-2275	100 HEX HEAD MASONRY SCREW (TAPPER) 1/4 X 2-3/4
CES3906J	0255-0921	100 HEX HEAD MASONRY SCREW (TAPPER) 1/4 X 3-1/4

### Drywall Screw Kit

Assortment kit of coarse drywall screws.



PART#	STOCK CODE	DESCRIPTION
CESDSKIT	0257-4720	SCREW ASSORTMENT KIT

## FASTENERS



### Hex Head Plastic Plug Anchor

Also known as a knotting anchor, these conical plug anchors are used for light to medium duty applications. In hollow building materials, the plug knots underneath the surface as the screw is tightened further into the plug.



PART#	STOCK CODE	DESCRIPTION
F4P HEXANC	0009-9625	10X1 HEX HEAD SCREW W/ BLUE PLASTIC PLUGS/100PCS

### Hex Head Plastic Plug Anchor w/ Drill Bit

Also known as a knotting anchor, these conical plug anchors are used for light to medium duty applications. In hollow building materials, the plug knots underneath the surface as the screw is tightened further into the plug.



PART#	STOCK CODE	DESCRIPTION
F4P HEXANC-B	0348-0387	10X1 HEX SCREW + BLUE ANC W/ BIT

### Tackle Box Self-Drilling Drywall Anchor Kit

Also known as "Zip-it" anchors, these self-drilling anchors create their own holes in drywall without tearing, eliminating the need for pilot holes.



PART#	STOCK CODE	DESCRIPTION
F4P NYLZIP	0235-2156	F4P ZIP NYLON ANCHOR KIT - 50 PCS COUNT

### Pan Head Plastic Plug Anchor Kit

Also known as a knotting anchor, these conical plug anchors are used for light to medium duty applications. In hollow building materials, the plug knots underneath the surface as the screw is tightened further into the plug.



PART#	STOCK CODE	DESCRIPTION
F4P PANANC	0009-9628	10X1 PAN HEAD SCREW W/ BLUE PLASTIC PLUGS/100PCS

### Pan Head Plastic Plug Anchor Kit w/ Drill Bit

Also known as a knotting anchor, these conical plug anchors are used for light to medium duty applications. In hollow building materials, the plug knots underneath the surface as the screw is tightened further into the plug.



PART#	STOCK CODE	DESCRIPTION
F4P PANANC-B	0348-0402	10X1 HEX SCREW + BLUE ANC W/ BIT



## FASTENERS



### Zinc Self-Drilling Drywall Anchor Kit

Also known as "Zip-it" anchors, these self-drilling anchors create their own holes in drywall without tearing, eliminating the need for pilot holes.



PART#	STOCK CODE	DESCRIPTION
F4P ZINZIP	0235-2153	F4P ZIP ZINC ANCHOR KIT - 50PCS COUNT

### F4P Storm Kit

Be prepared for the hurricane season with F4P Storm Kit fasteners.



PART#	STOCK CODE	DESCRIPTION
F4P STORM KIT	0533-4402	HURRICANE FASTENER KIT

### Plate Screws

The plate screws are available in three different head colors to match the look of the plate. The heads are beveled at the standard 82°.



PART#	STOCK CODE	DESCRIPTION
CES632X1WPSJ	0211-0329	100 WHITE PLATE SCREW 6/32 X 1
CES632X12WPSJ	0211-0320	100 WHITE PLATE SCREW 6/32 X 1/2
CES632X12APSJ	0211-0323	100 ALMOND PLATE SCREW 6/32 X 1/2
CES632X1IPSJ	0211-0326	100 IVORY PLATE SCREW 6/32 X 1

### Wade Clip

These metal clips are a perfect wire management solution for both furring strip and metal stud applications. These quick, easy-install clips can be installed by hand with no fasteners required, which saves both time and money on the job site.



PART#	STOCK CODE	DESCRIPTION
F4P WC-FS	0595-3515	METAL FERRING STRIP CLIP 100CT BOX
F4P WC	0595-3521	METAL STUD CLIP 100CT BOX

## FASTENERS



### Mounting Pad

With four-sided entry for mounting flexibility and heavy-duty adhesion, our acrylic mounting blocks allow for the attachment of wires via cable ties in a snap.



PART#	STOCK CODE	DESCRIPTION
F4P1MPABLK	0277-7856	F4P 1" MOUNTING PAD ACRYLIC -BLACK 100 PACK
F4P1MPAWH	0277-7859	F4P 1" MOUNTING PAD ACRYLIC -WHITE 100 PACK
F4P3/4MPABLK	0277-7862	F4P 3/4" MOUNTING PAD ACRYLIC -BLACK 100 PACK
F4P3/4MPAWH	0277-7865	F4P 3/4" MOUNTING PAD ACRYLIC -WHITE 100 PACK

### Cable Ties

F4P's high-quality cable ties are made in the USA and plenum rated. A wide variety of sizes and tensile strength combinations are available to fit any need. The design of F4P's pawl (locking mechanism) makes our cable tie superior in strength and allows our products to exceed the required tensile strength by margins of 3 to 4 times greater than industry standards.



PART#	STOCK CODE	DESCRIPTION
F4P04-18B	0276-9300	F4P 4" CABLE TIE 18LBS - BLACK
F4P04-18W	0276-9303	F4P 4" CABLE TIE 18LBS - WHITE
F4P05-40B	0276-9306	F4P 5" CABLE TIE 40LBS - BLACK
F4P05-40W	0276-9309	F4P 5" CABLE TIE 40LBS - WHITE
F4P06-18B	0276-9312	F4P 6" CABLE TIE 18LBS - BLACK
F4P06-18W	0276-9315	F4P 6" CABLE TIE 18LBS - WHITE
F4P07-50B	0276-9318	F4P 7" CABLE TIE 50LBS - BLACK
F4P07-50W	0276-9330	F4P 7" CABLE TIE 50LBS - WHITE
F4P11-50B	0276-9342	F4P 11" CABLE TIE 50LBS - BLACK
F4P11-50W	0276-9348	F4P 11" CABLE TIE 50LBS - WHITE
F4P14-50B	0276-9366	F4P 14" CABLE TIE 50LBS - BLACK
F4P14-50W	0276-9369	F4P 14" CABLE TIE 50LBS - WHITE

# Receptacles

Suggested Products:

**A: USBC15WH** (see page 117)



USB charging receptacles are handy to have in the office, so charging multiple devices is easy and accessible.



# Receptacles

Suggested Products:

A: **GFCI15ST-WH** (see page 115)

## RECEPTACLES



### Self-Test GFCI Receptacle 15A

Applications: Kitchen, Bathroom, Garage, Basement, Laundry Room, Wet Sink, and other Wet Locations.



PART#	STOCK CODE	DESCRIPTION
GFCI15ST-IV	0544-4091	SLF TST GFCI 15A 125V IVORY
GFCI15ST-LA	0544-4094	SLF TST GFCI 15A 125V LIGHT ALMO
GFCI15ST-WH	0544-3560	SLF TST GFCI 15A 125V WHITE

### Self-Test GFCI Receptacle Tamper-Resistant 15A

Applications: Kitchen, Bathroom, Garage, Basement, Laundry Room, Wet Sink, and other Wet Locations.



PART#	STOCK CODE	DESCRIPTION
GFCI15STTR-IV	0544-4100	SLF TST GFCI TR 15A 125V IVORY
GFCI15STTR-LA	0544-4103	SLF TST GFCI WR TR 15A 125V LIGH
GFCI15STTR-WH	0544-3563	SLF TST GFCI TR 15A 125V WHITE

### Self-Test GFCI Tamper/Weather Resistant 15A

Applications: Kitchen, Bathroom, Garage, Basement, Laundry Room, Wet Sink, and other Wet Locations.



PART#	STOCK CODE	DESCRIPTION
GFCI15STTRWR-IV	0544-4109	SLF TST GFCI WR TR 15A 125V IV
GFCI15STTRWR-LA	0544-4112	SLF TST GFCI WR TR 15A 125V LA
GFCI15STTRWR-WH	0544-3566	SLF TST GFCI WR TR 15A 125V WHIT

### Duplex Receptacle

Applications: Bedrooms, Living Rooms, Hallways, Dining Rooms, and other dry locations.



PART#	STOCK CODE	DESCRIPTION
CR15-IV	0288-1698	15A 125V COMM GRADE NEMA 5-15R R
CR15-WH	0288-1701	15A 125V COMM GRADE NEMA 5-15R R

## RECEPTACLES



### Duplex Receptacle

Applications: Bedrooms, Living Rooms, Hallways, Dining Rooms, and other dry locations.



PART#	STOCK CODE	DESCRIPTION
DR15-IV	0289-0386	DPLX RCPT IVORY 15A PUSH IN SIDE
DR15-WH	0277-4862	15A 125V DUPLEX WHT RECPT

### Tamper-Resistant Duplex Receptacle

Applications: Bedrooms, Living Rooms, Hallways, Dining Rooms, and other dry locations. Designed to be tamper-resistant, built-in safety shutters prevent foreign objects from being inserted into the receptacle.



PART#	STOCK CODE	DESCRIPTION
TRDR15-BK	0289-0593	TAMPER RESISTANT DPLX RECEP BLAC
TRDR15-BR	0289-0596	TAMPER RESISTANT DPLX RECEP BROW
TRDR15-IV	0273-6705	TAMPER RESISTANT DUP RECPT IVORY
TRDR15-LA	0277-2846	TAMPER RESISTANT DPLX RCPT LT AL
TRDR15-WH	0273-6708	TAMPER RESISTANT DUP RECPT WHITE

### Tamper-Resistant Decorator Receptacle

Applications: Kitchen, Bathroom, Garage, Basement, Laundry Room, Wet Sink, and other wet locations. Designed to be tamper-resistant, built-in safety shutters prevent foreign objects from being inserted into the receptacle.



PART#	STOCK CODE	DESCRIPTION
TRDRD15-IV	0273-6711	TAMPER RESISTANT DECORA DUP RECP
TRDRD15-LA	0277-2849	TAMPER RESISTANT DECORA DPLX RCP
TRDRD15-WH	0273-6702	TAMPER RESISTANT DECORATOR DUPL

### Tamper/Weather Resistant Duplex Receptacle

Applications: Kitchen, Bathroom, Garage, Basement, Laundry Room, Wet Sink, and other wet locations.



PART#	STOCK CODE	DESCRIPTION
TRWDR15-WH	0293-3340	15A 125V T/R W/R DPLX RCPT 5-15R

## RECEPTACLES



### Receptacle/Dual USB 15A

Applications: Kitchen, Bedroom, Office, Living Rooms, and other locations where you need to charge your USB devices.



PART#	STOCK CODE	DESCRIPTION
USB15BK	0315-2058	15A TR DUP. RCPT/DUAL USB 4.0A 5
USB15BR	0315-2061	15A TR DUP RCPT, DUAL USB 4.0A 5
USB15IV	0315-2070	15A TR DUP RCPT, DUAL USB 4.0A 5
USB15LA	0315-2073	15A TR DUP RCPT, DUAL USB 4.0A 5
USB15WH	0315-2076	15A TR DUP RCPT, DUAL USB 4.0A 5

### Receptacle/Dual USB 20A

Applications: Kitchen, Bedroom, Office, Living Rooms, and other locations where you need to charge your USB devices.



PART#	STOCK CODE	DESCRIPTION
USB20WH	0315-2079	20A TR DUP RCPT, DUAL USB 4.0A 5

### USB Charger Receptacle 4 Port

Applications: Kitchen, Bedroom, Office, Living Rooms, and other locations where you need to charge your USB devices.



PART#	STOCK CODE	DESCRIPTION
USB4WH	0315-2082	4 PORT USB CHARGER, 4.0A 5VDC, 1

### Tamper-Resistant USB Charger Receptacle

Applications: Kitchen, Bedroom, Office, Living Rooms, and other locations where you need to charge your USB devices.



PART#	STOCK CODE	DESCRIPTION
USB15SR-WH	0369-9558	15A TR SGL RCPT, DUAL USB 4.0A 5

### Tamper-Resistant USB Charger Receptacle

Applications: Kitchen, Bedroom, Office, Living Rooms, and other locations where you need to charge your USB devices.



PART#	STOCK CODE	DESCRIPTION
USBC15WH	0587-5080	15A TR DUP RCPT USB A/C 5.4 WH

# Power Devices



## Suggested Products:

**A: FMD1030R-WH** (see page 121)  
Installed behind the dryer unit.



High-quality receptacles and power devices ensure safe operation of appliances and equipment, reducing downtime and ensuring reliable operation.

# Power Devices

## Suggested Products:

**A: FMR1450R-WH** (see page 121)  
Installed behind the range unit.

## POWER DEVICES



### Dryer Receptacle

30A, 3-Wire Dryer Receptacle, Flush Mount



PART#	STOCK CODE	DESCRIPTION
FMD1030R-BK	0276-8259	30A 125/250V 3W FLUSH MNT DRYER
FMD1030R-WH	0276-8262	30A 125/250V 3W FLUSH MNT DRYER

### Dryer Receptacle

30A, 4-Wire Dryer Receptacle, Flush Mount



PART#	STOCK CODE	DESCRIPTION
FMD1430R-BK	0273-5232	30A 125/250V 4W FLUSH MNT DRYER
FMD1430R-WH	0289-1292	30A 125/250V 4W FLUSH MNT DRYER

### Wire Range Receptacle

50A, 3-Wire Range Receptacle, Flush Mount



PART#	STOCK CODE	DESCRIPTION
FMR1050R-BK	0276-8265	50A 125/250V 3W FLUSH MNT RANGE
FMR1050R-WH	0276-8268	50A 125/250V 3W FLUSH MNT RANGE

### Wire Range Receptacle

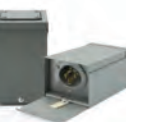
50A, 4-Wire Range Receptacle, Flush Mount



PART#	STOCK CODE	DESCRIPTION
FMR1450R-BK	0273-5238	50A 125/250V 4W FLUSH MNT RANGE
FMR1450R-WH	0289-1295	50A 125/250V 4W FLUSH MNT RANGE

### Generator Power Box

Generator power boxes allow you to keep the generator outside and bring the power inside, preventing dangerous carbon monoxide fumes from entering your home.



PART#	STOCK CODE	DESCRIPTION
GPWRB30	0552-4896	30 AMP PWR INLET BOX
GPWRB50	0552-4899	50 AMP PWR INLET BOX

# Surge Protectors & Weather Proof Covers

Suggested Products:

A: **WP23C** (see page 125)



A

Rain or shine, be prepared and protect your home from the elements with RPP weatherproof covers and surge protectors. Weatherproof covers will ensure outdoor outlets are kept dry, while surge protectors will protect your devices from power outages.



# Surge Protectors & Weather Proof Covers

## Suggested Products:

**A: Surge Protector** (see page 125)  
Installed to the main disconnect to protect appliances.

## SURGE PROTECTORS



### Surge Protector

Protect your appliances and motors from external power surges, like direct lightning strikes, internal surges, and power transitions.



PART#	STOCK CODE	DESCRIPTION
RPP-120/240SPD+	0545-3043	UL LISTED TYPE 1 SPD 120/240VAC
RPP-SPD1ULTRA	0545-3052	UL LISTED TYPE 1 120/240VAC SPD W/ALARM

## WEATHERPROOF COVERS



### Weatherproof Cover Standard

16 installation combinations to accommodate any installation requirements adapters included for duplex, GFCI, decorator, blank, toggle, & Single Hole Openings at 1-1/4", 1-3/8", & 1-9/16", including attached gasket and mounting hardware, can be installed horizontally or vertically depending on application Lockable to fit any standard padlock for added security.



PART#	STOCK CODE	DESCRIPTION
WP13C	0313-3284	1G, 3" DEPTH, STANDARD IN-USE, C
WP23C	0313-3287	2G, 3" DEPTH, STANDARD IN-USE, C

### Weatherproof Cover Extra Duty

Residential In-Use Expandable Single Gang Weatherproof Cover.



PART#	STOCK CODE	DESCRIPTION
WP12RXHG	0434-0223	1G,2"D,RESI,EXP,EXTRA DUTY IN-US
WP12RXHW	0434-0229	1G,2"D,RESI,EXP,EXTRA DUTY IN-US
WP12RXHZ	0434-0235	1G,2"D,RESI,EXP,EXTRA DUTY IN-US



# Cords & Cables

Suggested Products:

**A: Patch cord CAT6** (see page 130)



From dryer cords & data cables, RPP offers a multitude of cords and cables to be used around the home.



A

# Cords & Cables

Suggested Products:

A: **WH GC 20100** (see page 129)

## CORDS



### Appliance Cords

Cord lengths available in 3ft, 6ft, & 9ft to accommodate connection in most spaces. UL approved for resistance to moisture.



PART#	STOCK CODE	DESCRIPTION
WH AP14/3-6A	0279-7515	WH APLCORD SJTW14/3 ANGLE PLUG 6
WH AP14/3-6S	0279-7518	WH APLCORD SJTW14/3 STRAIGHT PLU
WH AP14/3-9S	0279-7521	WH APLCORD SJTW14/3 STRAIGHT PLU
WH AP16/3-3S	0279-7524	WH APLCORD SJTW16/3 STRAIGHT PLU
WH AP16/3-6A	0279-7527	WH APLCORD SJTW16/3 ANGLE PLUG 6
WH AP16/3-6S	0279-7530	WH APLCORD SJTW16/3 STRAIGHT PLU
WH AP16/3-9S	0279-7533	WH APLCORD SJTW16/3 STRAIGHT PLU

### Dryer Cords

Cord lengths available in 4ft and 6ft to accommodate connection in most laundry spaces. Works with most standard, freestanding electric dryers.



PART#	STOCK CODE	DESCRIPTION
WH DC4/3	0279-7536	WH DRYCORD SRDT10/3 30A 4FT3PIN
WH DC4/4	0279-7539	WH DRYCORD SRDT10/4 30A 4FT4PIN
WH DC6/3	0279-7542	WH DRYCORD SRDT10/3 30A 6FT3PIN
WH DC6/4	0279-7545	WH DRYCORD SRDT10/4 30A 6FT4PIN

### Generator Cords

Quick & convenient way to get additional cord length between the generator and transfer switch.



PART#	STOCK CODE	DESCRIPTION
WH GC 2010	0389-2116	20A 10FT GENERATOR CORD SET
WH GC 20100	0389-2128	20A 100FT GENERATOR CORD SET
WH GC 2020	0389-2119	20A 20FT GENERATOR CORD SET
WH GC 2050	0389-2125	20A 50FT GENERATOR CORD SET
WH GC 3010	0389-2131	30A 10FT GENERATOR CORD SET
WH GC 30100	0389-2143	30A 100FT GENERATOR CORD SET
WH GC 3020	0389-2134	30A 20FT GENERATOR CORD SET
WH GC 3050	0389-2140	30A 50FT GENERATOR CORD SET
WH GC 5010	0575-7774	50A 10FT GEN CORD SET (14-50 + C
WH GC 5020	0575-7783	50A 20FT GEN CORD SET (14-50 + C
WH GC 5030	0575-7777	50A 30FT GEN CORD SET (14-50 + C
WH GC 5050	0575-7780	50A 50FT GEN CORD SET (14-50 + C

## CABLE



### Data Cable

RPP Data Cable meets all TIA/EIA standards.



PART#	STOCK CODE	DESCRIPTION
WC CAT5E350BB	0009-0484	WC CAT5E 350MHZ BLUE CABLE 1000FT BOX
WC CAT6550BB	0261-6807	4PR BLUE CAT 6 CABLE-1000FT BOX 550MHZ

### Patch Cord

Patch Cord connects two electronic or optical devices to each other for signal routing.



PART#	STOCK CODE	DESCRIPTION
PC5EBL01SL	0393-1320	PATCH CORD, CAT5E, BLUE, 1FT, SNAGLESS
PC5EBL05SL	0393-1326	PATCH CORD, CAT5E, BLUE, 5FT, SNAGLESS
PC5EBL07SL	0393-1329	PATCH CORD, CAT5E, BLUE, 7FT, SNAGLESS
PC5EBL15SL	0393-1332	PATCH CORD, CAT5E, BLUE, 15FT, SNAGLESS
PC5EBL25SL	0393-1338	PATCH CORD, CAT5E, BLUE, 25FT, SNAGLESS
PC6BL01SL	0393-1344	PATCH CORD, CAT6, BLUE, 1FT, SNAGLESS
PC6BL15SL	0393-1380	PATCH CORD, CAT6, BLUE, 15FT, SNAGLESS
PC6BL25SL	0393-1386	PATCH CORD, CAT6, BLUE, 25FT, SNAGLESS

### Coax Cable

RG6 is commonly used for digital HDTV, CATV, satellite television, and outdoor television antennas.



PART#	STOCK CODE	DESCRIPTION
WC RG6BK	0278-9379	WC COAX CABLE 60%RG6 UL BLK IN PULL BOX
WC RG6BK-REEL	0253-7334	RG6U/UL COAXCABLE60% BLK WOODEN REEL BOX
WC RG6WH	0284-6775	WC COAX CABLE 60%RG6 UL WHT IN PULL BOX
WC RG6WH-REEL	0253-7337	RG6U/UL COAXCABLE60% WHT WOODEN REEL BOX
RG 6 QUAD BLK	0240-7029	RG 6 QUAD SHIELD COAX BLACK
RG 6 QUAD WHT	0244-1964	RG 6 QUAD SHEILD COAX WHITE

## CABLE



### Thermostat Cable

Ideal for heating and air conditioning, can also be used for bell and alarm systems.



PART#	STOCK CODE	DESCRIPTION
WC TSTAT18/2-500	0315-0996	18/2 THERMOSTAT WIRE, 500FT REEL, BROWN
WC TSTAT18/3-500	0315-1002	18/3 THERMOSTAT WIRE, 500FT REEL, BROWN
WC TSTAT18/4-500	0315-1035	18/4 THERMOSTAT WIRE, 500FT REEL, BROWN
WC TSTAT18/5-250	0315-1170	18/5 THERMOSTAT WIRE, 250FT REEL, BROWN
WC TSTAT18/6-250	0315-1179	18/6 THERMOSTAT WIRE, 250FT. REEL, BROWN
WC TSTAT18/8-250	0315-1182	18/8 THERMOSTAT WIRE, 250FT. REEL, BROWN
WC TSTAT18/10-250	0345-9177	18/10 THERMOSTAT, 250FT REEL, BROWN
WC TSTAT20/2-500	0315-1185	20/2 THERMOSTAT WIRE, 500FT REEL, BROWN
WC TSTAT18/2-500WH	0345-9180	18/2 THERMOSTAT WIRE, 500FT REEL, WHITE
WC TSTAT18/3-500WH	0345-9183	18/3 THERMOSTAT WIRE, 500FT REEL, WHITE
WC TSTAT18/4-500WH	0345-9186	18/4 THERMOSTAT WIRE, 500FT REEL, WHITE
WC TSTAT18/5-250WH	0345-9189	18/5 THERMOSTAT WIRE, 250FT REEL, WHITE
WC TSTAT18/6-250WH	0345-9192	18/6 THERMOSTAT WIRE, 250FT REEL, WHITE
WC TSTAT18/8-250WH	0345-9195	18/8 THERMOSTAT WIRE, 250FT REEL, WHITE
WC TSTAT18/10-250WH	0363-8112	18/10 THERMOSTAT, 250FT REEL, WHITE
WC TSTAT20/2-500WH	0345-9198	20/2 THERMOSTAT WIRE, 500FT REEL, WHITE



# RESIDENTIAL PRODUCT GUIDE

If you have any questions or concerns,  
feel free to reach out to us.

Call Customer Service  
TAMCO Customer Service  
772.878.4944



#### AIR-TIGHT

The fixture is designed to prevent airflow through the ceiling to save on heating and air conditioning costs. Tested and certified to be Air-Tight compliant under ATM-E283.



#### DAMP LOCATION

The fixture is listed to be installed in damp locations.



#### DIMMABLE

The fixture brightness can be adjusted using a compatible dimmer.



#### IC-RATED

The fixture is designed to be installed in insulated ceilings and can be in direct contact with insulation materials.



#### LED

The fixture uses LED technology.



#### WET LOCATION

The fixture is listed to be installed in wet locations.



#### COLD LOCATION

The fixture is designed with either an internal thermal heater or a high-capacity battery to allow it to be installed in freezers or cold weather applications.



#### IP65 RATING

The fixture is listed for protection from full immersion in water.



#### YEAR WARRANTY

The fixture is guaranteed for the number of year(s) shown, starting from the date of purchase against any mechanical or manufacturing defects.



#### PHOTO CELL

The fixture is integrated photocell with ON/OFF switch.



#### BLUETOOTH

Bluetooth is a short-range wireless technology standard that is used for exchanging data between fixed and mobile devices over short distances and building personal area networks.



#### COLOR SELECTIVE

The fixture is color temperature selectable.



#### WATTAGE SELECTIVE

The fixture is wattage selectable.



#### RGBW TECHNOLOGY

Color-changing integrated light source.



#### 2HR FIRE RATED

Fixture is rated for 2HR in case of fire.



#### 120-277 MULTI-VOLTAGE

The fixture has a 120-277 multi-voltage.



#### UL LISTED

The lamp is tested to the relevant UL standards and achieved a UL listing.



#### CSA

Indicates that the product was tested and has met the certification requirements for electrical, plumbing, and/or mechanical products.



#### ETL LISTED®

The fixture is tested to the relevant ETL standard in the United States and achieved an ETL listing.



#### ROHS

Restriction of Hazardous Substances in Electrical and Electronic Equipment (RoHS) EU rules restrict the use of hazardous substances in electrical and electronic equipment to protect the environment and public health.



#### ENERGY STAR

Energy Star is a program run by the U.S. Environmental Protection Agency and the U.S. Department of Energy that promotes energy efficiency.



#### ASSEMBLED IN AMERICA

The fixture has some components that are assembled in the USA.

**TAMLITE**  
LIGHTING

[www.TAMLITEUSA.com](http://www.TAMLITEUSA.com)

**ADDVENT**

[www.TAMLITEUSA.com](http://www.TAMLITEUSA.com)

**FUSION**  
LAMPS

[www.FUSION-LAMPS.com](http://www.FUSION-LAMPS.com)

**F4P**  
DESIGN PERFORMANCE

[www.F4P-USA.com](http://www.F4P-USA.com)

**RPP**

[www.RPP-USA.com](http://www.RPP-USA.com)

**CENTAUR**  
ELECTRICAL INSTALLATION

[www.CENTAURINSTALLATION.com](http://www.CENTAURINSTALLATION.com)

All our products are available exclusively  
at City Electric Supply.

Visit [www.cityelectricsupply.com](http://www.cityelectricsupply.com) to find a branch near you.

**TAMCO**

11675 TOM MACKIE BLVD.  
PORT ST. LUCIE, FL 34987  
P. 772.878.4944

[www.TAMCOGROUP.com](http://www.TAMCOGROUP.com)



1 90010 65072 9



0615-6981

Printed in **USA**