

TAMCO

HVAC  
GUIDE





## Definite Purpose Contactors

Definite Purpose Contactors are electronically-controlled switches designed for switching a power circuit. Available in 1.5 Pole, 2 Pole, 3 Pole, and 4 Pole.



1.5 Pole



2 Pole



3 Pole



4 Pole

### 1.5 Pole

Part #	Stock Code	Description
MDP20A-1.5-24	0425-0493	20A RATED - 24V AC COIL
MDP20A-1.5-120	0425-0496	20A RATED- 120V AC COIL
MDP20A-1.5-208/240	0425-0499	20A RATED- 208/240V AC COIL
MDP20A-1.5-277	0425-0502	20A RATED- 277V AC COIL
MDP25A-1.5-24	0425-0505	25A RATED- 24V AC COIL
MDP25A-1.5-120	0425-0508	25A RATED- 120V AC COIL
MDP25A-1.5-208/240	0425-0511	25A RATED- 208/240V AC COIL
MDP25A-1.5-277	0425-0514	25A RATED- 277V AC COIL
MDP30A-1.5-24	0425-0517	30A RATED- 24V AC COIL
MDP30A-1.5-120	0425-0520	30A RATED- 120V AC COIL
MDP30A-1.5-208/240	0425-0523	30A RATED- 208/240V AC COIL
MDP30A-1.5-277	0425-0526	30A RATED- 277V AC COIL
MDP40A-1.5-24	0425-0529	40A RATED- 24V AC COIL
MDP40A-1.5-120	0425-0532	40A RATED- 120V AC COIL
MDP40A-1.5-208/240	0425-0535	40A RATED- 208/240V AC COIL
MDP40A-1.5-277	0425-0538	40A RATED- 277V AC COIL

### 2 Pole

Part #	Stock Code	Description
MDP20A-2P-24	0425-0541	20A RATED - 24V AC COIL
MDP20A-2P-120	0425-0544	20A RATED - 120V AC COIL
MDP20A-2P-208/240	0425-0547	20A RATED - 208/240V AC COIL
MDP20A-2P-277	0425-0550	20A RATED - 277V AC COIL
MDP25A-2P-24	0425-0553	25A RATED - 24V AC COIL
MDP25A-2P-120	0425-0898	25A RATED - 120V AC COIL
MDP25A-2P-208/240	0425-0895	25A RATED - 208/240V AC COIL
MDP25A-2P-277	0425-0892	25A RATED - 277V AC COIL
MDP30A-2P-24	0425-1858	30A RATED - 24V AC COIL
MDP30A-2P-120	0425-0889	30A RATED - 120V AC COIL
MDP30A-2P-208/240	0425-0886	30A RATED - 208/240V AC COIL
MDP30A-2P-277	0425-0883	30A RATED - 277V AC COIL
MDP40A-2P-24	0425-1855	40A RATED - 24V AC COIL
MDP40A-2P-120	0425-0880	40A RATED - 120V AC COIL
MDP40A-2P-208/240	0425-0877	40A RATED - 208/240V AC COIL
MDP40A-2P-277	0425-0874	40A RATED - 277V AC COIL

### 3 Pole

Part #	Stock Code	Description
MDP20A-3P-24	0425-0871	20A RATED - 24V AC COIL
MDP20A-3P-120	0425-0868	20A RATED - 120V AC COIL
MDP20A-3P-208/240	0425-0865	20A RATED - 208/240V AC COIL
MDP20A-3P-277	0425-0862	20A RATED - 277V AC COIL
MDP25A-3P-24	0425-0859	25A RATED - 24V AC COIL
MDP25A-3P-120	0425-0856	25A RATED - 120V AC COIL
MDP25A-3P-208/240	0425-0853	25A RATED - 208/240V AC COIL
MDP25A-3P-277	0425-0850	25A RATED - 277V AC COIL
MDP30A-3P-24	0425-0847	30A RATED - 24V AC COIL
MDP30A-3P-120	0425-0844	30A RATED - 120V AC COIL
MDP30A-3P-208/240	0425-0841	30A RATED - 208/240V AC COIL
MDP30A-3P-277	0425-0838	30A RATED - 277V AC COIL
MDP40A-3P-24	0425-0835	40A RATED - 24V AC COIL
MDP40A-3P-120	0425-0832	40A RATED - 120V AC COIL
MDP40A-3P-208/240	0425-0829	40A RATED - 208/240V AC COIL
MDP40A-3P-277	0425-0826	40A RATED - 277V AC COIL
MDP50A-3P-24	0425-0823	50A RATED - 24V AC COIL
MDP50A-3P-120	0425-1852	50A RATED - 120V AC COIL
MDP50A-3P-208/240	0425-0820	50A RATED - 208/240V AC COIL
MDP50A-3P-277	0425-0817	50A RATED - 277V AC COIL
MDP60A-3P-24	0425-0814	60A RATED - 24V AC COIL
MDP60A-3P-120	0425-0811	60A RATED - 120V AC COIL
MDP60A-3P-208/240	0425-0808	60A RATED - 208/240V AC COIL
MDP60A-3P-277	0425-0805	60A RATED - 277V AC COIL
MDP75A-3P-24	0425-0802	75A RATED - 24V AC COIL
MDP75A-3P-120	0425-0799	75A RATED - 120V AC COIL
MDP75A-3P-208/240	0425-0796	75A RATED - 208/240V AC COIL
MDP75A-3P-277	0425-0793	75A RATED - 277V AC COIL
MDP90A-3P-24	0425-0556	90A RATED - 24V AC COIL
MDP90A-3P-120	0425-0568	90A RATED - 120V AC COIL
MDP90A-3P-208/240	0425-0562	90A RATED - 208/240V AC COIL
MDP90A-3P-277	0425-0565	90A RATED - 277V AC COIL

### 4 Pole

Part #	Stock Code	Description
MDP25A-4P-24	0425-0790	25A RATED - 24V AC COIL
MDP25A-4P-120	0425-0787	25A RATED - 120V AC COIL
MDP25A-4P-208/240	0425-0784	25A RATED - 208/240V AC COIL
MDP25A-4P-277	0425-0781	25A RATED - 277V AC COIL
MDP30A-4P-24	0425-0778	30A RATED - 24V AC COIL
MDP30A-4P-120	0425-0574	30A RATED - 120V AC COIL
MDP30A-4P-208/240	0425-0775	30A RATED - 208/240V AC COIL
MDP30A-4P-277	0425-0772	30A RATED - 277V AC COIL
MDP40A-4P-24	0425-0571	40A RATED - 24V AC COIL
MDP40A-4P-120	0425-0583	40A RATED - 120V AC COIL
MDP40A-4P-208/240	0425-0577	40A RATED - 208/240V AC COIL
MDP40A-4P-277	0425-0580	40A RATED - 277V AC COIL

## AC Motors

AC Motors are a practical and efficient solution to powering a range of applications.

### Features:

- Horsepower: 1/4, 1/3, 1/2 available
- RPM: 825-1075RPM
- MFD: 5-10MFD
- Amperage: 1.7-2.85A



Part #	Stock Code	Description
<b>ACM1/3CF-MAX</b>	0582-4203	1/3HP 208-230V 1075RPM 1SP 1.95-1.8A 7.5MFD
<b>ACM1/3CF</b>	0582-4227	1/3HP 208-230V 825RPM 2SP 2.2-1.9A 10MFD
<b>ACM1/4CF-1075</b>	0582-4197	1/4HP 208-230V 1075RPM 1SP 1.7A 5MFD
<b>ACM1/3CF-208/230</b>	0582-4200	1/3HP 208-230V 1075RPM 1SP 2.4A 7.5MFD
<b>ACM1/3DDB-208/230</b>	0582-4212	1/3HP 208-230V 1075RPM 3SP 2.2A 5MFD
<b>ACM1/2DDB-MAX</b>	0582-4206	1/2HP 208-230V 1075RPM 4SP 2.85-2.65A 10MFD

## Start Capacitors

MCG Start Capacitors are used to briefly increase motor starting torque. These run capacitors are offered in a wide variety of options.

### Features:

- Voltage: 125-330V available
- MFD Ranges from 161-850MFD



Part #	Stock Code	Description
<b>AMSY161/125-252</b>	0576-5958	START CAP 161-193 MFD 125V
<b>AMSY161/330-252</b>	0576-5961	START CAP 161-193 MFD 330V
<b>AMSY108/250-252</b>	0576-5964	START CAP 108-130 MFD 250V
<b>AMSY88/250-252</b>	0576-5970	START CAP 88-108 MFD 250V
<b>AMSY216/250-252</b>	0576-5973	START CAP 216-259 MFD 250V
<b>AMSY124/250-252</b>	0576-5976	START CAP 124-149 MFD 250V
<b>AMSY189/125-252</b>	0576-5979	START CAP 189-227 MFD 125V
<b>AMSY270/330-252</b>	0576-5982	START CAP 270-324 MFD 330V
<b>AMSY108/125-252</b>	0576-5985	START CAP 108-130 MFD 125V
<b>AMSY270/250-252</b>	0576-5988	START CAP 270-324 MFD 250V
<b>AMSY708/125-252</b>	0576-5991	START CAP 708-850 MFD 125V

## Run Capacitors

Run Capacitors are designed to give units extra storage for energy.

### Features:

- 370V or 440V available
- Oval case or round case available



Oval case

Round case

Part #	Stock Code	Description
<b>AMRY040V370-151</b>	0425-5563	4(MFD) 370V OVAL CASE RUN CAP
<b>AMRY050R370-151</b>	0425-5629	5(MFD) 370V ROUND CASE RUN CAP
<b>AMRY050R440-151</b>	0425-5641	5(MFD) 440V ROUND CASE RUN CAP
<b>AMRY050V370-151</b>	0425-5566	5(MFD) 370V OVAL CASE RUN CAP
<b>AMRY050V440-151</b>	0425-5599	5(MFD) 440V OVAL CASE RUN CAP
<b>AMRY060V370-151</b>	0425-5569	6(MFD) 370V OVAL CASE RUN CAP
<b>AMRY075R370-151</b>	0425-5632	7.5(MFD) 370V ROUND CASE RUN CAP
<b>AMRY075R440-151</b>	0425-5644	7.5(MFD) 440V ROUND CASE RUN CAP
<b>AMRY075V370-151</b>	0425-5572	7.5(MFD) 370V OVAL CASE RUN CAP
<b>AMRY075V440-151</b>	0425-5602	7.5(MFD) 440V OVAL CASE RUN CAP
<b>AMRY100R370-151</b>	0425-5635	10(MFD) 370V ROUND CASE RUN CAP
<b>AMRY100R440-151</b>	0425-5680	10(MFD) 440V ROUND CASE RUN CAP
<b>AMRY100V370-151</b>	0425-5575	10(MFD) 370V OVAL CASE RUN CAP
<b>AMRY100V440-151</b>	0425-5605	10(MFD) 440V OVAL CASE RUN CAP
<b>AMRY125R370-151</b>	0425-5638	12.5(MFD) 370V ROUND CASE RUN CAP
<b>AMRY125R440-151</b>	0425-5683	12.5(MFD) 440V ROUND CASE RUN CAP
<b>AMRY125V370-151</b>	0425-5578	12.5(MFD) 370V OVAL CASE RUN CAP
<b>AMRY150R370-151</b>	0425-5650	15(MFD) 370V ROUND CASE RUN CAP
<b>AMRY150R440-151</b>	0425-5686	15(MFD) 440V ROUND CASE RUN CAP
<b>AMRY150V370-151</b>	0425-5581	15(MFD) 370V OVAL CASE RUN CAP
<b>AMRY150V440-151</b>	0425-5608	15(MFD) 440V OVAL CASE RUN CAP
<b>AMRY200R370-151</b>	0425-5653	20(MFD) 370V ROUND CASE RUN CAP
<b>AMRY200R440-151</b>	0425-5689	20(MFD) 440V ROUND CASE RUN CAP
<b>AMRY200V370-151</b>	0425-5584	20(MFD) 370V OVAL CASE RUN CAP
<b>AMRY200V440-151</b>	0425-5611	20(MFD) 440V OVAL CASE RUN CAP
<b>AMRY250R370-151</b>	0425-5656	25(MFD) 370V ROUND CASE RUN CAP
<b>AMRY250R440-151</b>	0425-5692	25(MFD) 440V ROUND CASE RUN CAP
<b>AMRY250V370-151</b>	0425-5587	25(MFD) 370V OVAL CASE RUN CAP
<b>AMRY250V440-151</b>	0425-5614	25(MFD) 440V OVAL CASE RUN CAP
<b>AMRY300R370-151</b>	0425-5659	30(MFD) 370V ROUND CASE RUN CAP
<b>AMRY300R440-151</b>	0425-5695	30(MFD) 440V ROUND CASE RUN CAP
<b>AMRY300V370-151</b>	0425-5590	30(MFD) 370V OVAL CASE RUN CAP

Part #	Stock Code	Description
AMRY300V440-151	0425-5617	30(MFD) 440V OVAL CASE RUN CAP
AMRY350D050R440-151	0425-5719	35/5(MFD) 440V ROUND CASE RUN CAP
AMRY350R370-151	0425-5662	35(MFD) 370V ROUND CASE RUN CAP
AMRY350R440-151	0425-5698	35(MFD) 440V ROUND CASE RUN CAP
AMRY350V370-151	0425-5593	35(MFD) 370V OVAL CASE RUN CAP
AMRY350V440-151	0425-5620	35(MFD) 440V OVAL CASE RUN CAP
AMRY400R370-151	0425-5665	40(MFD) 370V ROUND CASE RUN CAP
AMRY400R440-151	0425-5701	40(MFD) 440V ROUND CASE RUN CAP
AMRY400V370-151	0425-5596	40(MFD) 370V OVAL CASE RUN CAP
AMRY400V440-151	0425-5623	40(MFD) 440V OVAL CASE RUN CAP
AMRY450R370-151	0425-5668	45(MFD) 370V ROUND CASE RUN CAP
AMRY450R440-151	0425-5704	45(MFD) 440V ROUND CASE RUN CAP
AMRY450V440-151	0425-5626	45(MFD) 440V OVAL CASE RUN CAP
AMRY500R370-151	0425-5671	50(MFD) 370V ROUND CASE RUN CAP
AMRY500R440-151	0425-5707	50(MFD) 440V ROUND CASE RUN CAP
AMRY550D050V440-151	0425-5716	55/5(MFD) 440V OVAL CASE RUN CAP
AMRY550R440-151	0425-5710	55(MFD) 440V ROUND CASE RUN CAP
AMRY600R440-151	0425-5713	60(MFD) 440V ROUND CASE RUN CAP
AMRY600V370-151	0425-5674	60(MFD) 370V OVAL CASE RUN CAP
AMRY700R370-151	0425-5677	70(MFD) 370V ROUND CASE RUN CAP
AMRY800R370-151	0425-5647	80(MFD) 370V ROUND CASE RUN CAP

## Motor Starters

Motor Starters feature an extensive line of products ideal for HVAC applications. Categories include Direct On Line Starters, Manual Motor Starters, Variable Frequency Drives, and Smart Starters. A variety of Motor Starters are available as well as custom-built packages.



### Manual Motor Starters

- Enclosures
- Enclosure Adapter
- Undervoltage Release
- Aux Contacts
- Emergency Stop Button
- Door Disconnects
- Shunt Release

### Variable Frequency Drives

- Precision Electrical Device
- Conduit Kit
- Option Board
- Remote Keypad
- Braking Chopper Units

### Direct On Line Starters

- Enclosed Non-Reversing
- Enclosed Reversing
- Thermal Overload Relays
- Quick Kits

### Smart Starters

- Non-Combo Smart Starters
- Combo Smart Starters

## AC Disconnects

AC Disconnects offer a safe and easy way to disconnect power to AC units, as needed.

### Features:

- Metal or plastic enclosure options
- 60A non-fused pullout available



MAC-DNS60



MAC-DNP60

Part #	Stock Code	Description
MAC-DNP60	0427-5870	PLASTIC ENCLOSURE - 60A NON-FUSED PULLOUT
MAC-DNS60	0427-5873	METAL ENCLOSURE - 60A NON-FUSED PULLOUT

## VFDs - Variable Frequency Drives

### G100

A compact solution for low HP applications, up to 10HP. The G100 is small in stature but big on features.

### Features:

- Built-in potentiometer, making for easy speed adjustment

### M100

A series in the Micro Drive line for single-phase input applications, made for very compact areas.

### Features:

- Compact in size
- Din rail mountable
- Built-in potentiometer, making for easy speed adjustment



### H100

A full-featured drive line, the H100 is focused on user-friendly keypads and easy-to-install controls designed for the HVAC market.

### Features:

- From 0.5HP up to 800HP
- Environmentally-friendly, energy-reducing focusing drive for HVAC and water treatment facilities

### SP100

Built around the H100 drive, the SP100 line is available in ready-to-go packages with a built-in bypass in a slim body. This will take up much less space than the standard drive with bypass.

### Features:

- Built-in bypass

### S100

The S100 is designed for applications demanding performance of up to 200% starting torque at 0.5 Hz.

### Features:

- Available up to 125HP in performance-based, OEM-driven VFD standard configuration
- Also available in NEMA 4X version up to 30HP





## Premium Grade Duct Tape

With a combination of increased strength and flexible conformability, Premium Grade Duct Tape is excellent for general repairs, bundling of heavy materials, and plumbing applications.

### Features:

- Aggressive adhesion to smooth and rough surfaces
- Resists twisting and curling
- Great balance of strength and conformability

Part #	Stock Code
F4P DUCT PLUS	0312-9861



## Professional Grade Duct Tape

Formulated to be the toughest tape on the market, Professional Grade Duct Tape is 12mm thick with 70 oz/inch adhesion power.

### Features:

- Heavy-duty repair and maintenance
- Extreme adhesion and holding power
- Long-term, moisture-resistant bonds

Part #	Stock Code
F4P DUCT PRO	0312-9864



## Utility Grade Duct Tape

Utility Grade Duct Tape has a uniquely soft, high-strength, high-tack adhesive that readily flows across rough and textured surfaces. Perfect for demanding applications.

### Features:

- Low VOC
- Tested in accordance with UL 723
- Moisture resistant

Part #	Stock Code
F4P DUCT TAPE	0012-0946



## Aluminum Foil Tape

Aluminum Foil Tape is used for sealing irregular and fibrous ductwork, seaming fabricated metals, and sealing leaks and cracks in high-demand applications. Best for vapor sealing.

### Features:

- Superior conformability
- Resists flame, moisture, weather, UV degradation, some chemicals, water vapor, and smoke transmission
- Acts as a vapor barrier to ensure the integrity of the insulation system

Part #	Stock Code
ALUFOIL	0256-4325



## PVC Electrical Tape

Professional Grade PVC Electrical Tape surpasses all industry standards in adhesion, elasticity, and weather resistance. Its anti-abrasive, rubber-based adhesive is resistant to weather/UV, moisture, acid, and alkali.

### Features:

- Flame retardant and self-extinguishing
- UV/sunlight resistant
- Higher break elongation
- Tensile strength 32 N/cm
- Min. temp.: 0.4° F | -18 °C
- Max. Temp: 221° F | 105 °C

Part #	Stock Code
F4P TBK PRO	0300-1662



## Glass Cloth Tape

Glass Cloth Tape provides heat-stabilized insulation for applications where resistance to high temperature and high mechanical strength is required.

### Features:

- 1/2" and 3/4" options available
- Ideal for motor leads, switches, controls, and other hot spots
- Flexible to withstand expansion and contraction
- Extreme adhesion strength
- Conforms well to irregular shapes

Part #	Stock Code
F4P GCT050	0314-4219
F4P GCT075	0314-4222



## Electrical Degreaser

Electrical Degreaser is a non-flammable, fast-evaporating cleaner that penetrates instantly to remove dirt, oil, grease, wax, and other foreign materials that can decrease the life of electrical components and cause costly downtime.

### Features:

- Biodegradable, non-toxic
- Non-flammable, non-corrosive
- Leaves no residue

Part #	Stock Code
F4P DEGREASER	0321-3363



## Contact Cleaner & Protectant

Contact Cleaner & Protectant quickly cleans and removes grease, dust, and oxidation from electrical equipment. It also creates a light barrier to guard from corrosion.

### Features:

- Non-flammable
- Eliminates noise due to dust and dirt
- Low conductivity

Part #	Stock Code
F4P CONTACT	0321-3360



## Rust Crusher

Rust Crusher is a fast-acting product that quickly loosens rust while penetrating grease and dirt. Its light barrier displaces moisture and acts as a corrosion preventative.

### Features:

- Non-flammable propellant
- Will not harm painted surfaces
- Pleasant vanilla scent

Part #	Stock Code
F4P RUST CRUSHER	0339-6807



## Fireblocking Foam Sealant

Fireblocking Foam Sealant is a ready-to-use, polyurethane, expanding foam for filling, insulating, and sealing the annular space around wires, vents, pipes, ducts, and other mechanical items. It penetrates top/sill plates and similar openings in Type V residential construction.

### Features:

- Easily identifiable orange color
- Quick and convenient
- Straw included

Part #	Stock Code
F4P FIRE FOAM	0303-3777



## High Temperature Wire Nuts

The black thermoplastic shell of High Temperature Wire Nuts is specially designed to withstand the extreme heat build-up commonly found in high-wattage light fixtures and signs.

### Features:

- UL listed
- Available in two packaging options: 500 ct bulk bag and 200 ct small jar

Part #	Stock Code
F4P 7001H	0303-3621
F4P 7003H	0305-2224



## Crimp Terminal Kit

Crimp Terminal Kit offers a large range of UL listed, RoHS compliant, nylon-coated crimp terminals. This handy kit can cover many applications. All are rated for 600V and at temperatures up to 221° F (105° C).

### Features:

- Nylon coating provides superior durability over vinyl
- Convenient kit packaging covers many applications in one box

Part #	Stock Code
F4P CRIMP KIT	0303-7152



## Commercial Grade Fire Caulk

Commercial Grade Fire Caulk is a UL Classified sealant designed to withstand flames for up to two hours. It's used to fill and seal the annular space around vents, pipes, ducts, cables, and wires. It prevents the free passage of drafts, flames, smoke, and toxic gases.

### Features:

- Expands when heated
- Applies smooth, consistent paste
- Cures to a tough, rubbery solid
- Red color

Part #	Stock Code
F4P FIRE STOP 814 +	0214-6959



## Residential Grade Fire Caulk

Residential Grade Fire Caulk is a sealant designed to withstand flames for up to two hours. It's used to fill and seal the annular space around vents, pipes, ducts, cables, and wires at ceiling and floor levels in non-rated one and two-family residential construction. It prevents the free passage of drafts, flames, smoke, and toxic gases.

### Features:

- Noncombustible
- Applies smooth, consistent paste
- Cures to a tough, rubbery solid
- Red color

Part #	Stock Code
F4P FIRE BLOCK	0250-8648



## Hex Head Plastic Plug Anchor Kit w/Drill Bit (Tackle Box)

Hex Head Plastic Plug Anchor Kit w/Drill Bit is used for light-to-medium duty applications. In hollow building materials, the plug knots underneath the surface as the screw is tightened further into the plug.

### Features:

- Tackle box packaging for added convenience
- Plastic plug anchor kit with hex head combo screw

Part #	Stock Code
F4P HEXANC-B	0348-0387



## 10 fl. oz. White Silicone Caulk

White Silicone Caulk is fully waterproof and weatherproof, and won't crack, crumble, or dry out.

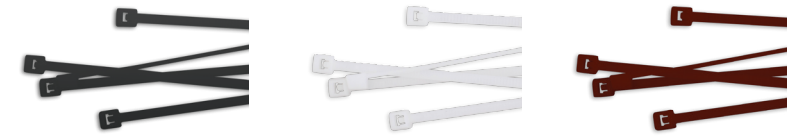
### Features:

- Multi-purpose siliconized acrylic latex caulk
- Fully paintable
- Can be used indoors or outdoors
- 40-year durability

Part #	Stock Code
F4P SILICONE W	0380-7585

## Plenum-Rated Cable Ties

Plenum-Rated Cable Ties are made in the USA. A wide variety of sizes and tensile strength combinations are available to fit any need.



B-Black

W-White

C-Burgundy

### Features:

- Plenum rated
- Available options: 4", 5", 6", 7", 8", 11", 14", 17", 24", 36", and 48"
- Made in the USA

Part #	Stock Code	Length	Tensile Strength	Color
F4P 04-18B	0276-9300	4"	18 lb	BLACK
F4P 04-18W	0276-9303	4"	18 lb	WHITE
F4P 05-40B	0276-9306	5"	40 lb	BLACK
F4P 05-40W	0276-9309	5"	40 lb	WHITE
F4P 06-18B	0276-9312	6"	18 lb	BLACK
F4P 06-18W	0276-9315	6"	18 lb	WHITE
F4P 07-50B	0276-9318	7"	50 lb	BLACK
F4P 07-50W	0276-9330	7"	50 lb	WHITE
F4P 08-120B	0276-9336	8"	120 lb	BLACK
F4P 08-120W	0276-9339	8"	120 lb	WHITE
F4P 11-50B	0276-9342	11"	50 lb	BLACK
F4P 11-50W	0276-9348	11"	50 lb	WHITE
F4P 14-50B	0276-9366	14"	50 lb	BLACK
F4P 14-50W	0276-9369	14"	50 lb	WHITE
F4P 14-120B	0276-9354	14"	120 lb	BLACK
F4P 14-120W	0276-9363	14"	120 lb	WHITE
F4P 17-50B	0276-9372	17"	50 lb	BLACK
F4P 17-50W	0276-9375	17"	50 lb	WHITE
F4P 24-175B	0276-9378	24"	175 lb	BLACK
F4P 24-175W	0276-9381	24"	175 lb	WHITE
F4P 36-175B	0276-9408	36"	175 lb	BLACK
F4P 36-175W	0285-5127	36"	175 lb	WHITE
F4P 48-175B	0276-9411	48"	175 lb	BLACK
F4PAR-07-50-MH-AH-35C	0273-0957	7"	50 lb	BURGUNDY
F4PAR-07-50-35C	0273-0948	7"	50 lb	BURGUNDY
F4PAR-11-50-35C	0273-0951	11"	50 lb	BURGUNDY
F4PAR-14-50-35C	0273-0954	14"	50 lb	BURGUNDY



## Hex Self Drill Screws

Hex Self Drill Screws are designed with a drill-shaped point to easily cut through sheet metal or steel, eliminating the need to create a pilot hole.



### Features:

- One-piece hex washer head
- Reduced possibility of crushing surfaces
- Fully threaded

Part #	Stock Code	Size	Length	Material
CES8X12HTJ	0210-9729	#8	1/2"	ZINC-COATED STEEL
CES8X34HTJ	0210-9732	#8	3/4"	ZINC-COATED STEEL
CES8X1HTJ	0210-9735	#8	1"	ZINC-COATED STEEL
CES8X114HTJ	0210-9738	#8	1-1/4"	ZINC-COATED STEEL
CES8X112HTJ	0210-9741	#8	1-1/2"	ZINC-COATED STEEL
CES8X2HTJ	0210-9744	#8	2"	ZINC-COATED STEEL
CES10X12HTJ	0210-9747	#10	1/2"	ZINC-COATED STEEL
CES10X34HTJ	0210-9750	#10	3/4"	ZINC-COATED STEEL
CES10X1HTJ	0210-9753	#10	1"	ZINC-COATED STEEL
CES10X114HTJ	0210-9756	#10	1-1/4"	ZINC-COATED STEEL
CES10X112HTJ	0210-9759	#10	1-1/2"	ZINC-COATED STEEL
CESTEKKIT	0257-4723	#8, #10	1/2", 3/4", 1"	ZINC-COATED STEEL
CES10X2HTJ	0210-9762	#10	2"	ZINC-COATED STEEL
CES12X34HTJ	0210-9765	#12	3/4"	ZINC-COATED STEEL
CES12X1HTJ	0210-9768	#12	1"	ZINC-COATED STEEL
CES12X114HTJ	0210-9771	#12	1-1/4"	ZINC-COATED STEEL
CES12X112HTJ	0210-9774	#12	1-1/2"	ZINC-COATED STEEL
CES12X2HTJ	0210-9777	#12	2"	ZINC-COATED STEEL
CES12X3HTJ	0222-6492	#12	3"	ZINC-COATED STEEL
CES14X34HTJ	0210-9780	#14	3/4"	ZINC-COATED STEEL
CES14X1HTJ	0210-9783	#14	1"	ZINC-COATED STEEL
CES14X112HTJ	0210-9786	#14	1-3/4"	ZINC-COATED STEEL
CES14X212HTJ	0240-5880	#14	2-1/2"	ZINC-COATED STEEL
CES1224X114HTJ	0244-6734	12/24	1-1/4"	ZINC-COATED STEEL
CES14X3HTJ	0272-2737	#14	3"	ZINC-COATED STEEL
CES6X1HTJ	0322-8474	#6	1"	ZINC-COATED STEEL
CESPC1012HTM	0320-5056	#10	1/2"	ZINC-COATED STEEL

## Hex Washer Head Tapping Screws

Hex Washer Head Tapping Screws feature a washer head to distribute pressure, reducing the risk of crushing material around the hole.



### Features:

- Sharp point
- One-piece hex washer head
- Reduced possibility of crushing surfaces
- Fully threaded

Part #	Stock Code	Size	Length	Material
CES8X12HWHSTSZJ	0210-9369	#8	1/2"	ZINC-COATED STEEL
CES8X34HWHSTSZJ	0210-9372	#8	3/4"	ZINC-COATED STEEL
CES8X1HWHSTSZJ	0210-9375	#8	1"	ZINC-COATED STEEL
CES8X114HWHSTSZJ	0210-9378	#8	1-1/4"	ZINC-COATED STEEL
CES8X112HWHSTSZJ	0210-9381	#8	1-1/2"	ZINC-COATED STEEL
CES8X2HWHSTSZJ	0210-9384	#8	2"	ZINC-COATED STEEL
CES10X12HWHSTSZJ	0210-9387	#10	1/2"	ZINC-COATED STEEL
CES10X34HWHSTSZJ	0210-9390	#10	3/4"	ZINC-COATED STEEL
CES10X1HWHSTSZJ	0210-9393	#10	1"	ZINC-COATED STEEL
CES10X1HWHSTSSSJ	0285-0558	#10	1"	18-8 STAINLESS STEEL
CES10X114HWHSTSZJ	0210-9396	#10	1-1/4"	ZINC-COATED STEEL
CES10X112HWHSTSZJ	0210-9399	#10	1-1/2"	ZINC-COATED STEEL
CES10X2HWHSTSZJ	0210-9402	#10	2"	ZINC-COATED STEEL
CES10X212HWHSTSZJ	0210-9405	#10	2-1/2"	ZINC-COATED STEEL
CES10X3HWHSTSZJ	0210-9408	#10	3"	ZINC-COATED STEEL
CES12X12HWHSTSZJ	0210-9411	#12	1/2"	ZINC-COATED STEEL
CES12X34HWHSTSZJ	0210-9414	#12	3/4"	ZINC-COATED STEEL
CES12X1HWHSTSZJ	0210-9417	#12	1"	ZINC-COATED STEEL
CES12X114HWHSTSZJ	0210-9420	#12	1-1/4"	ZINC-COATED STEEL
CES12X112HWHSTSZJ	0210-9423	#12	1-1/2"	ZINC-COATED STEEL
CES12X2HWHSTSZJ	0210-9426	#12	2"	ZINC-COATED STEEL
CES12X212HWHSTSZJ	0210-9429	#12	2-1/2"	ZINC-COATED STEEL
CES12X3HWHSTSZJ	0210-9432	#12	3"	ZINC-COATED STEEL
CES14X12HWHSTSZJ	0210-9435	#14	1/2"	ZINC-COATED STEEL
CES14X1HWHSTSZJ	0210-9438	#14	1"	ZINC-COATED STEEL
CES14X114HWHSTSZJ	0210-9441	#14	1-1/4"	ZINC-COATED STEEL
CES14X112HWHSTSZJ	0210-9444	#14	1-1/2"	ZINC-COATED STEEL
CES14X3HWHSTSZJ	0273-9858	#14	3"	ZINC-COATED STEEL
CES14X2HWHSTSZJ	0327-7098	#14	2"	ZINC-COATED STEEL
CESP10X1HWHSTSZ	0322-9218	#10	1"	ZINC-COATED STEEL
CESP10X2HWHSTSZ	0313-2966	#10	2"	ZINC-COATED STEEL
CESHWKIT	0257-4726	#8, #10	1/2", 3/4", MSH14, MSH516	ZINC-COATED STEEL KIT

## Thermostat Wire

Thermostat Wire has a Class 2 NEC rating for power-limited circuits and features solid, bare copper conductors and color-coded conductor jackets.

### Features:

- Rated for up to 150V
- 18 AWG and 20 AWG options
- UV resistant



Part #	Stock Code	AWG	Conductors	Length	Color
WC TSTAT18/10-250	0345-9177	18	8 COPPER	250 FT	BROWN
WC TSTAT18/2-500	0315-0996	18	2 COPPER	500 FT	BROWN
WC TSTAT18/3-500	0315-1002	18	3 COPPER	500 FT	BROWN
WC TSTAT18/4-500	0315-1035	18	4 COPPER	500 FT	BROWN
WC TSTAT18/5-250	0315-1170	18	5 COPPER	250 FT	BROWN
WC TSTAT18/6-250	0315-1179	18	6 COPPER	250 FT	BROWN
WC TSTAT18/8-250	0315-1182	18	8 COPPER	250 FT	BROWN
WC TSTAT18/2-500	0315-1185	18	2 COPPER	500 FT	BROWN
WC TSTAT20/2-500	0315-1185	20	2 COPPER	500 FT	BROWN
WC TSTAT18/2-500WH	0345-9180	18	2 COPPER	500 FT	WHITE
WC TSTAT18/3-500WH	0345-9183	18	3 COPPER	500 FT	WHITE
WC TSTAT18/4-500WH	0345-9186	18	4 COPPER	500 FT	WHITE
WC TSTAT18/5-250WH	0345-9189	18	5 COPPER	250 FT	WHITE
WC TSTAT18/6-250WH	0345-9192	18	6 COPPER	250 FT	WHITE
WC TSTAT18/8-250WH	0345-9195	18	8 COPPER	250 FT	WHITE
WC TSTAT18/10-250WH	0363-8112	18	10 COPPER	250 FT	WHITE
WC TSTAT20/2-500WH	0363-9198	20	2 COPPER	500 FT	WHITE

## Appliance Cords

Appliance Cords are ideal for general-purpose appliance use and can be used in a variety of applications, including garbage disposals, dishwashers, pumps, and washing machines.

### Features:

- 14 AWG and 16 AWG options
- 6 FT cord option
- Molded-on grounded plug, available in straight or angled
- 13 Amp, 125V, 1625W capacity



Part #	Stock Code	AWG	Conductors	Length	Configuration
WH AP14/3-6A	0279-7515	14	3	6 FT	ANGLED
WH AP14/3-6S	0279-7518	14	3	6 FT	STRAIGHT
WH AP16/3-6A	0279-7527	16	3	6 FT	ANGLED
WH AP16/3-6S	0279-7530	16	3	6 FT	STRAIGHT

## Non-Metallic Flexible Conduit

Non-Metallic Flexible Conduit is manufactured with rigid PVC reinforcement embedded within a flexible PVC wall. The construction provides excellent impact and crush strength while remaining highly flexible.

### Features:

- UV sunlight-resistant jacket
- Smooth PVC interior for easy wire pulling
- UL listed
- Rated for temperature range of -30°C to 80°C to 60°C oil



Part #	Stock Code	Description
WI NM038	0282-8436	3/8" NON-METALLIC LIQUID-TIGHT FLEX CONDUIT 100 FT COIL
WI NM050	0278-3778	1/2" NON-METALLIC LIQUID-TIGHT FLEX CONDUIT 100 FT COIL
WI NM075	0278-3784	3/4" NON-METALLIC LIQUID-TIGHT FLEX CONDUIT 100 FT COIL
WI NM100	0278-3790	1" NON-METALLIC LIQUID-TIGHT FLEX CONDUIT 100 FT COIL
WI NM125	0278-3796	1-1/4" NON-METALLIC LIQUID-TIGHT FLEX CONDUIT 100 FT COIL
WI NM150	0278-3799	1-1/2" NON-METALLIC LIQUID-TIGHT FLEX CONDUIT 50 FT COIL
WI NM200	0278-3802	2" NON-METALLIC LIQUID-TIGHT FLEX CONDUIT 50 FT COIL
WI NM050REEL	0278-3781	1/2" NON-METALLIC LIQUID-TIGHT FLEX CONDUIT 1500 FT REEL
WI NM075REEL	0278-3787	3/4" NON-METALLIC LIQUID-TIGHT FLEX CONDUIT 1000 FT REEL
WI NM100REEL	0278-3793	1" NON-METALLIC LIQUID-TIGHT FLEX CONDUIT 700 FT REEL
WI NM050REEL-S	0321-4860	1/2" NON-METALLIC LIQUID-TIGHT FLEX CONDUIT W/OUT COUPLING 1000 FT REEL
WI NM075REEL-S	0321-4863	3/4" NON-METALLIC LIQUID-TIGHT FLEX CONDUIT W/OUT COUPLING 500 FT REEL

## Liquid-Tight Whip Kit

Liquid-Tight Whip Kits make installations easy for AC units. With three distinct wire colors, hookup is simple and efficient while providing a liquid-tight seal.

### Features:

- Non-metallic conduit
- Connectors
- Conductors



Part #	Stock Code	Description
AC 85124	0253-3836	1/2" x 4 FT - 3 x 10G AC WHIP - THHN WIRE WITH FITTINGS AND REDUCING WASHERS
AC 85126-10	0320-5179	1/2" x 6 FT - 3 x 10G - THHN WIRE WITH FITTINGS AND REDUCING WASHERS
AC 85346	0253-3860	3/4" x 6 FT - 2 x 8G & 1 x 10G AC WHIP - THHN WIRE WITH FITTINGS AND REDUCING WASHERS
AC 85346-10	0253-3839	3/4" x 6 FT - 3 x 10G AC WHIP - THHN WIRE WITH FITTINGS AND REDUCING WASHERS



## Non-Metallic Fittings

Non-Metallic Fittings are available in a wide range of types and sizes. All metallic fittings are made of 100% steel, unless otherwise specified, and are available for liquid tight, rigid, and EMT.

### Features:

- Compact and sturdy PVC fitting furnished with steel locknut and seal gasket
- Smooth interior to speed installation and eliminate friction
- Protection from liquid, rain, and oils
- Corrosion resistant
- NPT thread
- UL94V-2 fire rated



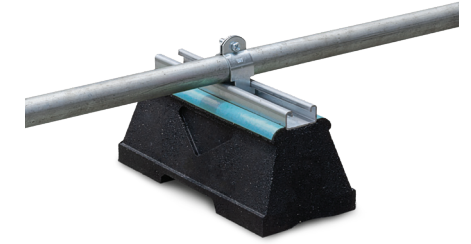
Part #	Stock Code	Description
WI NMFS038	0282-8442	3/8" STRAIGHT NON-METALLIC CONNECTOR
WI NMFS050	0279-8304	1/2" STRAIGHT NON-METALLIC CONNECTOR
WI NMFS075	0279-8307	3/4" STRAIGHT NON-METALLIC CONNECTOR
WI NMFS100	0279-8310	1" STRAIGHT NON-METALLIC CONNECTOR
WI NMFS125	0279-8313	1-1/4" STRAIGHT NON-METALLIC CONNECTOR
WI NMFS150	0279-8316	1-1/2" STRAIGHT NON-METALLIC CONNECTOR
WI NMFS200	0279-8319	2" STRAIGHT NON-METALLIC CONNECTOR
WI NMFA038	0282-8439	3/8" 90° NON-METALLIC CONNECTOR
WI NMFA050	0279-8286	1/2" 90° NON-METALLIC CONNECTOR
WI NMFA075	0279-8289	3/4" 90° NON-METALLIC CONNECTOR
WI NMFA100	0279-8292	1" 90° NON-METALLIC CONNECTOR
WI NMFA125	0279-8295	1-1/4" 90° NON-METALLIC CONNECTOR
WI NMFA150	0279-8298	1-1/2" 90° NON-METALLIC CONNECTOR
WI NMFA200	0279-8301	2" 90° NON-METALLIC CONNECTOR

## Roof Riser

Running pipe is made easier with Roof Risers. Pipes will run on top of them, so it doesn't sit directly on the roof. Roof Risers are made from recycled tires and are environmentally friendly.

### Features:

- Built-in channel guide
- Embedded fasteners for faster installation of strut channel
- Flow through helps prevent mold and ice dams
- Easy-to-carry hand grip
- Environmentally designed



Part #	Stock Code	Description	# of Bases	Strut
RTS1PG	0531-9075	ROOFTOP SUPPORT 10-1/2" WITH 13/16" DEEP STRUT	SINGLE BASE	PRE GALV
RTS1PG-6P	0545-3586	RTS1PG 6 PACK	6 BASES	PRE GALV

## Single-Gang Weatherproof Box & Cover

Single-Gang Weatherproof Box & Cover features an expandable polycarbonate cover that allows the use of larger plugs, such as generator cords, and can easily collapse to traditional depth.

### Features:

- Lugs included
- Closure plugs included
- Ground screw installed
- Premium powder-coat finish
- Die-cast copper-free aluminum
- Individually shrink-wrapped



WI BP10



WI FSB75/3

Part #	Stock Code	Description
WI BP10	0278-8089	3 x 3/4" HOLES 1-GANG 2" BOX - GRAY
WI FSB75/3	0278-8386	1-GANG OUTDOOR BLANK STEEL COVER (UNPAINTED)

## Bath Fans

Addvent offers a variety of bath fans designed to exhaust air quietly and efficiently.



Part #	Stock Code	Description
ABF50	0355-7844	50 CFM BATH VENT FAN 120V 3.5 SONES
ABF70	0355-7856	70 CFM BATH FAN 120V 3.5 SONES
ABF80	0579-8853	80 CFM BATH FAN 120V 0.6 SONES
ABF100	0355-7838	100 CFM BATH FAN 120V 2 SONES
ABFCFMA-50100	0554-6232	CFM ADJ BATHFAN 50-100CFM 1.6

## Bath Fans with Light

Addvent offers a variety of ventilation bath fans with lights.



Part #	Stock Code	Description
ABF50L	0355-7850	50 CFM BATH FAN W/LIGHT 120V 3.5
ABF70L	0355-7859	70 CFM BATH FAN W/LIGHT 120V 3.5
ABF80L	0579-8856	80 CFM BATH FANW/ LIGHT 120V 0.6
ABF100L	0355-7841	100 CFM BATH FAN W/ LIGHT 120V 2
ABFQ80L	0355-7889	80 CFM ULTRA-QUIET BATH FAN W/LI
ABFQ110L	0355-7883	110 CFM ULTRA-QUIET BATH FAN W/L
ABF80R	0355-7862	80 CFM RECESSED BATH FAN 6" TRIM

## Bath Fan Motor and Grille

The ABF series bath fans are high-performance bath fans designed to exhaust air quietly and efficiently.



Part #	Stock Code	Description
ABF50M	0355-7853	50 CFM BATH FAN MOTOR & GRILLE
ABF70M	0554-6199	70 CFM BATH FAN MOTOR & GRILLE

## Quiet Bath Fans

Addvent offers a variety of bath fans designed to exhaust air quietly and efficiently.



Part #	Stock Code	Description
ABFQ80	0355-7886	80 CFM ULTRA-QUIET BATH FAN 120V
ABFQ110	0355-7880	110 CFM ULTRA-QUIET BATH FAN 0.9
ABFQCFMA-80140	0554-6229	QUIET CFM ADJ BATHFAN 80-140 CFM

## Motor and Grille Retrofit

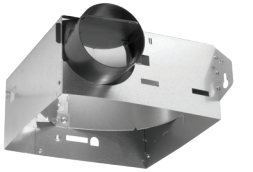
The ABF series is retrofitted for BROAN/NUTONE.



Part #	Stock Code	Description
ABF50-RF	0554-6226	50CFM RETROFIT FOR BROAN/NUTONE
ABF70-RF	0554-6445	70CFM RETROFIT FOR BROAN/NUTONE

## Bath Fans Housing

Bath fan housing is also available.



Part #	Stock Code	Description
ABF50H	0355-7847	50 CFM BATH FAN HOUSING
ABF70H	0554-6202	70 CFM BATH FAN HOUSING 4" DUCT

## Bath Accessories

Retrofit clips and Fire Damper are also offered.



Part #	Stock Code	Description
ABFRF CLIPS	0554-6196	ADDVENT RETROFIT CLIPS 4 PK
ABFFD11	0554-6223	FIRE DAMPER FOR ABFQ80 & ABFQ110



CAN'T FIND THE SPECIFICATION YOU NEED?

Contact us for the full range, plus learn more about our custom manufacturing options.

772.878.4944

tamcogroup.com



**ADDVENT**

[www.TAMLITEUSA.com](http://www.TAMLITEUSA.com)

**MCG**  
INDUSTRIAL

[www.MCG-USA.com](http://www.MCG-USA.com)

**F4P**  
INDUSTRIAL PERFORMANCE

[www.F4P-USA.com](http://www.F4P-USA.com)

**RPP**

[www.RPP-USA.com](http://www.RPP-USA.com)

**CENTAUR**  
ELECTRICAL INSTALLATION

[www.CENTAURINSTALLATION.com](http://www.CENTAURINSTALLATION.com)

All our products are available exclusively  
at City Electric Supply.

Visit [www.cityelectricsupply.com](http://www.cityelectricsupply.com) to find a branch near you.

**TAMCO**

11675 SW TOM MACKIE BLVD.  
PORT ST. LUCIE, FL 34987  
P. 772.878.4944

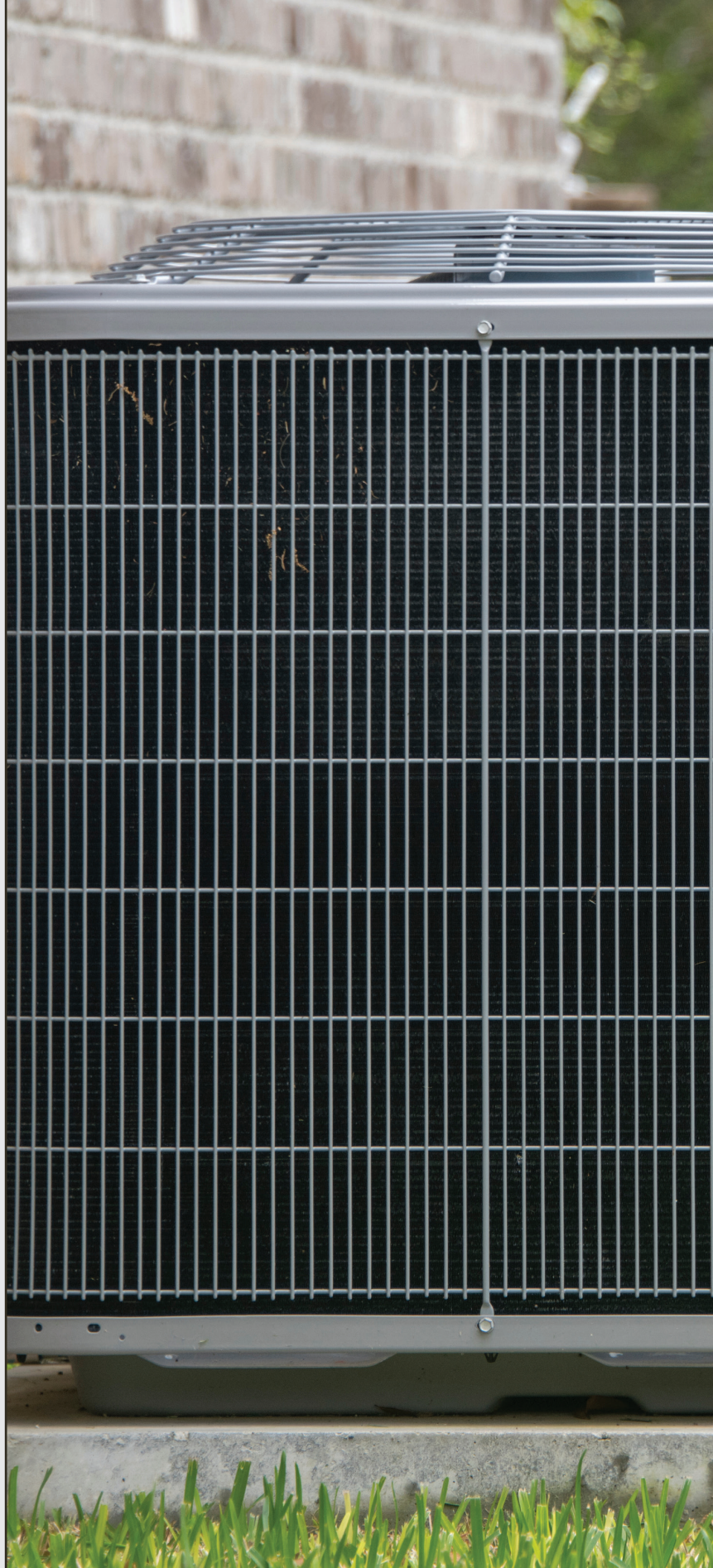
[www.TAMCOGROUP.com](http://www.TAMCOGROUP.com)



1 90010 31418 8



0611-8992



Printed in **USA**