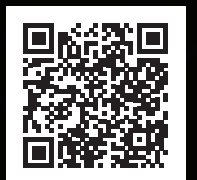


A DIVISION OF TAMCO

TAMLITE LIGHTING

LED TAPE LIGHT GUIDE

SEE OUR
PRODUCTS
ONLINE





ABOUT TAMLITE LIGHTING

The City Electric Supply motto is: 'The Power to Supply You', and no product embodies this more than our LED Tape Light offerings. As a company, we are driven by our deep-rooted desire to provide innovative and quality solutions to the ever-changing lighting field. Tamlite LED Tape Light continues to be a product that drives teamwork between our company, the branches we supply, and the customers they service.

A DIVISION OF **TAMCO**

www.tamcogroup.com

TABLE OF CONTENTS

04	How Does LED Tape Work?	12	24V DC LED RIBBON TAPE - TRRR16 Accessories	22	Custom Projects
06	12V DC LED RIBBON TAPE - TALRT16	14	24V DC LED RIBBON TAPE - CSRT	24	120V AC LED TAPE LIGHT - TRRR120V
08	12V DC LED RIBBON TAPE - TALRT16 Optional Accessories	16	24V DC LED RIBBON Tape Accessories	26	120V AC LED ROPE LIGHT - TRRR120V
10	24V DC LED RIBBON TAPE - TRRR16	20	Mounting Channels	28	FAQ



LED TAPE LIGHT

LED Tape Light is a quick and easy means of adding accent lighting to any space. The low cost and ease of installation make LED Ribbon Tape a perfect solution for simple accent lighting projects such as under cabinet, cove, or walkway lighting.

HOW DOES IT WORK

LEDs are attached to a flexible circuit board, which has a 3M adhesive backing or mounting clips, allowing for creative and unique placements such as under cabinets, rails, on top of closets, or even outdoor spaces. With low operating costs and minimal maintenance requirements, LED Ribbon Tape is an easy accent lighting solution for consumers.



ACTUAL SIZE*



12V DC LED RIBBON TAPE - TALRT16

TALRT Series

Packaged in a simple-to-use 16' reel, the 12V DC LED Ribbon Tape Kit is the perfect solution for any space in need of elevated lighting design, indoors and out. Set your design apart with colors, including Cool White, Warm White, and RGB. Additional accessories available.



- IP65 rated LED ribbon tape
- Red 3M 300MP adhesive
- Cut to length on site
- Dimmable
- Purchase as kit or individually - Available in Cool White, Warm White, Color Tuning, and RGB options

TALRT SERIES

TALRT16R-CWG2
0314-2530



TALRT16R-WWG2
0314-2533



TALRT16R-CW/WWG2
0314-2536



TALRT16R-RGBG2
0314-2539



ACTUAL SIZE*

TALRT SERIES PERFORMANCE

Color Temperature	Warm White	Cool White	Cool & Warm White	Multi-Color RGB
CCT	2700K	6000K	3000K - 5000K	RGB
W/ft	1.46	1.46	4.4	2.19
lm/ft	120	126	287 - 418	Varies
Cut Length	2"	2"	2"	4"
Max Run Length*	32'	32'	16'	16**

*Extended runs beyond 16' possible with TALRT-AMP.

TALRT SERIES ORDERING MATRIX

EXAMPLE: TALRT16R-CWG2

Series	Length	Packaging	Color Temperature	Generation
TALRT	16	[KIT] : Complete Install Kit [R] : Individual Reel	[-CW] : Cool White [-WW] : Warm White [-CW/WW] : Cool & Warm White [-RGB] : Multi-Color RGB	[G2] : Generation 2

KIT CONTENTS

To ensure your next installation goes according to plan, the LED Ribbon Tape kit includes everything you'll need for a simple installation.

*All components in kits can be purchased individually. For more detailed information, please see pages 8-11.

ORDER YOUR KIT TODAY!

- TALRT16KIT-CWG2 • 0314-2515
- TALRT16KIT-WWG2 • 0314-2518
- TALRT16KIT-CW/WWG2 • 0314-2521
- TALRT16KIT-RGBG2 • 0314-2524





12V DC LED RIBBON TAPE - TALRT16 OPTIONAL ACCESSORIES

4-PIN CONNECTORS

Connect multiple LED ribbons together

TALRT-2WAY
0318-0279

Split ribbon tape line into two separate directions from one driver.

TALRT2PSC
0297-0021

2" 4-Pin Male To Splice Connector Cable



SPLICE CONNECTORS

Connect multiple custom-cut LED ribbons together

TALRT2SC
0297-6828

2" Splice Connector Cable

TALRT12SC
0297-6225

12" Splice Connector Cable

TALRT24SC
0296-9865

24" Splice Connector Cable

TALRT4FTSC
0314-2548

4' Splice Connector Cable

TALRT8FTSC
0314-2551

8' Splice Connector Cable

TALRTBSC
0369-3957

Butt End Splice Connector



SEALS

TALRTSPLG
0328-9551

IP65 sealing kit. Used to weatherproof splice connections.



CLIPS

TALRTCLIPS
0318-0303

Mounting clips with included screws for extra mounting strength when necessary.



DRIVERS & AMPLIFIERS

TALRT-AMP
0318-0285

*TALRT-AMP requires 1x TALRTDRIVER to run, TALRTDRIVER sold separately.



TALRTDRIVER
0295-1862

12V 60W Driver



CONTROLLERS

Control your LED Ribbon Tape wirelessly

TALRT-BT-SC
0318-0288

Single Color Bluetooth Controller

TALRT-BT-CW/WW
0318-0291

Cool & Warm White Bluetooth Controller

TALRT-BT-RGB
0318-0294

Multi-Color RGB Bluetooth Controller



TALRT-RF-SCG2
0549-5856

Single Color Radio Frequency Controller

TALRT-RF-CW/WWG2
0318-0300

Cool & Warm White Radio Frequency Controller

TALRT-RF-RGBG2
0318-0309

Multi-Color RGB Radio Frequency Controller





24V DC LED RIBBON TAPE - TRRRT16

TRRRT16 Series

The TRRRT16 Series includes everything needed to bring RGBW color options to any job or installation. The RGBW color-changing ribbon tape will allow you to create an ever-changing ambiance to suit any mood desired. This kit includes an RF remote and receiver that makes changing colors, setting levels, and creating color shifts easy and fun. The 16' spool can be cut & spliced every 4 inches on clearly marked cut points to create custom lengths for your installation needs. Splice connectors included will allow you to add angles and jump gaps.

- Dimmable
- Indoor use
- Max run length 32ft
- Cutable length - every 4"
- IP20 or IP65 options



TRRRT16 SERIES

IP20 Rated

TRRRT16R-RGBWW
0549-5724

TRRRT16R-RGBNW
0549-5730



ACTUAL SIZE*

IP65 Rated

TRRRT16R-RGBWW-WET
0549-5745

TRRRT16R-RGBNW-WET
0549-5754



TRRRT16 SERIES PERFORMANCE

Color Temperature	Warm White	Neutral White
CCT	3000K	4000K
W/ft	2.4	2.4
lm/ft	67	67
Cut Length	4"	4"
Max Run Length	32'	32'

TRRRT SERIES ORDERING MATRIX

EXAMPLE: TRRRT16KIT-RGBWW

Series	Length	Packaging	Color Temperature	Location Rating
TRRRT	16	[KIT] : Complete Install Kit [R] : Individual Reel	[-RGBWW] : 3000K Warm White [-RGBNW] : 4000K Neutral White	[BLANK] : Dry IP20 [-WET] : WET IP65

KIT CONTENTS

To ensure your next installation goes according to plan, the LED Ribbon Tape kit includes everything you'll need for a simple installation.

*All components in kit can be purchased individually. For more detailed information, please see pages 12-13.

IP20 Rated

TRRRT16KIT-RGBWW • 0549-5694
TRRRT16KIT-RGBNW • 0549-5727

IP65 Rated

TRRRT16KIT-RGBWW-WET • 0549-5733
TRRRT16KIT-RGBNW-WET • 0549-5739





24V DC LED RIBBON TAPE - TRRRT16 ACCESSORIES

CONTROLLERS

Control your LED Ribbon Tape wirelessly

TRRRT-RF
0549-5805

RF Receiver And Remote
For TRRRT Series

TRRRT-BT
0549-5796

Blue Tooth Control
For TRRRT Series

TRRRT-ALEXA CONTROL
0549-5799

Alexa Control For
TRRRT Series



SPLICE CONNECTORS

Connect multiple custom-cut LED ribbons together



DRY IP20

TRRRT2SC
0549-5760

2" Splice Conn Cbl 5 Pin

TRRRT6SC
0549-5763

6" Splice Conn Cbl 5 Pin

TRRRT12SC
0549-5769

12" Splice Conn Cbl 5 Pin

TRRRTBSC
0549-5826

Butt Splice Conn 5 Pin

TRRRT24SC
0549-5772

24" Splice Conn Cbl 5 Pin

TRRRT4FTSC
0549-5775

4ft Splice Conn Cbl 5 Pin

TRRRT8FTSC
0549-5778

8ft Splice Conn Cbl 5 Pin

WET IP65

TRRRT2SC-WET
0549-9681

2" Splice Conn Cbl 5 Pin IP65

TRRRT6SC-WET
0549-9684

6" Splice Conn Cbl 5 Pin IP65

TRRRT12SC-WET
0549-9693

12" Splice Conn Cbl 5 Pin IP65

TRRRTBSC-WET
0549-9708

Butt Splice Conn 5 Pin IP65

TRRRT24SC-WET
0549-9696

24" Splice Conn Cbl 5 Pin IP65

TRRRT4FTSC-WET
0549-9699

4ft Splice Conn Cbl 5 Pin IP65

TRRRT8FTSC-WET
0549-9702

8ft Splice Conn Cbl 5 Pin IP65

DRIVERS

TRRRT36WDRIVER
0583-7142

36W 24V Driver

TRRRT70WDRIVER
0549-5787

70W 24V Driver





24V DC LED RIBBON TAPE - CSRT

CSRT Series

A truly customizable solution for contractors, CSRT series 24V ribbon tape offers greater job-site design freedom compared to traditional kits. With bulk reels in two different lumen packages, aluminum channels, dimmable drivers, and screw-in terminal connectors branches can stock and supply customers in-house and on-site with the exact custom runs they need.



- 95 CRI
- 100' ribbon reel (IP20 rated)
- 2" - 8' splice connectors available
- Standard & high lumen options

CSRT SERIES

White CSRT

CSRT100RW-WW 0327-6831 CSRT100RW-WW3K 0549-5808 CSRT100RW-NW 0391-2228 CSRT100RW-CW 0327-6825



White High Lumen CSRT

CSRT100RW-WWHL 0327-6834 CSRT100RW-WW3KHL 0549-5811 CSRT100RW-NWHL 0391-2231 CSRT100RW-CWHL 0327-6828



Black CSRT

CSRT100RB-WW 0327-6819 CSRT100RB-NW 0391-2204 CSRT100RB-CW 0327-6813



Black High Lumen CSRT

CSRT100RB-WWHL 0327-6822 CSRT100RB-NWHL 0391-2207 CSRT100RB-CWHL 0327-6816



CSRT SERIES PERFORMANCE

Color Temperature	Warm White	Warm White 3K	Neutral White	Cool White	High Lumen Warm White	High Lumen Warm White 3K	High Lumen Neutral White	High Lumen Cool White
CCT	2700K	3000K	4000K	5000K	2700K	3000K	4000K	5000K
W/ft	1.83	1.83	1.83	1.83	3.66	3.66	3.66	3.66
lm/ft	140	150	160	170	330	340	350	360
Cut Length	4"	4"	4"	4"	2"	2"	2"	2"
Max Run Length*	50'	50'	50'	50'	35'	35'	35'	35'

*Maximum runs based on voltage drop, please see FAQ for more details.

CSRT SERIES ORDERING MATRIX

EXAMPLE: CSRT100RW-WW3K

Series	Length	Tape Color	Color Temperature	Options
CSRT	[100R] : 100 Ft. Reel	[W] : White [B] : Black	[-WW] : 2700K Warm White [-WW3K] : 3000K Warm White* [-NW] : 4000K Neutral White [-CW] : 5000K Cool White	[BLANK] : Standard Lumen [HL] : High Lumen

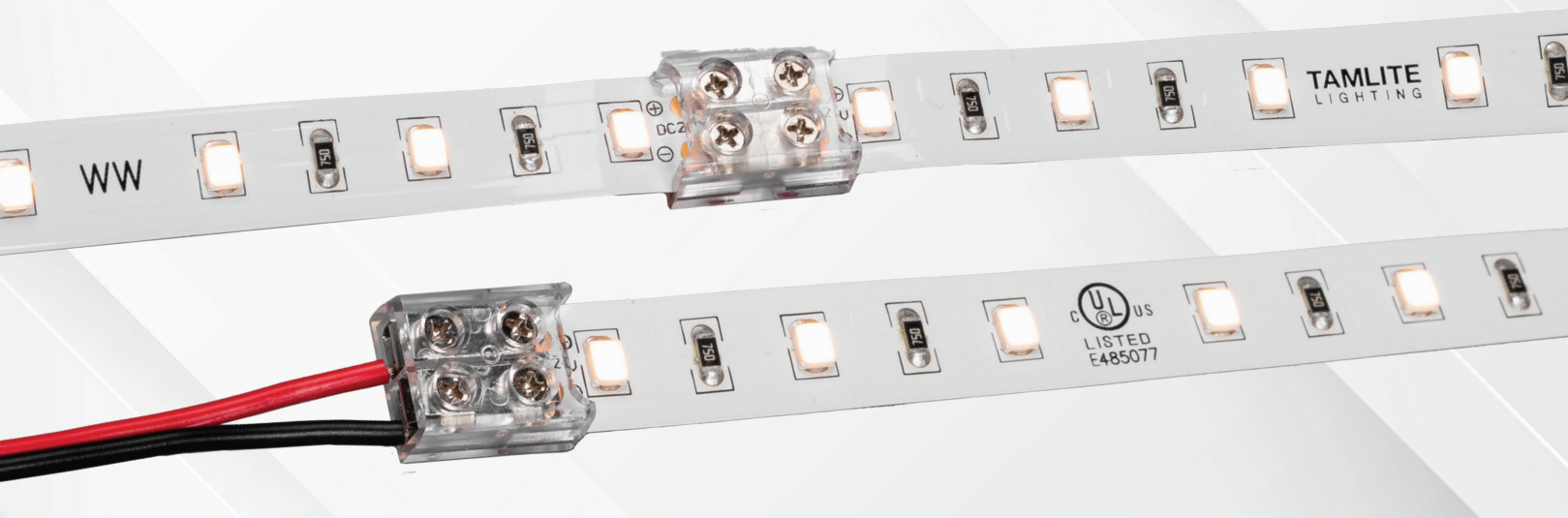
*Warm White 3K only available with Tape Color White.

CONTRACTOR SERIES CONNECTORS

Bridge gaps & obstacles between 24V LED Ribbon Tape



Interconnectors	
CSRT2IC	2" Connector Cable
CSRT6IC	6" Connector Cable
CSRT12IC	12" Connector Cable
CSRT24IC	24" Connector Cable
CSRT4FTIC	4' Connector Cable
CSRT8FTIC	8' Connector Cable
CSRTBIC	Butt End Connector



24V DC LED RIBBON TAPE ACCESSORIES

TLTB SERIES

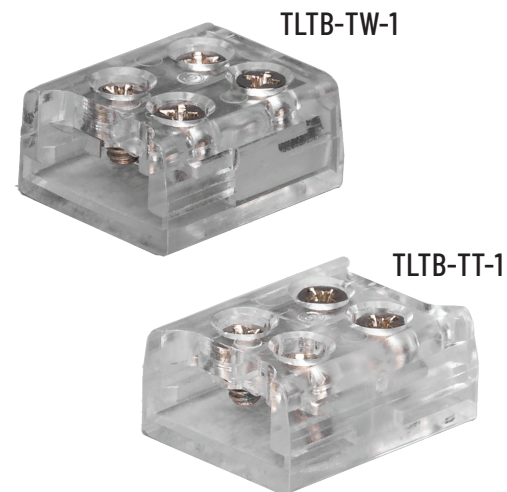
The TLTB series screw-in terminal blocks offer a quick and easy way to connect CSRT series ribbon tape. Whether you're connecting tape-to-tape or tape-to-wire, we've got you covered. Clear connectors help reduce dark spots to provide a more seamless appearance compared to opaque connectors.

TLTB-TT-1
0635-9274

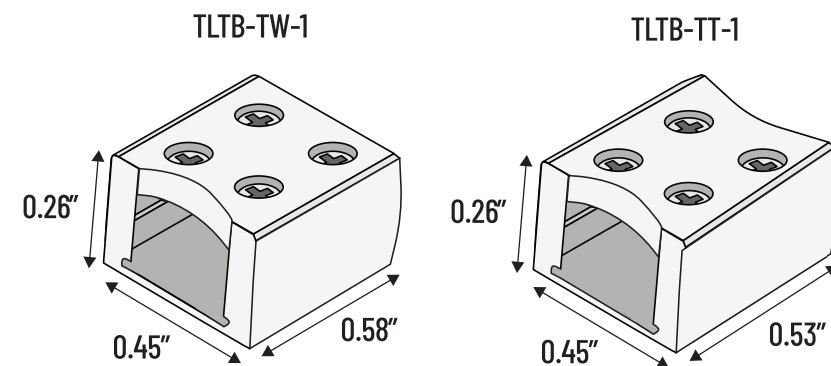
Tape-to-Tape
Splice Connector

TLTB-TW-1
0636-2247

Tape-to-Wire
Splice Connector



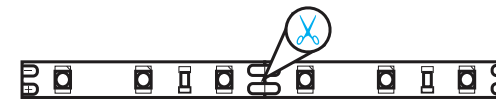
TAPE CONNECTORS DIMENSIONS



TAPE CONNECTORS INSTALLATION

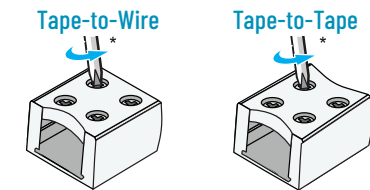
1. CUT TAPE LIGHT

Cut at line indicated with scissors icon.



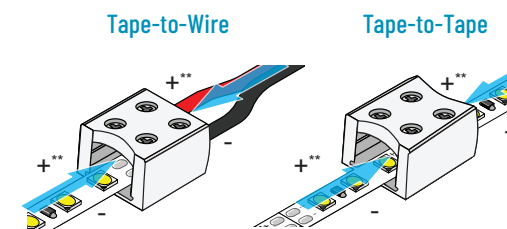
2. LOOSEN TERMINAL

Size #0, or mini Phillips screwdriver recommended.



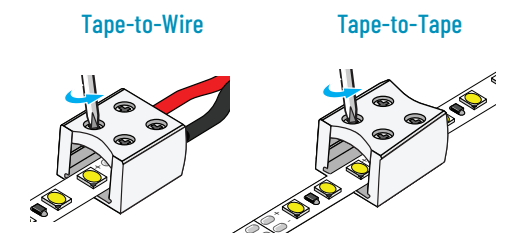
3. INSERT TAPE LIGHT AND WIRE

Ensure polarity matches on both sides of connector.



4. FASTEN TERMINAL

Verify connection is secure. Take care to avoid over tightening terminal screws.



SAFETY / WARNINGS / DISCLOSURES

1. Install in accordance with national and local electrical code regulations.
2. This product is intended to be installed and serviced by a qualified, licensed electrician.
3. Only install with a Class 2 DC Constant Voltage LED driver.
4. Only use copper wiring. Use wires rated for at least 176°F (80°C) and certified for use with external connection of electrical equipment.
5. Each maximum run requires a dedicated power feed from the driver. Do not extend beyond the recommended maximum run length.
6. Tape light, attached wire leads, and additional extension cables, connectors, etc., are not rated for in-wall installation unless otherwise noted. Tape light and attached wire leads are field-cuttable.
7. Ensure applicable wire is installed between driver, fixture, and any controls in between. When choosing wire, factor in voltage drop, amperage rating, and type (in-wall rated, wet location rated, etc.). Inadequate wire installation could overheat wires and cause fire.
8. Do not install in environment where LED chips are exposed to direct sunlight as damage to the phosphor will occur.
9. Do not install in environment where excessive heat may exist (ex. close proximity to fireplace, etc.) See Ambient Temperature ratings.
10. Do not install indoor LED tape light products in outdoor / wet location environments. Only wet location tape light models are rated for outdoor / wet locations.
11. Do not modify product beyond instructions or warranty will be void.
12. Tape light must be handled with care. Excessive handling, bending, and pressure may damage the product, voiding the warranty.
13. Actual color may vary from what is pictured on this sheet and other print materials due to the limitations of photographic processes.
14. We reserve the right to modify and improve the design of our products without prior notice. We cannot guarantee to match existing installed products for subsequent orders or replacements in regards to product appearance, CCT, or lumen output.

DIMMABLE DRIVER

The TLVC series Low Voltage Dimmer/Driver switch is designed to accept 120V AC and convert it into 12V DC or 24V DC providing an in-wall solution for your low voltage applications. This dimmer/driver is sure to enhance your ribbon tape applications. The 24V DC TLVC is designed for use with our CSRT series ribbon tape.



TLVC60W-12
0580-2000

12V 60W Dimmer/Driver All-in-One

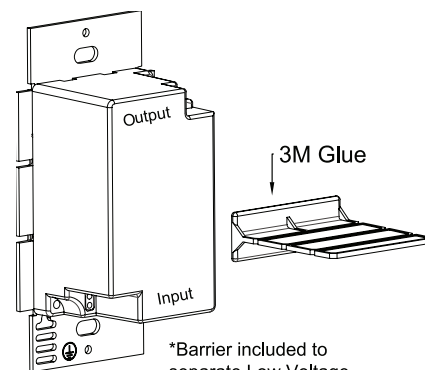
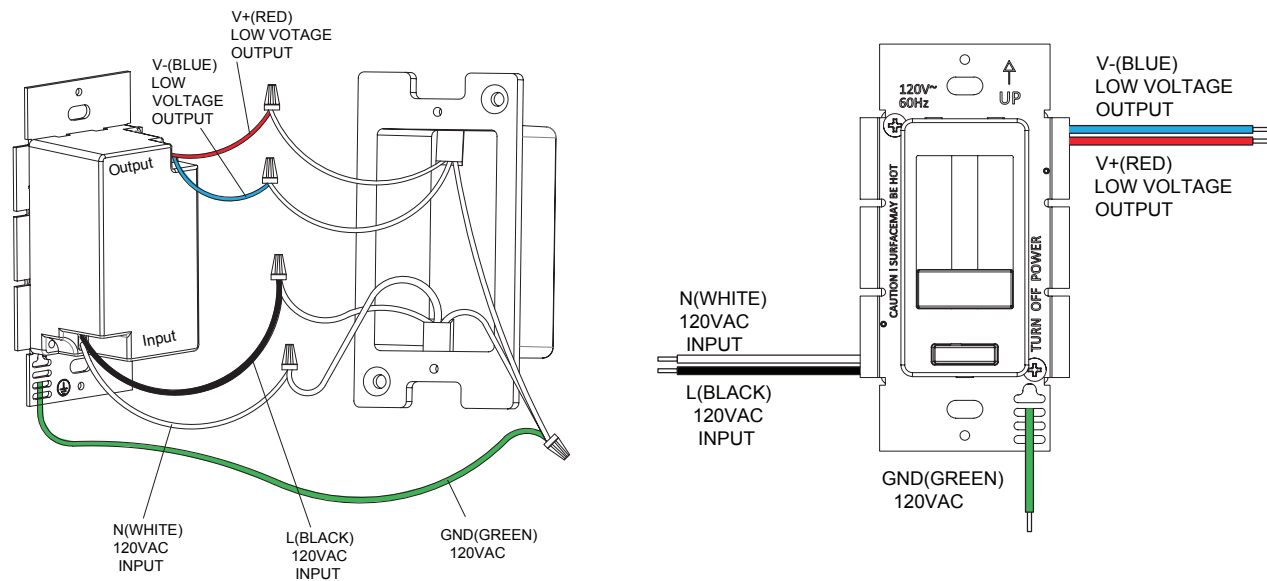
TLVC60W-24
0580-2003

24V 60W Dimmer/Driver All-in-One

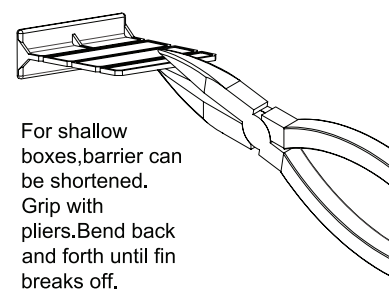


*Single gang face plate included in box.

WIRING DIAGRAM



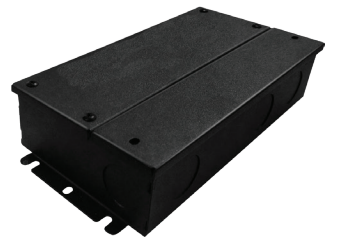
*Barrier included to separate Low Voltage from High Voltage inside the junction box.



DIMMABLE DRIVER 5 IN 1

The CSRT series dimmable junction box LED driver is the ideal choice for commercial and residential low-voltage LED ribbon tape applications. The durable powder-coated steel housing includes a dedicated junction box compartment for low voltage and high voltage connections and is wet location rated for both indoor and outdoor use. Compatible with most PWM, MLV, ELV, TRIAC, and 0-10V dimmers*, the CSRT junction box LED drivers are a true multi-purpose low-voltage driver solution.

*See spec sheet for compatibility list.



CSRT30 JB
0633-3924

30W 24V JB DIMMABLE DRIVER 5IN1 120-277V
6.49x3.72x1.57in

CSRT60 JB
0633-3927

60W 24V JB DIMMABLE DRIVER 5IN1 120-277V
7.40x3.72x1.57in

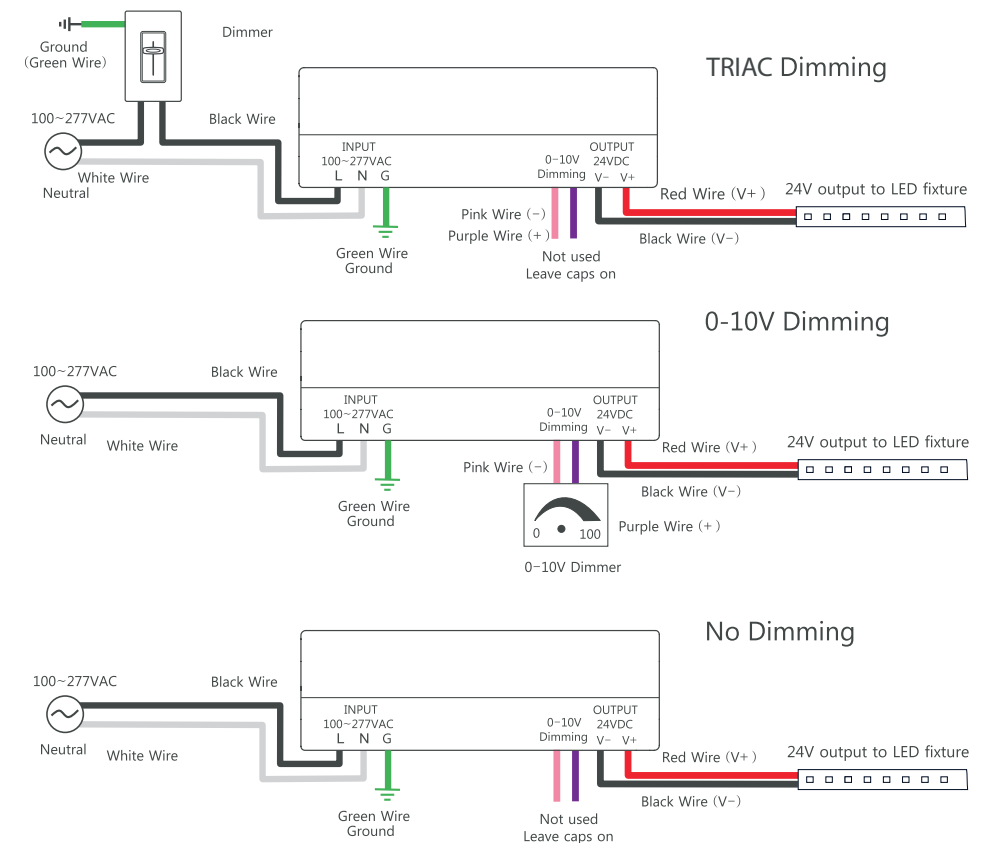
CSRT96 JB
0633-3930

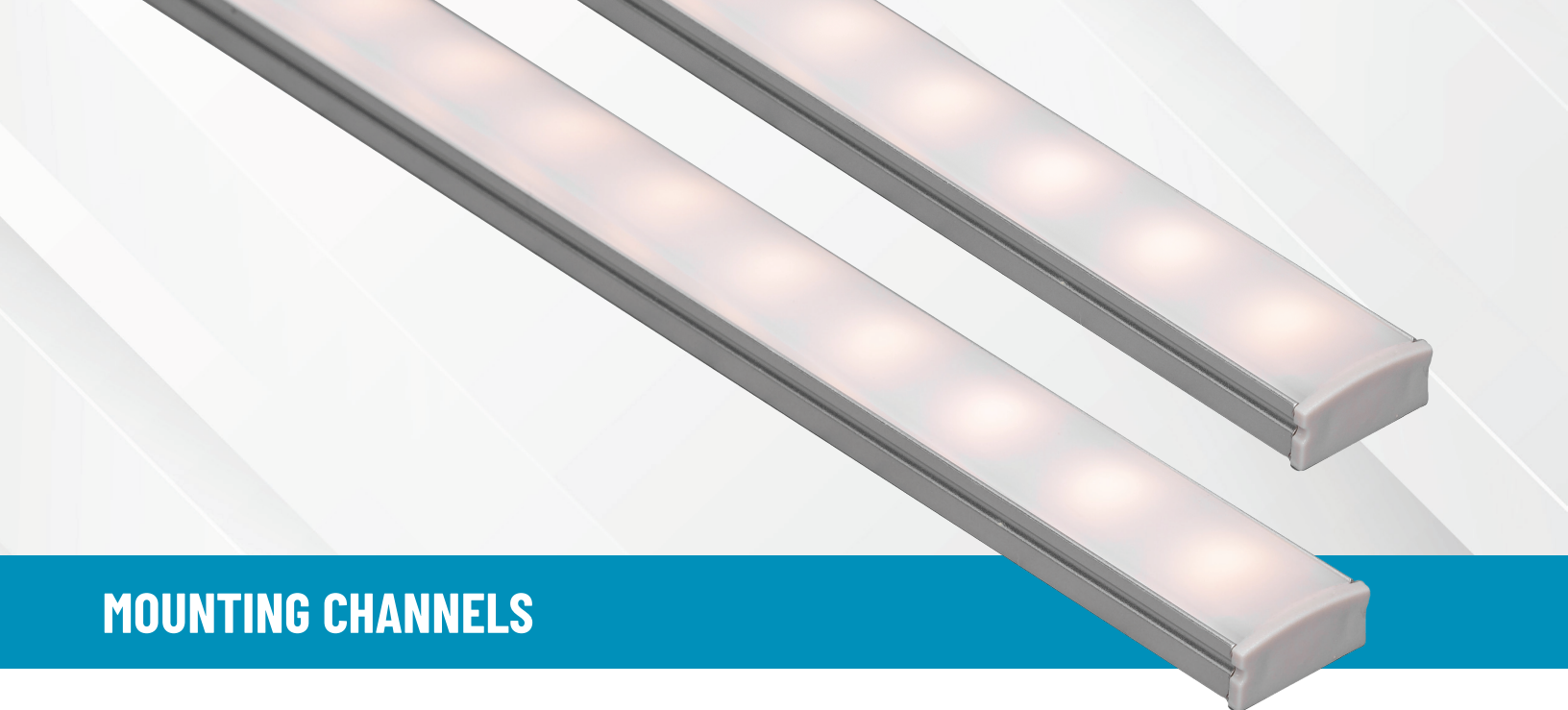
96W 24V JB DIMMABLE DRIVER 5IN1 120-277V
8.66x3.72x1.57in

CSRT200 JB
0633-3933

200W 24V JB DIMMABLE DRIVER 5IN1 120-277V
10.23x4.05x1.77in

WIRING DIAGRAM





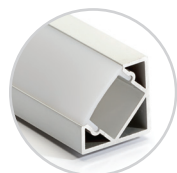
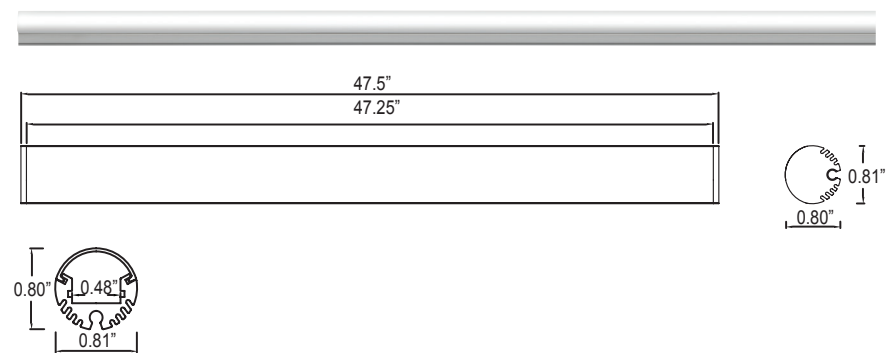
MOUNTING CHANNELS

STRUCTURAL SUPPORT MEETS ARCHITECTURAL DESIGN

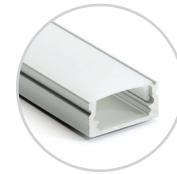
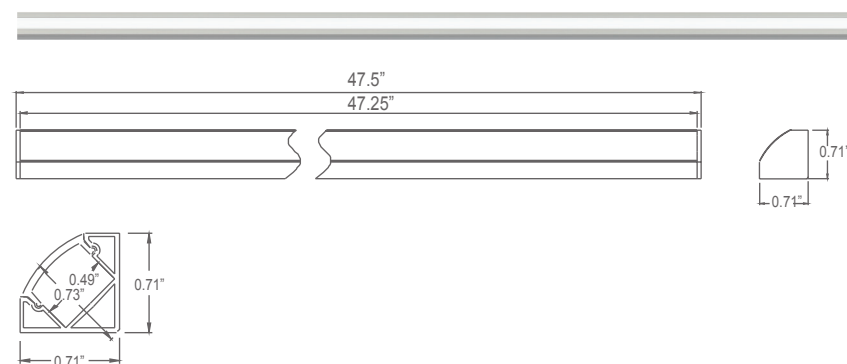
Provide a sleek appearance, increased diffusion, and greater structural support to your ribbon tape install with the CSRTAL4 and TALRT4 series channels. Both channels are compatible with 12V DC and 24V DC series low voltage ribbon tape to provide more customization to your job site. Mounting Clips and end caps included in all CSRTAL series channels.



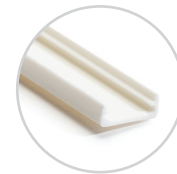
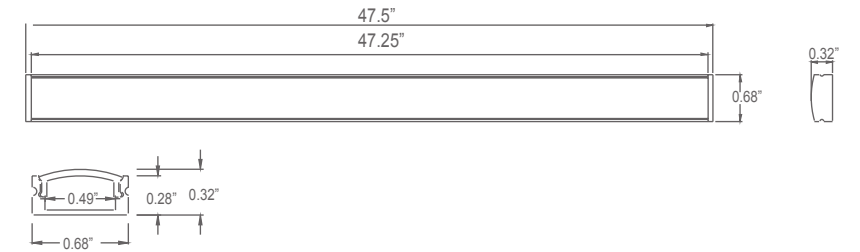
CSRTAL4RD
0369-3426
4' Aluminum Channel With A Large Milky Lens To Maximize Light Diffusion When Mounted.



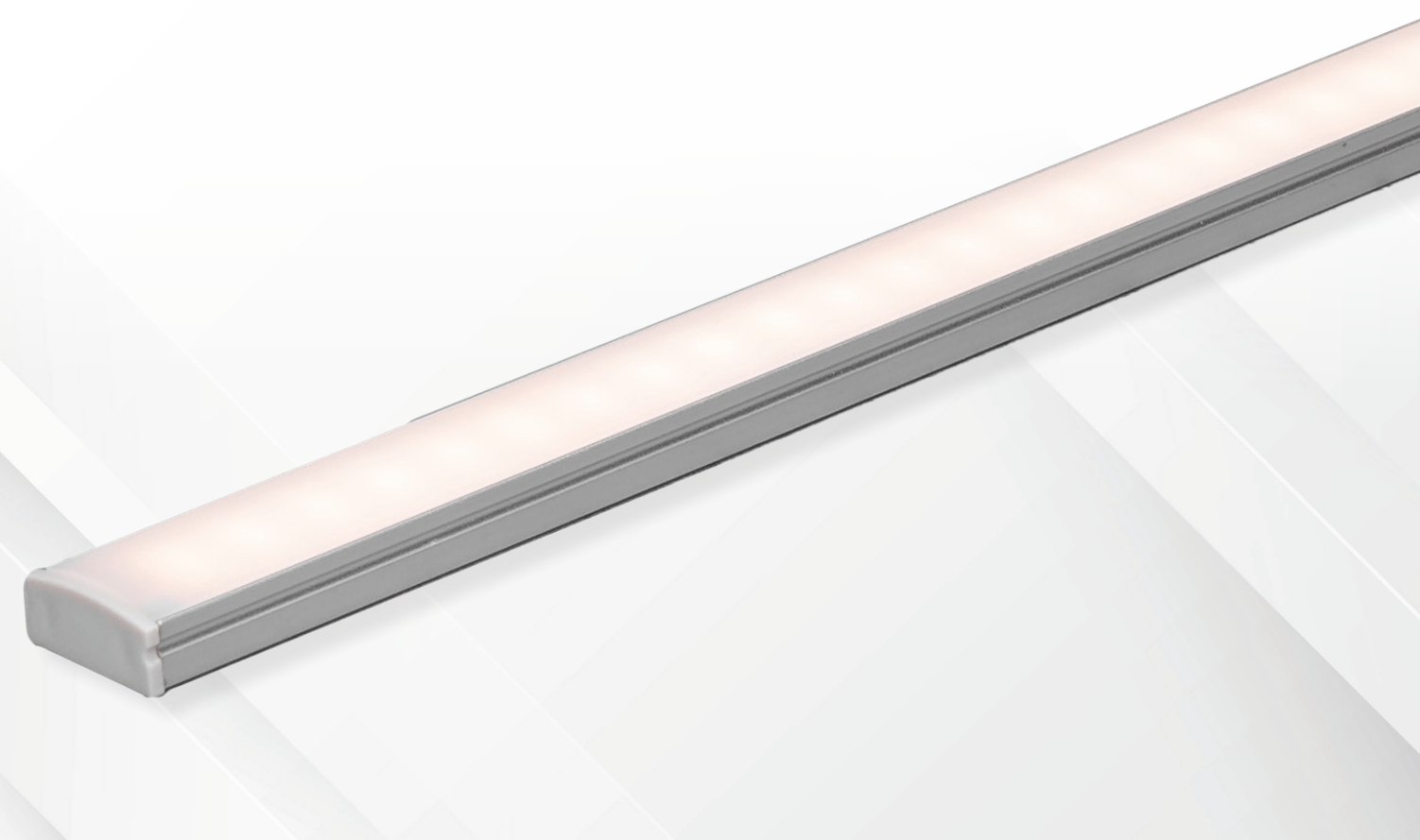
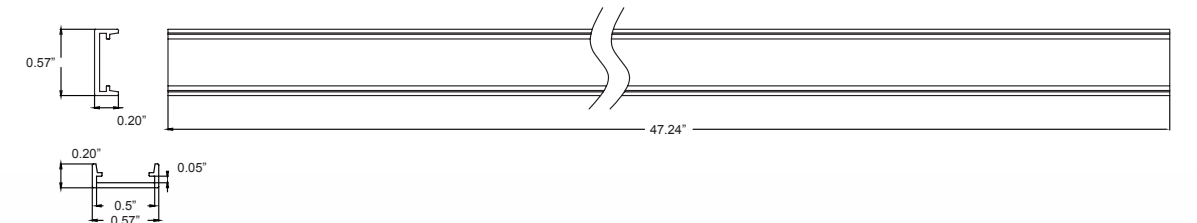
CSRTAL4CR
0369-3423
4' Aluminum Channel With A 45° Angled Milky Lens For Light Diffusion In Corners.



CSRTAL4SL
0369-3429
4' Aluminum Channel With Slim Milky Lens For Light Diffusion Of A Flat Surface.



TALRT4MC
0295-1871
4' Plastic Mounting Channel Without A Lens For Mounting On Flat Surfaces.



TAMLITE OFFERS CUSTOM LENGTH LED RIBBON TAPE

CSRT SERIES 24V DC LED RIBBON TAPE

Accent lighting can be quickly and easily added to any area with LED Ribbon Tape. LED Ribbon Tape is a great option for straightforward accent lighting projects like under cabinet lighting or outdoor walkways due to its low cost and simplicity of installation.

Contact TamLite Lighting with your precise task requirements to avoid technical problems. We can cut LED Ribbon Tape specifically tailored to your unique applications using just your required LED Ribbon Tape and splice lengths. Pre-cut LED Ribbon Tape helps reduce the need for tools or on-site adjustments.



CAUTION
THIS BAG CONTAINS
MOISTURE AND ELECTROSTATIC
SENSITIVE DEVICES

Attention

1. Storage Temperature: -40°~+80°C.
Operating Temperature: -25°~+40°C.
2. Installation surface must be smooth, clean and dry.
3. The part of LED components can not be fixed on the surface of the sharp edge.
4. Strip should not be collided or crushed.
5. Strip can be cut following the cutting lines.

CE

CONTACT US TODAY FOR YOUR CUSTOM PROJECT!

CUT OUT EXCESS WITH CUSTOM CUTS

Tamlite offers custom cuts of CSRT series 24V ribbon tape, providing a ready-to-install solution to contractors on the job site. Together, we can build custom layouts and designs to best suit contractors' needs.

Contact TamLite Lighting at

✉ info@tamliteusa.com 📞 772.879.0178





120V AC LED TAPE LIGHT - TRRRT-120V

TRRRT-120V Series

The TRRRT-120V series boasts an IP65 rating to provide directional light to outdoor and wet location applications. Available in 13', 49', and 164' lengths with expansion capabilities up to 164', the TRRRT-120V series is extremely versatile.

- Flexible allowing for multiple applications
- Wet Location Rated
- Linkable up to 164ft



TRRRT-120V SERIES

TRRRT-120V-13FT-CW • 0551-4789

TRRRT-120V-13FT-WW • 0551-4780

TRRRT-120V-49FT-CW • 0551-4792

TRRRT-120V-49FT-WW • 0551-4783

TRRRT-120V-164FT-CW • 0551-4795

TRRRT-120V-164FT-WW • 0551-4786

TRRRT-120V-13FT-RGB • 0551-4798

TRRRT-120V-49FT-RGB • 0551-4801

TRRRT-120V-164FT-RGB • 0551-4804



TRRRT SERIES PERFORMANCE

Color Temperature	Warm White	Cool White	Multi-Color RGB
CCT	2700K	5500K	RGB
W/ft	1.9	1.8	2.2
lm/ft	43	37	Varies

TRRRT SERIES ORDERING MATRIX

EXAMPLE: TRRRT-120V-13FT-WW

Series	Length	Color Temperature
TRRRT-120V	[-13FT] - 13 Feet [-49FT] - 49 Feet [-164FT] - 164 Feet	[-WW] : 2700K Warm White [-CW] : 5500K Cool White [-RGB] : Multi-Color RGB

CLIP QUANTITIES

*Clips are included with kits. Quantities are based on the length of the kit.

13FT • 10 Clips

49FT • 16 Clips

164FT • 50 Clips



KIT CONTENTS

To ensure your next installation goes according to plan, the LED Ribbon Tape kit includes everything you'll need for a simple installation, including a driver, clips, and 1 controller on RGB models.

*Clips and Controllers are not sold separately.

TRRRT-120V-13FT-RGB • 0551-4798

TRRRT-120V-49FT-RGB • 0551-4801

TRRRT-120V-164FT-RGB • 0551-4804



TRRRT-120V-13FT-CW • 0551-4789

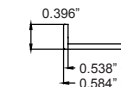
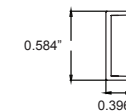
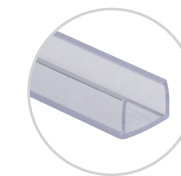
TRRRT-120V-13FT-WW • 0551-4780

TRRRT-120V-49FT-CW • 0551-4792

TRRRT-120V-49FT-WW • 0551-4783

TRRRT-120V-164FT-CW • 0551-4795

TRRRT-120V-164FT-WW • 0551-4786



PVC CHANNEL

TRRRT-120V-6FTPVC
0551-4813

6FT Clear PVC Channel for TRRRT-120V



120V AC LED ROPE LIGHT - TRRRL-120V

TRRRL-120V Series

The TRRRL-120V series boasts an IP65 rating to provide omnidirectional light to outdoor and wet location applications. Available in 12', 48', and 150' lengths with expansion capabilities up to 150', the TRRRL-120V series is extremely versatile.

- Flexible allowing for multiple applications
- Wet Location Rated
- Linkable up to 150ft



TRRRL-120V SERIES

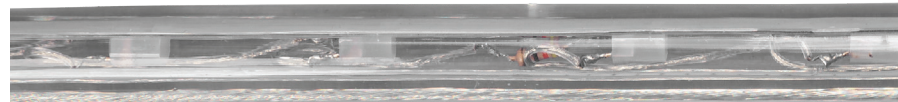
TRRRL-120V-12FT-CW
0551-4762

TRRRL-120V-48FT-CW
0551-4765

TRRRL-120V-150FT-CW
0551-4768

TRRRL-120V-48FT-WW
0551-4756

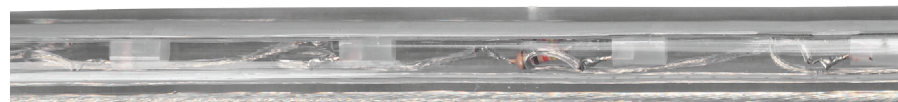
TRRRL-120V-150FT-WW
0551-4759



ACTUAL SIZE*

TRRRL-120V-48FT-RGB
0551-4774

TRRRL-120V-96FT-RGB
0551-4777



TRRRL SERIES PERFORMANCE

Color Temperature	Warm White	Cool White	Multi-Color RGB
CCT	2700K	6500K	RGB
W/ft	1.9	1.8	2.2
lm/ft	43	37	Varies

TRRRL SERIES ORDERING MATRIX

EXAMPLE: TRRRL-120V-12FT-WW

Series	Length	Color Temperature
TRRRL-120V	[-12FT] - 12 Feet* [-48FT] - 48 Feet [-150FT] - 150 Feet**	[-WW] : 2700K Warm White [-CW] : 6500K Cool White [-RGB] : Multi-Color RGB

*12 Foot reels only available in CW.
**150 Foot reels not available in RGB.

CLIP QUANTITIES

*Clips are included with kits. Quantities are based on the length of the kit

12FT • 10 Clips 48FT • 16 Clips 150FT • 50 Clips



KIT CONTENTS

To ensure your next installation goes according to plan, the LED Rope Tape kit includes everything you'll need for a simple installation including a driver, clips, and 1 controller on RGB models.

*Clips and Controllers are not sold separately.

TRRRL-120V-48FT-RGB • 0551-4774
TRRRL-120V-96FT-RGB • 0551-4777



TRRRL-120V-12FT-CW • 0551-4762
TRRRL-120V-48FT-CW • 0551-4765
TRRRL-120V-48FT-WW • 0551-4756
TRRRL-120V-150FT-CW • 0551-4768
TRRRL-120V-150FT-WW • 0551-4759



FAQ TALRT 12V DC SERIES

Q: How many feet of tape can you put on one driver?

A: The distance can vary depending on the model. See our driver/distance chart.

PRODUCT	TALRTDRIVER
TALRT16R-WWG2	32'
TALRT16R-CWG2	32'
TALRT16R-CW/WWG2	16**
TALRT16R-RGBG2	16**

*If needed to run past 16', you will need to use a TALRT-AMP.

Q: Is the TALRT series LED Ribbon Tape compatible with a wall dimmer?

A: No, TALRT is controlled via a wireless RF Controller or Bluetooth kit.

Q: What connectors do I need to use?

A: TALRT_SC series splice connectors can be used at custom-cut connections. Otherwise, reels have 4-pin male and female ends to connect together built into every reel.

Q: How does the TALRT series LED Ribbon Tape connect with the driver?

A: The driver connects to the RF controller via a barrel connector, and the controller connects to the ribbon tape via a 4-pin connector.

Q: Can I use the TALRT series LED Ribbon Tape outside?

A: Yes, the TALRT series Ribbon Tape is IP65 (outdoor rated). However, the driver and RF receiver must be stored inside a weatherproof box. All other custom cuts must be sealed with heat shrink tubes (TALRTSPLG).

Q: Which mounting channels work with the TALRT series LED Ribbon Tape?

A: All aluminum and plastic mounting channels are compatible.

Q: Can I link multiple TALRT kits to run off a single RF Remote?

A: Yes, the RF remote is capable of controlling multiple kits. Programming details can be found in kit's instruction sheet.

FAQ TRRRT16 24V DC SERIES

Q: How many feet of tape can you put on one driver?

A: The maximum run distance on the TRRRT16 series is 32 Feet or two reels.

Q: Is the TRRRT16 series LED Ribbon Tape compatible with a wall dimmer?

A: No TRRRT16 is controlled via a wireless RF Controller or Bluetooth kit.

Q: What connectors do I need to use?

A: TRRRT_SC series splice connectors can be used at custom-cut connections. Otherwise, reels have 5-pin male and female ends to connect together built into every reel. Be advised that -WET reels require -WET connectors.

Q: How does the TRRRT16 series LED Ribbon Tape connect with the driver?

A: The driver connects to the RF controller via a barrel connector, and the controller connects to the ribbon tape via a 5-pin connector.

Q: Can I use the TRRRT16 series LED Ribbon Tape outside?

A: Only the IP65 rated TRRRT16 '-WET' series Ribbon Tape is IP65 (outdoor rated). The standard TRRRT16 is IP20 (indoor rated). However, the driver and RF receiver must be stored inside a weatherproof box.

Q: Which mounting channels work with the TRRRT16 series LED Ribbon Tape?

A: All aluminum and plastic mounting channels are compatible.

Q: Can I link multiple TRRRT16 kits to run off a single RF Remote?

A: Yes, the RF remote is capable of controlling multiple kits. Programming details can be found in kit's instruction sheet.

FAQ CSRT 24V DC SERIES

Q: How many feet of tape can you put on one driver?

A: The distance can vary depending on the model. See our driver/distance chart.

	CSRT30 JB	CSRT60 JB	CSRT96 JB	CSRT200 JB
Standard*	20'	40'	65'	135'
High Lumen*	10'	20'	32'	65'

*Distances are based on maximum driver load, not maximum tape runs. Values are approximate.

Q: How many feet can I do per run?

A: Due to voltage drop across the length of low-voltage tape, you can only run 50' of standard-lumen CSRT or 35' of the high-lumen CSRT per individual run of tape. A large driver can power multiple runs of tape at these lengths. See our driver/distance chart above.

	STANDARD LUMEN	HIGH LUMEN
Minimum Cut Length	4"	2"
Max Run Length	50'	35'

Q: Is the CSRT series LED Ribbon Tape compatible with a wall dimmer?

A: Yes, when using our CSRTJB junction box LED driver which is compatible with most PWM, MLV, ELV, TRIAC, and 0-10V dimmers. You can also use our TLVC60W-24 Dimmer/Driver All-in-One.

Q: What connectors do I need to use?

A: For Tape to Wire Connections, use TLTB-TW-1. For Tape to Tape Connections, use TLTB-TT-1. For Tape to Tape Connections, use: TLTB-TT-1 or CSRT_IC.

Q: Can I use the CSRT series LED Ribbon Tape outside?

A: No, the CSRT series is IP20 (indoor use only) rated.

Q: What is the difference between the standard lumen and high lumen variants?

A: High lumen is nearly 2x the lumen output of the standard tape. Refer to the CSRT section (Page 14 & 15) for a complete breakdown of Lumen outputs.

Q: Is the CSRT series LED Ribbon Tape available as a kit?

A: No; the CSRT series tape and accessories are designed to provide maximum customization to your customer. Individual components can be purchased for stock, or custom cuts can be ordered from the factory.

Q: Which mounting channels work with the CSRT series LED Ribbon Tape?

A: All aluminum and plastic mounting channels are compatible.

FAQ TRRRT & TRRRL 120V AC SERIES

Q: How many feet of tape can you put on one driver?

A: The maximum run distance for the TRRRT-120V is 164FT. For TRRRL-120V, the maximum run distance is 150FT.

Q: Is the 120v series LED Tape Light dimmable?

A: Both TRRRT-120V and TRRRL-120V plug directly into a 2-prong receptacle. They are not dimmable. However, the TRRRT-120V-__FT-RGB version includes a wireless controller, which allows for brightness adjustment. The TRRRL-120V does not.

Q: How do I connect the 120V series reels? Can I cut these to custom sizes?

A: The 120V reels have built-in twist-lock connectors on each end, allowing the reels to connect end to end. They are not designed to be cuttable.

Q: How does the 120V series LED Tape connect with the driver?

A: The driver connects to the tape via a twist-lock connector.

Q: Can I use the 120V series LED Tape outside?

A: Yes, the 120V LED Tape is IP65 rated.

Q: Which mounting channels work with the 120V series LED Tape?

A: Both 120V LED Tape and Rope lights come with mounting clips*. However, we offer a rigid channel for the TRRRT-120V. The part number is TRRRT-120V-6FTPVC.

*Number of Clips per kit are based on the length of the kit. Please see the chart below for details:

Number of Clips	TRRRT-120V LENGTHS			TRRRL-120V LENGTHS		
	13FT	49FT	164FT	12FT	48FT	150FT
10	x			x		
16		x			x	
50			x			x

Q: Can I link multiple 120V RBG kits to run off a single Remote?

A: Yes, the remote is capable of controlling multiple kits. Programming details can be found in kit's instruction sheet.

A DIVISION OF TAMCO

TAMLITE LIGHTING

TAMLITE
LIGHTING

tamliteusa.com

11675 Tom Mackie Blvd.
Port St. Lucie, FL 34987
P. 772.878.4944

Tamlite Lighting products are available
exclusively at City Electric Supply.

Printed in **USA**

